

INSTALLATION GUIDE



5914-F10

Billet Engine Mount Adapter Set 1967-1969 Camaro, 1968-1974 Nova



Description:

Motor mount adapters for use with stock subframes of 1968-1969 Camaros and 1968-1974 Novas. Enables direct bolt-on installation of Chassisworks billet motor mounts (6007-X, 6055-X) with stock subframes. Complimentary part to 300-3302 & 6073 transmission crossmember adapters. Adapters and hardware included.

PARTS LIST

Qty	Part Number	Description
1	300-330X	Chassis engine adapters F10 for billet side mounts
1pr	3046	Side motor mount spuds .50 x 2.77 for 2 mounts (optional)

You will also have one of the billet engine mount sets below:

1pr	6007-0	Billet mount bare machine finish LS-1 Chevy V8 fits LS-1 thru LS-4 & others
1pr	6007-1	Billet mount satin anodized LS-1 Chevy V8 fits LS-1 thru LS-4 & others
1pr	6007-2	Billet mount polished LS-1 Chevy V8 fits LS-1 thru LS-4 & others
1pr	6055-0	Billet mounts bare machine finish V8 Chevy fits all small & big block Chevy engines
1pr	6055-1	Billet mounts satin anodized V8 Chevy fits all small & big block Chevy engines
1pr	6055-2	Billet mounts polished V8 Chevy fits all small & big block Chevy engines

300-3301 - Engine-Mount Adapters, Small Block

Qty	Part Number	Description
1	5377	Motor mount adapter, driver side with round mounting hole, small block
1	5378	Motor mount adapter, passenger side with slotted mounting hole, small block
1	7952-5914F10	Hardware bag 5914-F10 billet engine mount chassis adapters

300-3303 - Engine-Mount Adapters, Big Block

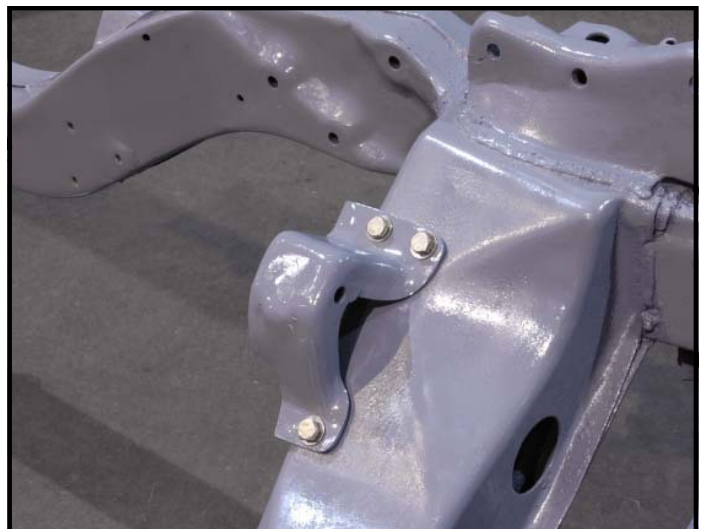
Qty	Part Number	Description
1	5379	Motor mount adapter, driver side with round mounting hole, big block
1	5380	Motor mount adapter, passenger side with slotted mounting hole, big block
1	7952-5914F10	Hardware bag 5914-F10 billet engine mount chassis adapters

7952-5914F10 - Hardware Bag

6	3101-038-16C	Locknut 3/8-16 nylon insert
6	3103-038C1.25C	Socket head 3/8-16 x 1-1/4" cap screw
12	3157-038S-C	Washer flat 3/8" SAE plated

INSTRUCTIONS

1. Unbolt the stock motor-mount stand from the driver side. The nuts can be accessed with a deep well socket and extension from the bottom side of the subframe crossmember.



2. The new billet motor mount adapters will use the factory holes in the subframe. The driver-side adapter has the round hole for the billet mount. The passenger side adapter has a slotted hole.

Big-block frame adapters:

The driver-side adapter is the taller of the two, and offsets the motor toward the passenger side of the vehicle.



3. Bolt the driver side billet motor plate adapter to the subframe with the 3/8-16 x 1-1/4" socket-head cap screws, flat washers and locknuts supplied. Place a flat washer under the head of the cap screw and before the locknut. Tighten all fasteners and torque to 25 lb-ft.



4. Repeat this procedure for the passenger side.



5. Once the billet motor mounts are attached to the engine they will slide into the adapters and be secured with the 1/2" hardware included with the mounts. Shown is the LS style billet mount.



The combination of the 5914-F10 and 300-3302 will allow the LSX engines to be installed in the OEM subframe.

WARRANTY NOTICE:

There are NO WARRANTIES, either expressed or implied. Neither the seller nor manufacturer will be liable for any loss, damage or injury, direct or indirect, arising from the use or inability to determine the appropriate use of any products. Before any attempt at installation, all drawings and/or instruction sheets should be completely reviewed to determine the suitability of the product for its intended use. In this connection, the user assumes all responsibility and risk. We reserve the right to change specification without notice. Further, Chris Alston's Chassisworks, Inc., makes **NO GUARANTEE** in reference to any specific class legality of any component. **ALL PRODUCTS ARE INTENDED FOR RACING AND OFF-ROAD USE AND MAY NOT BE LEGALLY USED ON THE HIGHWAY.** The products offered for sale are true race-car components and, in all cases, require some fabrication skill. **NO PRODUCT OR SERVICE IS DESIGNED OR INTENDED TO PREVENT INJURY OR DEATH.**

Chris Alston's Chassisworks
8661 Younger Creek Drive
Sacramento, CA 95828
Phone: 916-388-0288
Technical Support:tech@cachassisworks.com

