

67'-69' Camaro Pro-Touring Rear Frame



4x2" Canted 4-Link Rear Frame System for 1967-69 Camaro and Firebird

B-Pillar Back System Shown

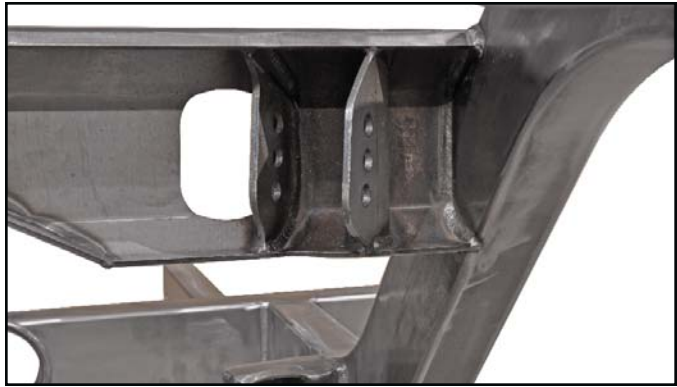


Chassisworks' canted 4-bar Camaro rear frame system is a truly versatile high-performance suspension solution, suitable for high-power, big-tire, pro-touring projects that require more strength and stiffness than systems mounted to the OEM sheet metal can provide. Achieving a very low rocker height of 4" with massive rear tires was one of the system goals. We are proud to state that nearly all of the normally 'one off' chassis and sheet metal fabrication that is required to tuck extremely large tires, drivetrain, and exhaust into your Camaro is expertly built into a neatly packaged 'off the shelf' system. To ensure perfect geometry and fit with minimal effort while saving considerable installation time, rear frames including front crossmember ship as a factory-welded subassembly with unattached 2 x 2" trunk outriggers and 3 x 2" front subframe connectors for easier installation. The 4 x 2 x .120"-wall rear frame is designed with minimal rise over the rearend housing and maximum clearance above the driveshaft and third-member to allow more room in the rear seat and trunk areas without sacrificing suspension travel.

Features/Benefits:

- Fits 345/30-20 rear tires (13.5" section width) (28.2" overall diameter)
- Highly adjustable triangulated 4-link rear suspension
- 4 x 2 x .120"-wall boxed tubing frame rails stronger than OEM
- Supported trunk floor for NoFab battery mount and fuel tank
- Ships as factory-welded assembly
- Complete line of NoFab accessory components to complete build

Multiple mounting points for each of the suspension components, including shocks, control arms, and anti-roll bar, enable highly adjustable suspension geometry that can be fine-tuned to match the performance requirements and weight distribution of your specific vehicle. Suspension component options include tubular-steel or billet-aluminum suspension links with pivot-ball ends, factory-welded FAB9™ housing, ball-end anti-roll bar, and VariShock coil-over or air-spring shocks.



3-Position Upper Control Arm Mount



3-Position Upper Shock Mount

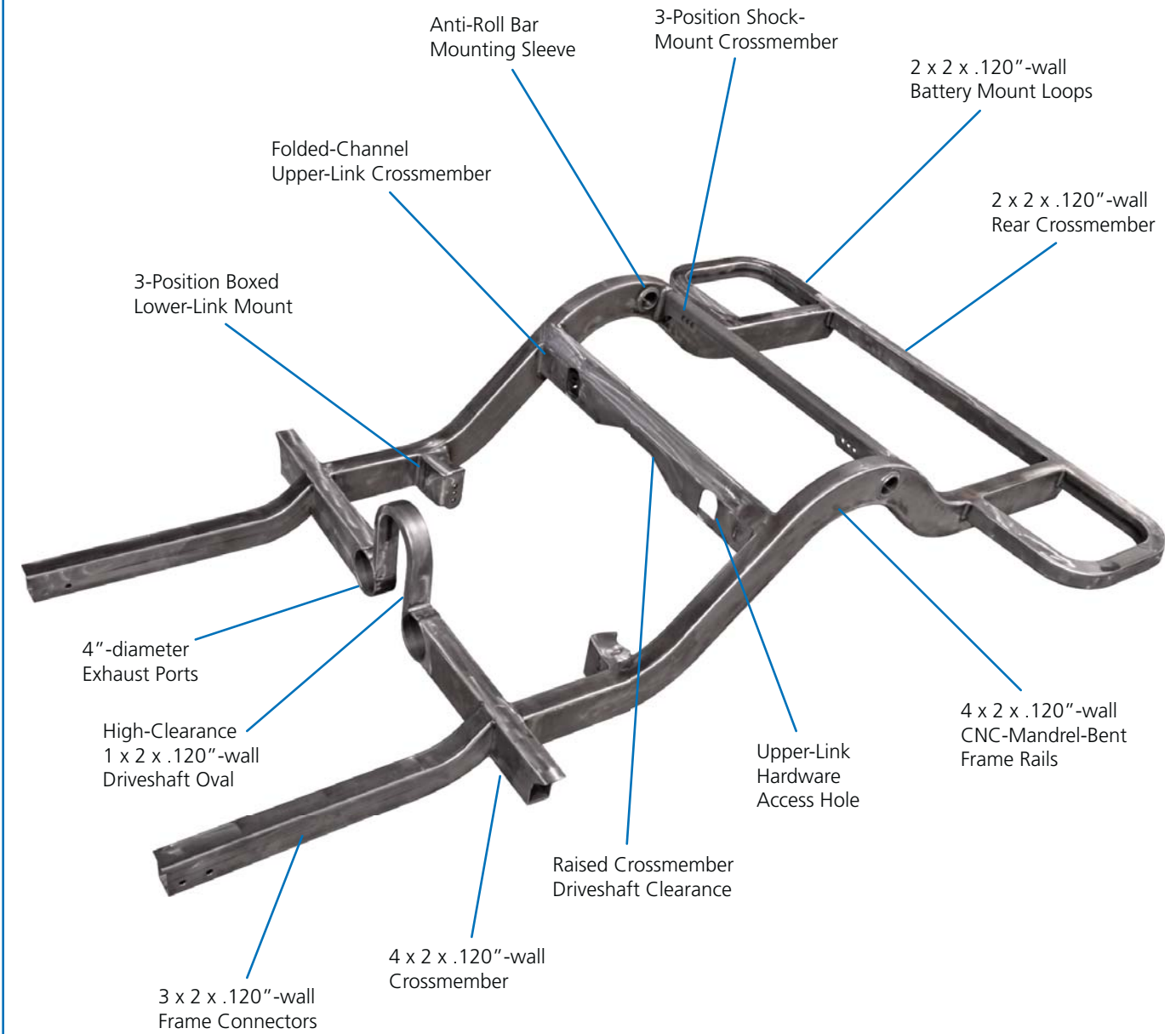


3-Position Lower Control Arm Mount



Frame Manufacturing

All components are professionally spray-arc-welded by Chassisworks' welding staff in a controlled environment using computer-designed fixtures and production-quality equipment.



Tall driveshaft loop allows body to sit lower over the drivetrain without risk of driveshaft contact. Crossmember features factory-welded, dual 4" ID exhaust ports.



Anti-roll bar mounting sleeves are welded into the frame rail positioning the bar close to the undercarriage and clear of suspension and exhaust.

Rear Suspension Package Options

Suspension Link Options:

- g-Link Control Arms - tubular steel with pivot-ball ends
- Billet g-Link Arms - billet aluminum with pivot-ball ends

VariShock Shock Absorber Options:

- 4-Way Adjustable Remote Reservoir Shocks
- Double-Adjustable Coil-Over Shocks
- VariSpring coil springs with choice of rate
- Double-Adjustable Air-Spring Shocks

Anti-Roll Bar:

- Ball-End Anti-Roll Bar with Billet Aluminum Arms



All prices subject to change. Current pricing available at www.cachassisworks.com.



Chris Alston's Chassisworks, Inc.
8661 Younger Creek Drive
Sacramento, CA 95828

Order: 800-722-2269
Tech: 916-388-0288
Fax: 916-388-0295

sales@cachassisworks.com
www.cachassisworks.com