

**Air-Spring 4-Link**



**Air-Bag 4-Link**



**Coil-Over 4-Link**

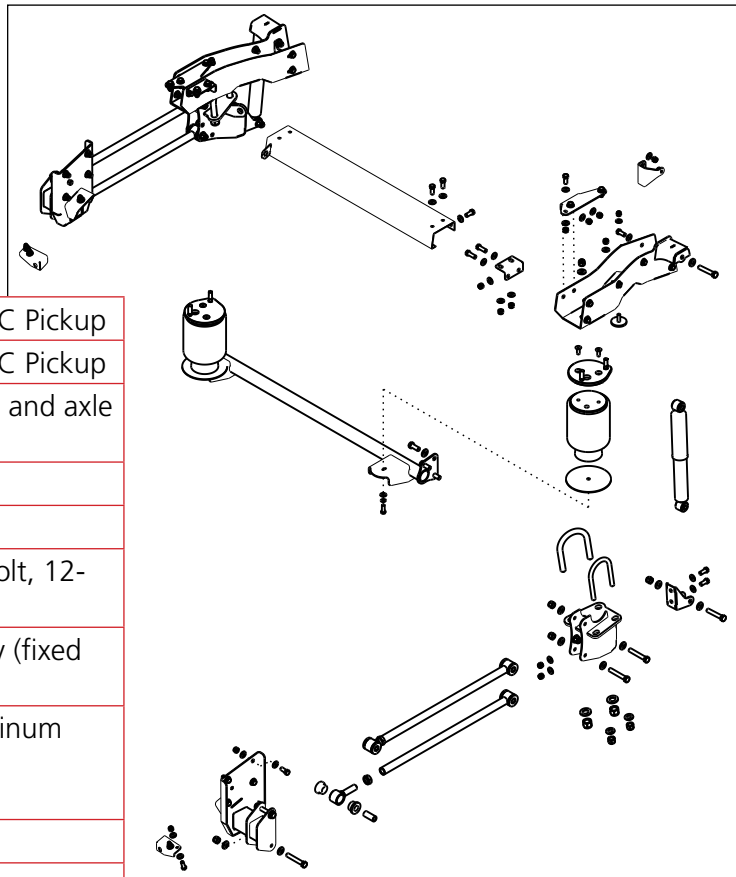
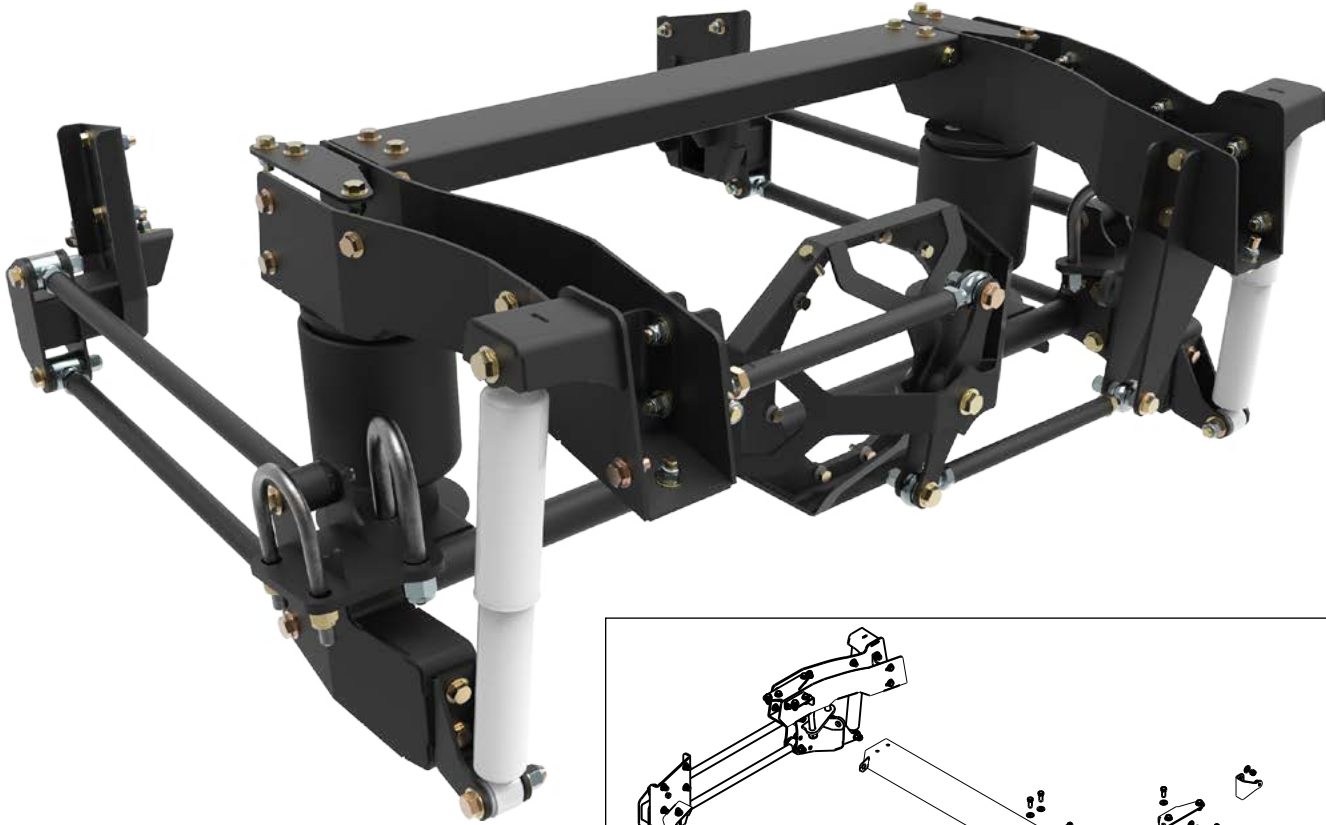


### **4-Link Suspensions for 1963-87 Chevy C10**

KP Components' newest group of parallel 4-link suspensions improve the handling and stance of your Chevy C10 or GMC pickup with the choice of three different spring configurations to best suit your project. Performance focused builds may opt for VariShock coil-overs, whereas those wanting a bit more style can select air bags or even air-spring shocks for the best of both worlds. All three suspensions are available with a panhard bar or watts link locator for use with GM 10- or 12-bolt, or Ford 9-inch rear ends. With the exception of trimming for the recessed notch integrated into the frame brackets, installation is an extremely simple bolt-on process. Four-link and frame rail brackets are positioned using existing chassis features and secure with included Grade 8 mounting hardware. Pricing, options, additional image and instructions for system and components are available online.

# Air-Bag 4-Link Suspension

- 100-percent bolt-on installaiton
- 6" of suspension travel
- 3" to 4" drop from ride height
- Urethane suspension bushings
- Recessed frame notch



<b>KPC 4LAB-C31</b>	1963-72 Chevy C10 and GMC Pickup
<b>KPC 4LAB-C51</b>	1973-87 Chevy C10 and GMC Pickup
<b>INCLUDES</b>	4-link bars and bolt-on frame and axle housing brackets
<b>OPTIONS</b>	
LOCATERS	Panhard Bar Locater Watts Link Locater (GM 10-bolt, 12-bolt, or Ford 9-inch)
SHOCKS	OEM-Style Shocks, Steel Body (fixed valve)
	VariShock Bolt-In, Billet-Aluminum Body (fixed, single or double adjustable)
AIR BAGS	Air Bags - 5" tapered sleeve
<b>NOTES</b>	Suspension links and welded assemblies are with bare metal finish
	Mounting hardware and rod ends are generally zinc plated

## Locater Options

A parallel 4-link requires an additional link or mechanism to restrict side-to-side movement of the rear end housing in relation to the chassis.

### Panhard Bar - (Single Link)

- Travels in large arch  
(rear end shift slightly as suspension moves)
- Works with all common rear end housings

### Watts Link - (Multiple Links)

- Travel in straight line  
(rear end remains centered at all times)
- Center pivot mount is housing specific  
(10-bolt, 12-bolt, Ford 9-inch)



## Shock Options

From double-adjustables, with the ability to tune the suspension for ride-quality and improved performance, to basic OEM-style replacements, KP offers multiple shock options to better suit your sport truck goals.

**Adjustable VariShocks** - Each clearly marked adjustment knob enables sixteen positive-click settings for bump and rebound separately (double-adjustable) or overall stiffness (single-adjustable).

<b>VAS 12222-615</b>	Double-adjustable, billet-aluminum VariShock
<b>VAS 12122-615</b>	Single-adjustable, billet-aluminum VariShock
<b>VAS 12022-615</b>	Factory-valved, billet-aluminum VariShock
<b>KPC SANS-UF</b>	Non-adjustable, steel-body OEM-style shock



## Air Bags

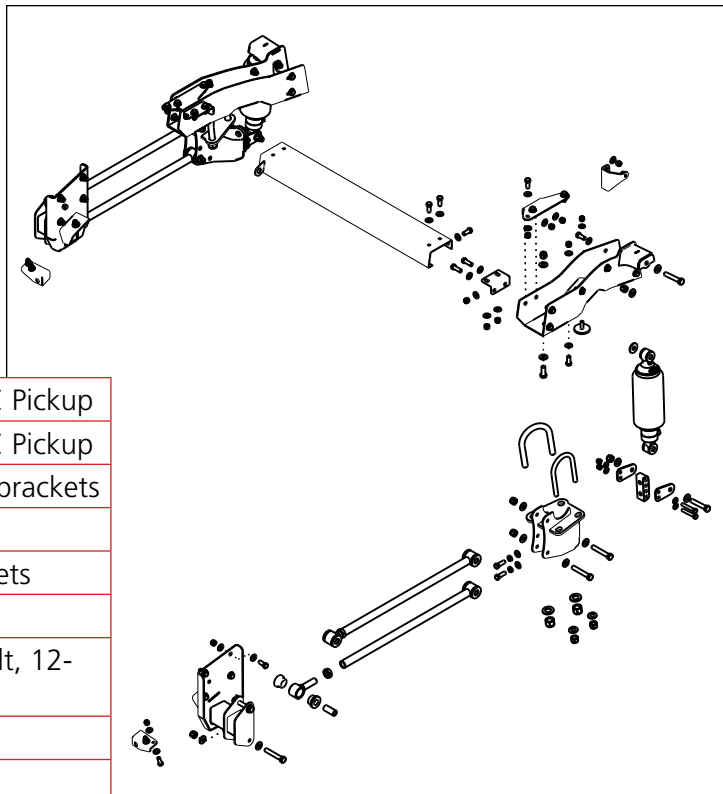
- 5" tapered sleeve
- Internal bumpstops
- 4.3" min. collapsed height
- 12" max. height
- Rated @ 150psi
- 8" to 9-1/2" ride height
- 1/4" NPT port
- Zinc plated steel threaded inserts
- 3/8"-16 mounting holes -  
(2) top plate, (1) bottom plate

**3471-W217609000** Tapered-sleeve 5" diameter air bag (each)



# Air-Spring 4-Link Suspension

- 100-percent bolt-on installaiton
- 5" of suspension travel
- 2" to 3" drop from ride height
- Adjustable ride height
- Adjustable shock valving
- Urethane suspension bushings
- Recessed frame notch



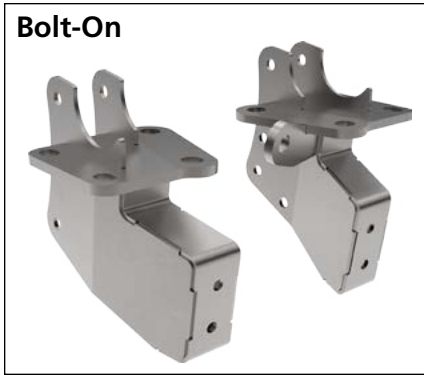
<b>KPC 4LAS-C31</b>	1963-72 Chevy C10 and GMC Pickup
<b>KPC 4LAS-C51</b>	1973-87 Chevy C10 and GMC Pickup
<b>INCLUDES</b>	4-link bars and bolt-on frame brackets
<b>OPTIONS</b>	
AXLE MOUNT	Bolt-on or Weld-on axle brackets
LOCATERS	Panhard Bar Locater
	Watts Link Locater (GM 10-bolt, 12-bolt, or Ford 9-inch)
SHOCKS	Single-adjustable, QuickSet 1
	Double-adjustable, QuickSet 1
<b>NOTES</b>	Suspension links and welded assemblies are with bare metal finish
	Mounting hardware and rod ends are generally zinc plated

## Axle Housing Brackets

### Bolt-On Brackets

- GM 10- or 12-bolt housing
- Fixed-position shock mount

### Bolt-On



### Weld-On



### Weld-On Brackets

- Fits all rear end housings
- Adjustable-height shock mount

## Locater Options

A parallel 4-link requires an additional link or mechanism to restrict side-to-side movement of the rear end housing in relation to the chassis.

### Panhard Bar - (Single Link)

- Travels in large arch  
(rear end shift slightly as suspension moves)
- Works with all common rear end housings

### Watts Link - (Multiple Links)

- Travel in straight line  
(rear end remains centered at all times)
- Center pivot mount is housing specific  
(10-bolt, 12-bolt, Ford 9-inch)



## Air-Spring Shock Options

Adjustable VariShocks provide the ability to tune the suspension for ride-quality and improved performance. Each clearly marked adjustment knob enables sixteen positive-click settings for bump and rebound separately (double-adjustable) or overall stiffness (single-adjustable).

### Dual Poly-Eye, 4" Sleeve with Cap Port

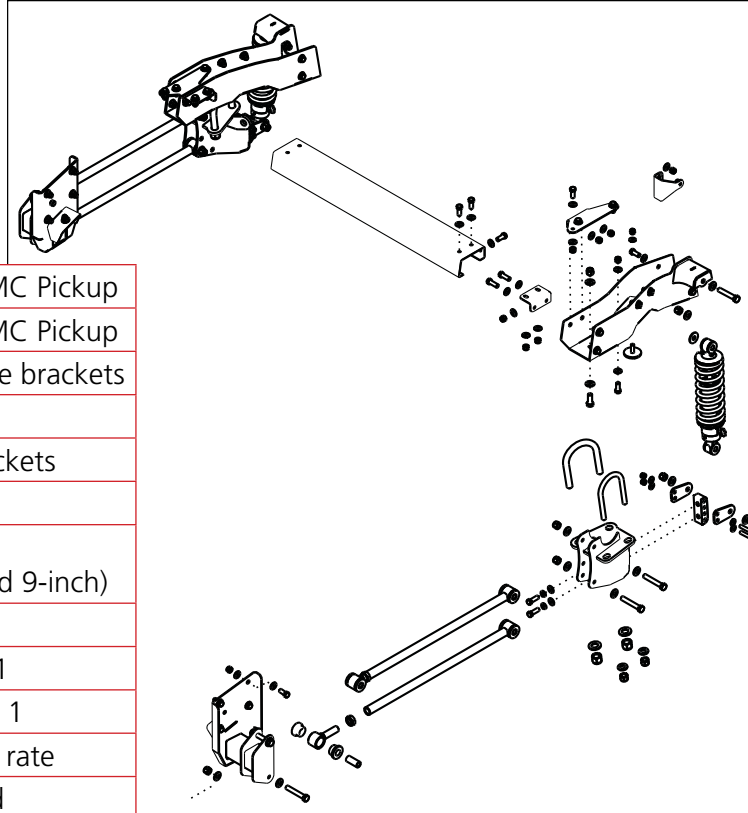
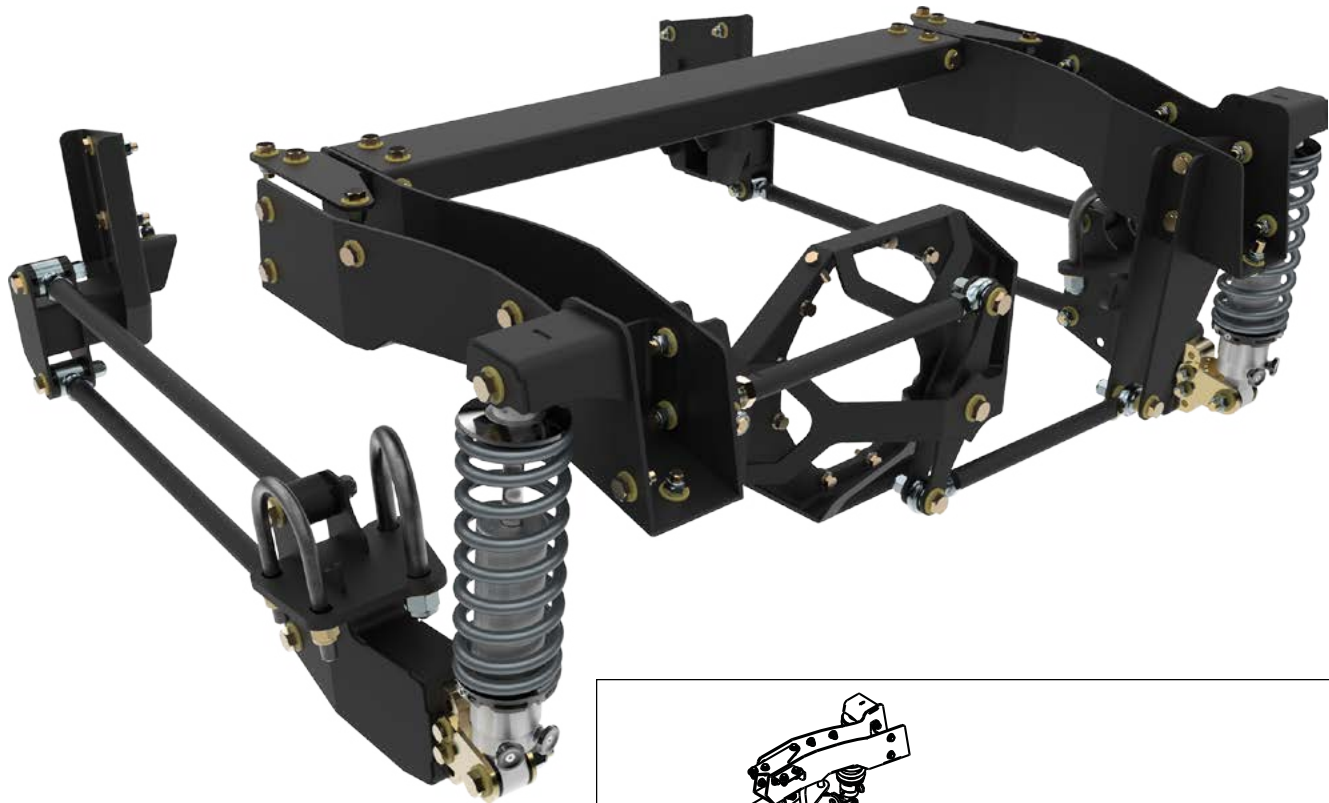
- Poly-urethane eyes, 5/8" sleeve with 1/2" hardware with 1-1/4" clevis
- Light- to medium-duty service only.  
*Not suitable for towing.*



Item	Valve	Adjustment	Travel	Collapsed	Extended	Min. Ride	Max. Ride
<b>VAS 132K2-515</b>	Double	Bump and rebound	5.00"	11.56"	16.56"	12.56"	15.56"
<b>VAS 131K2-515</b>	Single	Overall stiffness	5.00"	11.56"	16.56"	12.56"	15.56"

# Coil-Over 4-Link Suspension

- Enhanced performance handling
- 100-percent bolt-on installation
- 5" of suspension travel
- Adjustable ride height
- Adjustable shock valving
- Urethane suspension bushings
- Recessed frame notch



<b>KPC 4LCO-C31</b>	1963-72 Chevy C10 and GMC Pickup
<b>KPC 4LCO-C51</b>	1973-87 Chevy C10 and GMC Pickup
<b>INCLUDES</b>	4-link bars and bolt-on frame brackets
<b>OPTIONS</b>	
AXLE MOUNT	Bolt-on or Weld-on axle brackets
LOCATERS	Panhard Bar Locater
	Watts Link Locater (GM 10-bolt, 12-bolt, or Ford 9-inch)
SHOCKS	Factory-valved, SensiSet
	Single-adjustable, QuickSet 1
	Double-adjustable, QuickSet 1
SPRINGS	175, 200 or 250 lb/in spring rate
<b>NOTES</b>	Suspension links and welded assemblies are with bare metal finish
	Mounting hardware and rod ends are generally zinc plated

## Axle Housing Brackets

### Bolt-On Brackets

- GM 10- or 12-bolt housing
- Fixed-position shock mount

### Bolt-On



### Weld-On



### Weld-On Brackets

- Fits all rear end housings
- Adjustable-height shock mount

## Locater Options

A parallel 4-link requires an additional link or mechanism to restrict side-to-side movement of the rear end housing in relation to the chassis.

### Panhard Bar - (Single Link)

- Travels in large arch  
(rear end shift slightly as suspension moves)
- Works with all common rear end housings

### Watts Link - (Multiple Links)

- Travel in straight line  
(rear end remains centered at all times)
- Center pivot mount is housing specific  
(10-bolt, 12-bolt, Ford 9-inch)



## Shock Options

VariShock Coil-Overs add a level of performance above our air-based systems. A predictable, linear spring rate matched with wide range of valve adjustment (excludes factory-valved), lets you tune for ride quality as well as handling.

**Adjustable VariShocks** - Each clearly marked adjustment knob enables sixteen positive-click settings for bump and rebound separately (double-adjustable) or overall stiffness (single-adjustable).



<b>VAS 11222-515</b>	Double-adjustable (bump/rebound)
<b>VAS 11122-515</b>	Single-adjustable (overall stiffness)
<b>VAS 11022-515</b>	Factory-valved (fixed valve set)
<b>VAS 21-12175</b>	175 lb/in coil spring (light)
<b>VAS 21-12200</b>	200 lb/in coil spring (baseline)
<b>VAS 21-12250</b>	250 lb/in coil spring (heavy)

**NOTES:**

All prices subject to change. Current pricing available at [www.KPcomponents.com](http://www.KPcomponents.com).

**KP COMPONENTS**  
A Chris Alston's Chassisworks, Inc. Brand

KP Components  
8661 Younger Creek Drive  
Sacramento, CA 95828

Order: 866-575-4657  
Tech: 916-388-0289  
Fax: 916-388-0290

[KPcomponents@cachassisworks.com](mailto:KPcomponents@cachassisworks.com)  
[www.KPcomponents.com](http://www.KPcomponents.com)