

**Drag Race 11-3/4" Unvented Rotor with
Forged-Aluminum Four-Piston Caliper**

Slotted rotor shown.

Available with smooth-surface, non-slotted rotors.

Front Disc Brakes - Drag Race

Chassisworks' designed and manufactured front drag-race-application disc brake kits feature fixed, four-piston, forged-aluminum Wilwood calipers and lightweight, 11-3/4 x .35", solid or slotted, plain-finish rotors with billet aluminum one-piece hat and hub. The bolt-together hat/hub-rotor assembly allows worn or damaged components to be replaced easily and economically. Our enhanced-friction ceramic-formula brake pads provide smooth engagement with consistent response from a flat torque curve throughout their entire effective temperature range. The kit is designed for use with g-Machine fabricated or sculpted spindles and requires 15" or larger wheels. Performance applications should be limited to drag race vehicles under 3,200 lb. A parachute is also required on any vehicle exceeding 150 mph.

Forged Dynalite Caliper

Wilwood's Forged Dynalite (FDL) four-piston, aluminum, lug-mount caliper is used for its light weight (4.06 lb), superior rigidity, and enhanced braking performance and pedal feel. The calipers use a closed-end, internal fluid passage design that is further strengthened by four steel bridge bolts extending through the caliper body. Stress flow forging and smooth surface transitions help eliminate stress points and reduce overall caliper deflection.



FDL calipers use one-piece, 1.75"-diameter, stainless-steel pistons and high-temperature, square-faced bore seals. Stainless steel slows heat transfer to the brake fluid and improves the system's resistance to heat-induced pedal fade. This reduction in heat also increases the service life of the fluid and seals. The four individual pistons apply pressure against both sides of the rotor. Caliper fluid requirements are matched to the output capabilities of commonly used factory master cylinders, ensuring comfortable performance in a wide range of applications.

The Dynalite calipers are trouble-free and service-friendly. Vibration-dampening stainless-steel bridge-plate inserts protect the caliper body from wear caused by pad movement, greatly extending service life. Two-piece bleed screws are easily accessed at each corner of the caliper body and eliminate direct wear to the aluminum body. Brake pads are also easily changed by simply removing the retaining pin and sliding the pads out.

Lightweight Performance Rotors

The kit comes standard with plain-finish, unvented rotors constructed from a special alloy steel chosen for its high thermal stability and resistance to distortion. These lightweight performance rotors are designed specifically for drag racing applications under 3,200 lb. Rotors measure 11.75 x .35" and weigh in at a mere 5.82 lb or less. Standard smooth-surface (solid) rotors provide greater stopping power and increased heat absorption. For reduced weight (5.02 lb) and more eye-catching performance, rotors can be upgraded to a slotted version.

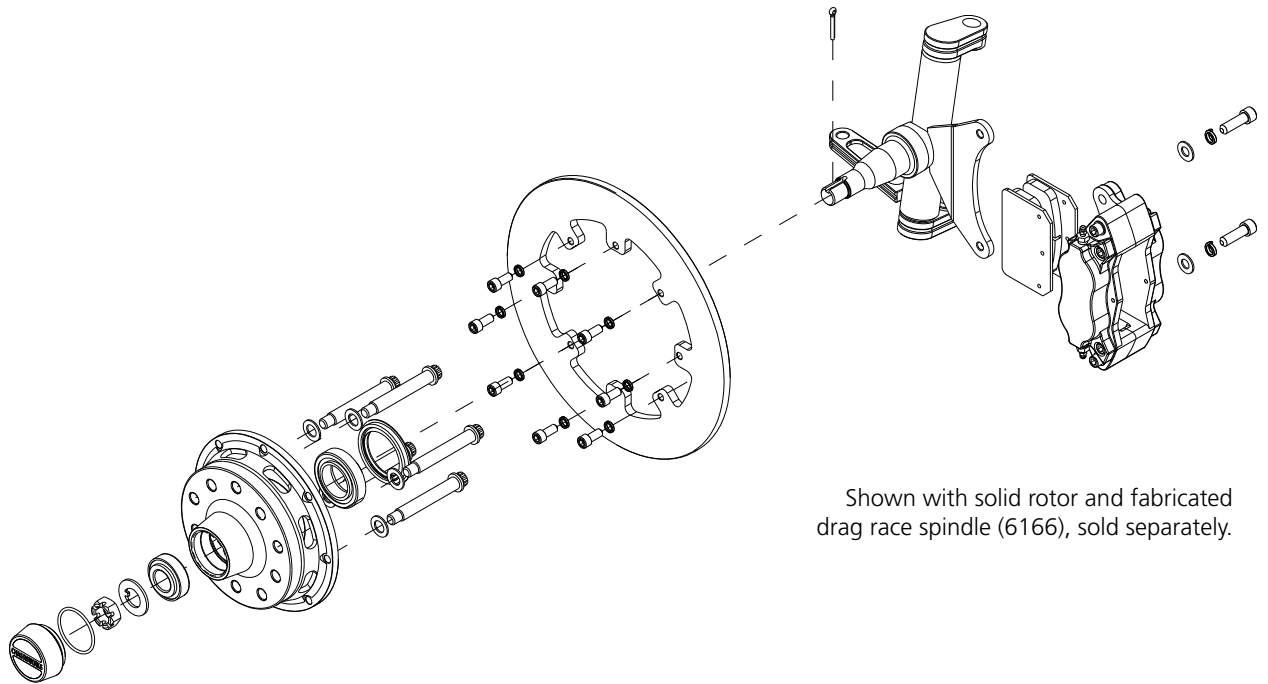


Billet Aluminum Hat and Hub

One-piece billet aluminum hat and hub use a slotted-wall design that bolts to the rotor to reduce unnecessary weight and allow components to be easily replaced if damaged or worn. Rotors and hubs are secured by 5/16" socket-head bolts in an eight-bolt configuration. Hubs and matching screw-on, O-ringed caps are machine- and anodize-finished to prevent oxidation and resist scratching. Hubs are drilled and tapped for both 4-1/2" and 4-3/4" five-lug bolt patterns and include 1/2" x 3", twelve-point wheel studs. Wheel bearings and seals also included.



Exploded Diagram



Shown with solid rotor and fabricated drag race spindle (6166), sold separately.

Specifications

Caliper	Rotor	Hub/Hat
Model: Wilwood Dynalite Material: Forged Aluminum Pistons: 4 (1.75" Stainless Steel) Weight: 3.90 lb each Finish: Matte Black	Size: 11.75 x 0.35" Type: Unvented Weight: Solid 5.82 lb, Slotted 5.02 lb each Finish: Uncoated	Material: 6061-T65 Aluminum Bolt Patterns: 5 on 4-1/2" and 5 on 4-3/4" Weight: 9.40 lb each (with bearings and hardware) Finish: Clear Anodized
Complete Kit Weight: Solid Rotor 20.03 lb, Slotted Rotor 19.23 lb each side		

Pricing and Options

Part Number	Description	Price
8336	11-3/4" Drag Front Disc Brakes for g-Machine System, solid rotors, matte-black loaded calipers	\$689 ⁰⁰
OPTIONS	Lightweight Slotted Rotors	50 ⁰⁰
	Polished Calipers	105 ⁰⁰
WW 150-8850K	Replacement Pad Set, Street-Strip Standard, BP-10 Compound, 100-1000 F°	41 ⁶⁰

Notes:

All prices subject to change. Current pricing available at www.cachassisworks.com.



Chris Alston's Chassisworks, Inc.
8661 Younger Creek Drive
Sacramento, CA 95828

Order: 800-722-2269
Tech: 916-388-0288
Fax: 916-388-0295

sales@cachassisworks.com
www.cachassisworks.com