

**Bolt-In Mid Plates for
1962-72 Chevy II/Nova and 1967-69 Camaro**

Features & Benefits:

- Improves acceleration response and torque capacity
- Direct bolt-on installation
- Sturdy, .134"-thick, zinc-plated steel
- Precision CNC-laser-cut features
- Versions for automatic transmissions and clutch-equipped vehicles with Lakewood scattershield

Chevy II mid plate (6058) shown installed on g-Machine lower subframe (7700); subframe sold separately.

Bolt-In Mid Plates (Optional)

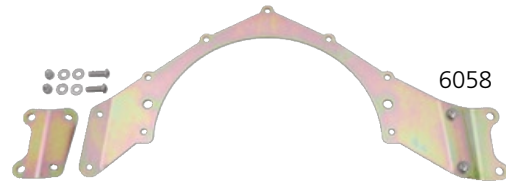
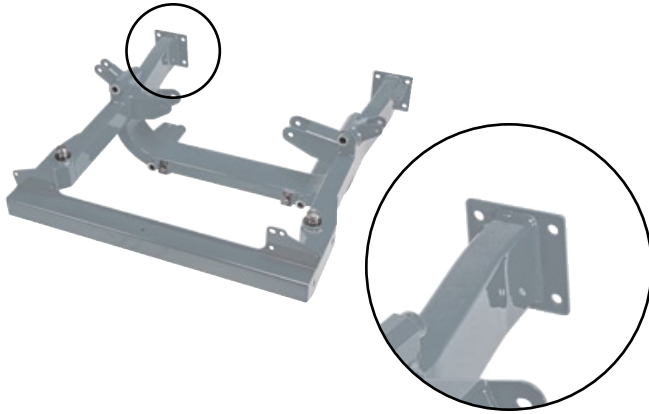
Recommended for moderate- to high-horsepower applications, mid plates easily bolt to g-Machine-subframe-equipped 1967-69 Camaro/Firebirds and 1968-72 Novas, with optional brackets, and stock or g-Machine-equipped 1962-67 Chevy II/Novas. Once installed, our unique Chevy II adapter system enables mid-plate removal without disassembling the main subframe joint. By directly coupling the rear block face to the chassis, acceleration response and torque capacity are greatly increased without over-stressing the sidewalls of the engine block. When used with our optional motor plate, the mid plate also improves chassis rigidity by utilizing the engine block as a stress member. Mid plates are CNC-laser-cut, .134"-thick, zinc-plated steel with no trimming or notching required for installation. Driver-side mounting holes positively locate the engine, while passenger-side slots facilitate installations with minor chassis variances. Hardware required to mount mid plate to frame-adapter brackets is included.

Note: Chevy II mid plates mount to inner holes of factory main subframe joint. Kits include frame-adapter brackets, enabling the mid plate to be removed and reinstalled without disrupting the main subframe joint.

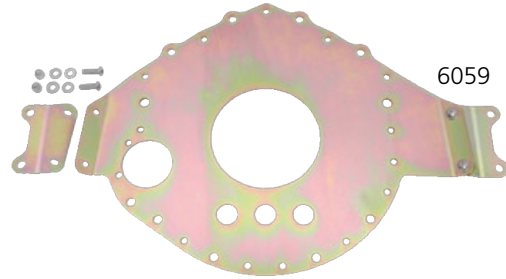
Note: Camaro g-Machine subframe installation requires selection of optional mid-plate brackets at time of subframe purchase.

Chevy II Mid Plates

1962-67 Chevy II g-Machine or OEM subframe



6058



6059

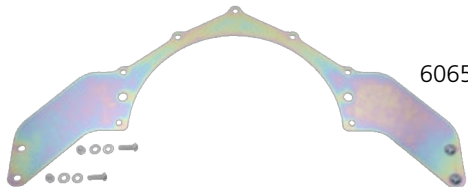
Part Number	Description	Price
6058	Bolt-In Mid Plate, Automatic, Chevy II '62-67 (OEM or g-Machine subframe)	\$98 ⁰⁰
6059	Bolt-In Mid Plate, Lakewood, Chevy II '62-67 (OEM or g-Machine subframe)	139 ⁰⁰

Camaro/Nova Mid Plates

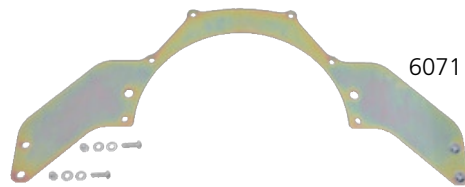
1967-69 Camaro

1968-72 Nova

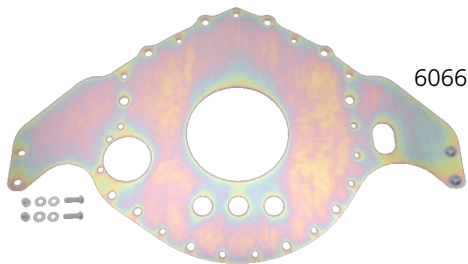
g-Machine subframe only



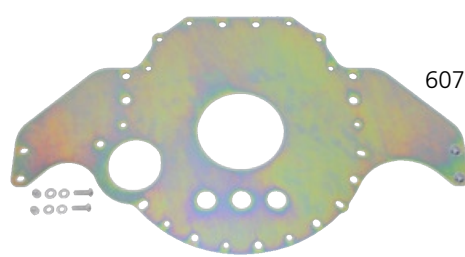
6065



6071



6066



6072

Part Number	Description	Price
6065	Bolt-In Mid Plate, Automatic, Camaro '67-69, Nova '68-72 (g-Machine subframe only)	\$98 ⁰⁰
6066	Bolt-In Mid Plate, Lakewood, Camaro '67-69, Nova '68-72 (g-Machine subframe only)	139 ⁰⁰
6071	Bolt-In Mid Plate, Automatic, Firebird '67-69 (g-Machine subframe only, Pontiac V8)	159 ⁰⁰
6072	Bolt-In Mid Plate, Lakewood, Firebird '67-69 (g-Machine subframe only, Pontiac V8)	199 ⁰⁰

All prices subject to change. Current pricing available at www.cachassisworks.com.



Chris Alston's Chassisworks, Inc.
8661 Younger Creek Drive
Sacramento, CA 95828

Order: 800-722-2269
Tech: 916-388-0288
Fax: 916-388-0295

sales@cachassisworks.com
www.cachassisworks.com