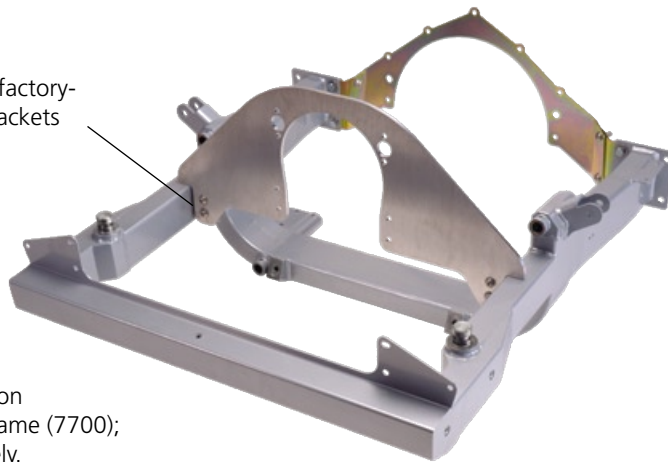


**Bolt-In Motor Plates for 1962-72 Chevy II/Nova
and 1967-69 Camaro/Firebird (g-Machine only)**



Mounts to factory-
installed brackets



Chevy II motor plate
6056) shown installed on
g-Machine lower subframe (7700);
subframe sold separately.

Features & Benefits:

- Improves acceleration response and torque capacity
- Direct bolt-on installation
- Lightweight, .250"-thick, 6061-T6 aluminum
- Precision CNC-profile-machined features

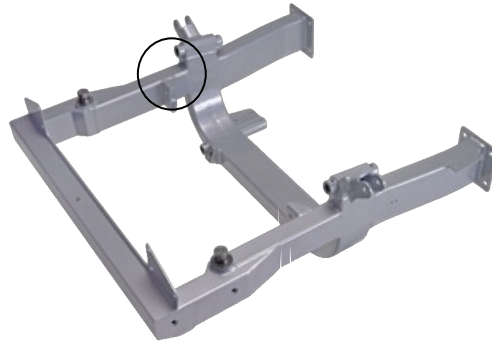
Bolt-In Motor Plates (Optional)

Recommended for high-horsepower applications, small- or big-block Chevy V8 motor plates bolt onto optionally installed Camaro or Chevy II g-Machine subframe brackets to position the engine in the factory location and provide additional clearance directly underneath the exhaust ports. Motor plates are .250"-thick 6061-T6 aluminum and feature CNC-profile-machined mounting holes, water passages, and outside edges with no trimming or notching required. Driver-side mounting holes positively locate the engine, while passenger-side slots facilitate installation with minor chassis variances. By directly coupling the front block face to the chassis, acceleration response and torque capacity are greatly increased without overstressing the sidewalls of the engine block. When used with our optional mid plate, the motor plate also improves chassis rigidity by utilizing the engine block as a stress member. Motor plates are .250"-thick, profile-milled, 6061-T6 aluminum and ship with mounting hardware.

Chevy II Motor Plates

1962-67 Chevy II g-Machine subframe

Motor-plate brackets are factory fixture-welded during subframe assembly, ensuring consistent and accurate engine placement.



6056



6057

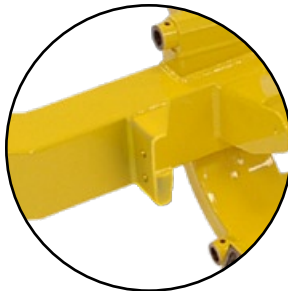
Part Number	Description	Price
6056	Bolt-In Motor Plate, Small-Block V8, '62-67 Chevy II	\$179.00
6057	Bolt-In Motor Plate, Big-Block V8, '62-67 Chevy II	179.00

Camaro/Nova Motor Plates

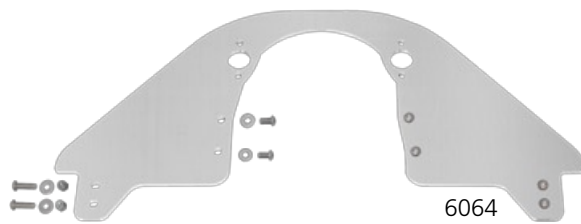
1967-69 Camaro

1968-72 Nova

g-Machine subframe



6063



6064

Part Number	Description	Price
6063	Bolt-In Motor Plate, Small-Block V8, '67-69 Camaro, '68-72 Nova	\$179.00
6064	Bolt-In Motor Plate, Big-Block V8, '67-69 Camaro, '68-72 Nova	179.00

All prices subject to change. Current pricing available at www.cachassisworks.com.



Chris Alston's Chassisworks, Inc.
8661 Younger Creek Drive
Sacramento, CA 95828

Order: 800-722-2269
Tech: 916-388-0288
Fax: 916-388-0295

sales@cachassisworks.com
www.cachassisworks.com