

VariShock Bolt-In Application Chart

[CLICK for More Info Online](#)

Part Number Explanation: To indicate shock style, replace the "X" in the part number with "0" for SensiSet (SS), "1" for QuickSet 1 (QS1), or "2" for QuickSet 2 (QS2). Consult the sales technician for applications not shown.

| BUICK | Front | Rear |
|--------------|---------------|---------------|
| Apollo | | |
| 73-75 | VAS 14X45-425 | VAS 14X69-715 |
| Regal | | |
| 73-87 | VAS 14X45-425 | VAS 14X69-715 |
| Skylark | | |
| 64-67 | VAS 14X45-515 | VAS 14X69-715 |
| 68-79 | VAS 14X45-425 | VAS 14X69-715 |

| CHEVROLET | Front | Rear |
|------------------|---------------|---------------|
| Bel Air | | |
| 53-54 | - | VAS 14X49-825 |
| 55-57 | VAS 14X45-515 | VAS 14X49-825 |
| 58-64 | VAS BIH20-FX | VAS BIH20-RX |
| 65-81 | VAS 14X45-515 | VAS 14X69-715 |
| Camaro | | |
| 67-69 | VAS 14X45-425 | VAS 14X49-715 |
| 70-81 | VAS 14X45-515 | VAS 14X64-715 |
| 82-02 | See Struts | VAS 14X49-715 |

| | | |
|----------|---------------|---------------|
| Chevelle | | |
| 64-67 | VAS 14X45-515 | VAS 14X69-715 |
| 68-77 | VAS 14X45-425 | VAS 14X69-715 |
| Corvette | | |
| 53-62 | - | VAS 14X49-715 |
| 63-82 | VAS 14X45-515 | VAS 14X28-425 |
| 84-87 | VAS 14X46-515 | VAS 14X28-425 |
| 89-96 | VAS 14X46-515 | VAS 14X46-515 |
| 97-04 | VAS 14X46-615 | VAS 14X4C-515 |

| | | |
|-------------|---------------|---------------|
| Impala | | |
| 58-64 | VAS BIH20-FX | VAS BIH20-RX |
| 65-85 | VAS 14X45-515 | VAS 14X69-715 |
| Monte Carlo | | |
| 70-88 | VAS 14X45-425 | VAS 14X69-715 |

| | | |
|---------------------|---------------|---------------|
| Nova | | |
| 68-79 | VAS 14X45-425 | VAS 14X69-715 |
| Nova, Chevy II | | |
| 62-67 | VAS 14X47-615 | VAS 14X49-715 |
| Pickup C-10, C-1500 | | |
| 50-55 | - | VAS 14X49-825 |
| 55-59 | VAS 14X88-715 | - |
| 63-66 | VAS 14X88-425 | VAS 14X88-715 |
| 67-72, Rear coil | VAS 14X88-425 | VAS 14X22-615 |
| 67-72, Rear Leaf | VAS 14X88-425 | VAS 14X88-715 |
| 73-86 | VAS 14X88-425 | VAS 14X88-825 |
| 87-99 | VAS 14X45-515 | - |

| | | |
|-------------------|---------------|---|
| Pickup S-10, 2 WD | | |
| 82-93 | VAS 14X45-425 | - |
| 94-01 | VAS 14X45-425 | - |

| DODGE | Front | Rear |
|----------------------|---------------|---------------|
| Challenger | | |
| 70-74 | VAS 14X45-615 | VAS 14X88-825 |
| Charger | | |
| 66-72 | VAS 14X45-615 | VAS 14X88-825 |
| 73-76 | - | VAS 14X88-825 |
| Coronet | | |
| 55-61 | - | VAS 14X88-825 |
| 66-72 | VAS 14X45-615 | VAS 14X88-825 |
| 73-76 | - | VAS 14X88-825 |
| Dart, Demon, Swinger | | |
| 60-61 | - | VAS 14X88-825 |
| 62-76 | VAS 14X45-615 | VAS 14X88-825 |
| Pickup Dakota 2 WD | | |
| 87-01 | VAS 14X45-425 | - |

| FORD/MERCURY | Front | Rear |
|------------------------|---------------|---------------|
| Cyclone | | |
| 64-67 | VAS 14X45-515 | VAS 14X49-825 |
| 68-71 | VAS 14X47-515 | VAS 14X44-715 |
| Fairlane, Fairlane 500 | | |
| 57-58 | VAS 14X45-515 | VAS 14X44-715 |
| 59-62 | VAS 14X45-515 | - |
| 62-65 | - | VAS 14X44-715 |
| 66-70 | VAS 14X47-515 | VAS 14X44-715 |

| | | |
|--------------------|---------------|---------------|
| Falcon, Comet | | |
| 60-70 | VAS 14X47-515 | VAS 14X44-715 |
| Maverick, Comet | | |
| 69-77 | VAS 14X67-425 | VAS 14X49-715 |
| Mustang & Cougar | | |
| 65-70 | VAS 14X67-425 | VAS 14X44-715 |
| 71-73 | VAS 14X47-425 | VAS 14X44-715 |
| 74-78 Mustang only | VAS 14X45-425 | VAS 14X45-615 |
| 79-04 | See Struts | VAS 14X49-825 |

| | | |
|-----------------|---------------|---------------|
| Torino, Montego | | |
| 68-71 | VAS 14X47-515 | VAS 14X44-715 |
| 72-76 | VAS 14X45-515 | VAS 14X49-715 |

| | | |
|--------------|---------------|---------------|
| Pickup F-150 | | |
| 48-52 | VAS 14X88-715 | - |
| 55 | - | VAS 14X88-715 |
| 56-60 | - | VAS 14X49-715 |
| 61-64 | - | VAS 14X88-715 |
| 80-96 | VAS 14X45-515 | - |
| 97-01 | VAS 14X45-615 | - |

| OLDSMOBILE | Front | Rear |
|---------------------------|---------------|---------------|
| Cutlass & Cutlass Supreme | | |
| 64-67 | VAS 14X45-515 | VAS 14X69-715 |
| 68-88 | VAS 14X45-425 | VAS 14X69-715 |
| Omega | | |
| 73-79 | VAS 14X45-425 | VAS 14X69-715 |

| PLYMOUTH | Front | Rear |
|-----------------------|---------------|---------------|
| Barracuda | | |
| 64-69 | VAS 14X45-615 | VAS 14X88-825 |
| 70-74 | VAS 14X45-615 | VAS 14X88-825 |
| Belvedere & Satellite | | |
| 55-61 | - | VAS 14X88-825 |
| 62-72 | VAS 14X45-615 | VAS 14X88-825 |
| 73-74 | - | VAS 14X88-825 |

| | | |
|------------------------|---------------|---------------|
| Duster, Scamp, Vallant | | |
| 60-76 | VAS 14X45-615 | VAS 14X88-825 |
| Fury | | |
| 59-61 | - | VAS 14X88-825 |
| 62-64 | VAS 14X45-615 | VAS 14X88-825 |
| 65-70 | - | VAS 14X88-825 |
| 75-76 | - | VAS 14X88-825 |

| | | |
|-----------|---|---------------|
| Fury Gran | | |
| 74-77 | - | VAS 14X88-825 |

| PONTIAC | Front | Rear |
|----------------|---------------|---------------|
| Firebird | | |
| 67-69 | VAS 14X45-425 | VAS 14X49-715 |
| 70-81 | VAS 14X45-515 | VAS 14X64-715 |
| 82-02 | - | VAS 14X49-715 |

| | | |
|------------|---------------|---------------|
| Grand Prix | | |
| 65-68 | VAS 14X45-515 | - |
| 69-87 | VAS 14X45-425 | VAS 14X69-715 |
| GTO | | |
| 64-67 | VAS 14X45-515 | VAS 14X69-715 |
| 68-74 | VAS 14X45-425 | VAS 14X69-715 |

| | | |
|-----------------|---------------|---------------|
| LeMans, Tempest | | |
| 64-67 | VAS 14X45-515 | VAS 14X69-715 |
| 68-83 | VAS 14X45-425 | VAS 14X69-715 |

| | | |
|---------------------|---------------|---------------|
| Ventura, Ventura II | | |
| 71-72 | VAS 14X45-425 | VAS 14X69-715 |

NOTE: Due to deviations in ride height, you must verify that the application chart suggested shock will actually fit your vehicle. Consult the dimensional chart on page 4 to determine that the selected shocks compressed length, extended length, and upper and lower mounts are correct for your vehicle.

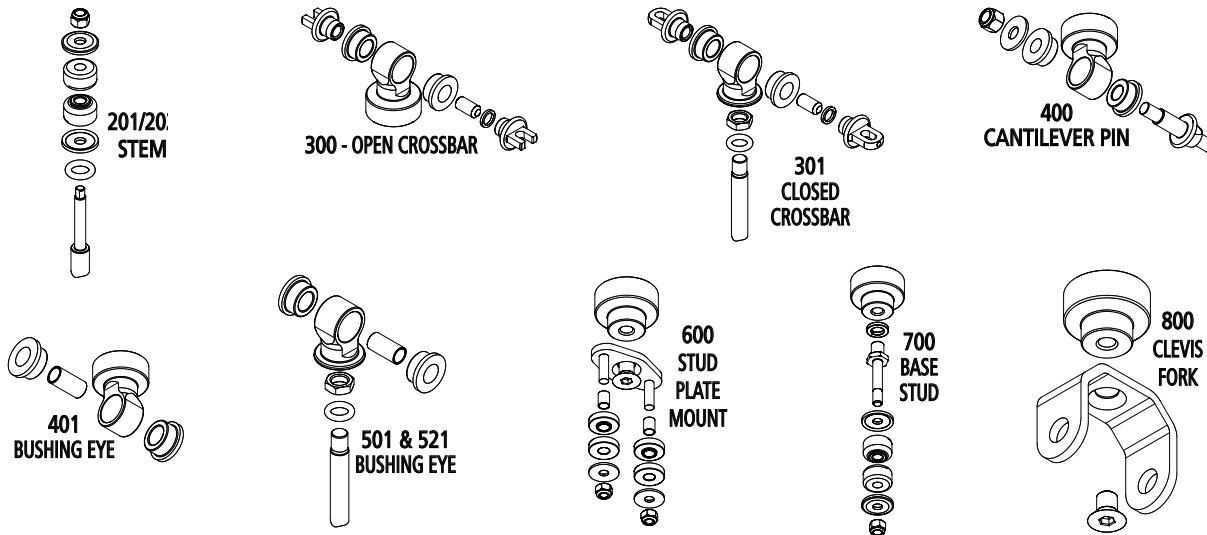
VariShock Bolt-In Size Chart

[CLICK for More Info Online](#)

| SensiSet (SS) | QuickSet 1 (QS1) | QuickSet 2 (QS2) | Ride Height | Compressed Length | Extended Length | Shock Travel | Upper Mount Type | Mount Code | Lower Mount Type | Mount Code |
|---------------|------------------|------------------|-------------|-------------------|-----------------|--------------|------------------|------------|------------------------------|------------|
| VAS 14022-615 | VAS 14122-615 | VAS 14222-615 | 15.02 | 11.94 | 18.09 | 6.15 | Eye 7/16 to 1/2 | 501 | Eye 7/16 to 1/2 | 501 |
| VAS 14028-425 | VAS 14128-425 | VAS 14228-425 | 12.17 | 10.04 | 14.29 | 4.25 | Eye 7/16 to 1/2 | 501 | Eye 1/2 to 11/16 | 521 |
| VAS 14044-715 | VAS 14144-715 | VAS 14244-715 | 14.40 | 10.83 | 17.98 | 7.15 | Stem 3/8 | 201 | Stem 3/8 | 700 |
| VAS 14045-425 | VAS 14145-425 | VAS 14245-425 | 10.43 | 8.30 | 12.55 | 4.25 | Stem 3/8 | 201 | Crossbar open | 300 |
| VAS 14045-515 | VAS 14145-515 | VAS 14245-515 | 11.78 | 9.20 | 14.35 | 5.15 | Stem 3/8 | 201 | Crossbar open | 300 |
| VAS 14045-615 | VAS 14145-615 | VAS 14245-615 | 13.28 | 10.20 | 16.35 | 6.15 | Stem 3/8 | 201 | Crossbar open | 300 |
| VAS 14046-515 | VAS 14146-515 | VAS 14246-515 | 11.78 | 9.20 | 14.35 | 5.15 | Stem 3/8 | 201 | Crossbar closed | 301 |
| VAS 14046-615 | VAS 14146-615 | VAS 14246-615 | 13.28 | 10.20 | 16.35 | 6.15 | Stem 3/8 | 201 | Crossbar closed | 301 |
| VAS 14047-425 | VAS 14147-425 | VAS 14247-425 | 9.96 | 7.84 | 12.09 | 4.25 | Stem 3/8 | 201 | Stud plate | 600 |
| VAS 14047-515 | VAS 14147-515 | VAS 14247-515 | 11.31 | 8.74 | 13.89 | 5.15 | Stem 3/8 | 201 | Stud plate | 600 |
| VAS 14047-615 | VAS 14147-615 | VAS 14247-615 | 12.81 | 9.74 | 15.89 | 6.15 | Stem 3/8 | 201 | Stud plate | 600 |
| VAS 14049-715 | VAS 14149-715 | VAS 14249-715 | 14.78 | 11.20 | 18.35 | 7.15 | Stem 3/8 | 201 | Cantilever Pin / Bushing Eye | 400/401 |
| VAS 14049-825 | VAS 14149-825 | VAS 14249-825 | 16.43 | 12.30 | 20.55 | 8.25 | Stem 3/8 | 201 | Cantilever Pin / Bushing Eye | 400/401 |
| VAS 1404C-515 | VAS 1414C-515 | VAS 1424C-515 | 13.06 | 10.49 | 15.64 | 5.15 | Stem 3/8 | 201 | Clevis Fork | 800 |
| VAS 14064-715 | VAS 14164-715 | VAS 14264-715 | 16.14 | 12.57 | 19.72 | 7.15 | Crossbar closed | 301 | Stem 3/8 | 700 |
| VAS 14067-425 | VAS 14167-425 | VAS 14267-425 | 11.70 | 9.58 | 13.83 | 4.25 | Crossbar closed | 301 | Stud plate | 600 |
| VAS 14069-715 | VAS 14169-715 | VAS 14269-715 | 16.52 | 12.94 | 20.09 | 7.15 | Crossbar closed | 301 | Cantilever Pin 1/2 | 400 |
| VAS 14088-425 | VAS 14188-425 | VAS 14288-425 | 12.17 | 10.04 | 14.29 | 4.25 | Eye 1/2 to 11/16 | 521 | Eye 1/2 to 11/16 | 521 |
| VAS 14088-715 | VAS 14188-715 | VAS 14288-715 | 16.52 | 12.94 | 20.09 | 7.15 | Eye 1/2 to 11/16 | 521 | Eye 1/2 to 11/16 | 521 |
| VAS 14088-825 | VAS 14188-825 | VAS 14288-825 | 18.17 | 14.04 | 22.29 | 8.25 | Eye 1/2 to 11/16 | 521 | Eye 1/2 to 11/16 | 521 |

Note: Sold only in pairs

Fitment: Bolt-In front shocks are larger in diameter than the hole in the lower A-arm. The lower A-arm must be disconnected from the spindle to allow installation of the shock into the front coil spring.



Mount Codes: These codes define the style and range of mountings that attach the individual model numbers

| | | | | | |
|-----|--|---------|--|-----|--|
| 201 | Upper 3/8 thread stem x 2-1/8 long | 400/401 | Cantilever pin 1/2 thread with 1-5/16 offset | 521 | 12mm bolt x 1-1/4, 1-1/2, 1-5/8 sleeve width |
| 300 | Open crossbars for 2-1/8 to 2-1/2 bolt centers | | 7/16 bolt x 1-1/4, 1-3/8, 3-3/8 sleeve width | | 1/2 bolt x 1-1/4, 1-3/8, 1-5/8 sleeve width |
| | 7/16 bolt x 1-1/4, 1-3/8, 3-3/8 sleeve width | | 12mm bolt x 1-1/4, 1-1/2, 1-5/8 sleeve width | | 9/16 bolt with 1-5/8 sleeve width |
| | 12mm bolt x 1-1/4, 1-1/2, 1-5/8 sleeve width | | 1/2 bolt x 1-1/4, 1-3/8, 1-5/8 sleeve width | | 5/8 bolt with 1-5/16 sleeve width |
| | 1/2 bolt x 1-1/4, 1-3/8, 1-5/8 sleeve width | 501 | 7/16 bolt x 1-1/4, 1-3/8, 3-3/8 sleeve width | | 11/16 bolt with 1-9/16 sleeve width |
| 301 | Closed crossbars for 2-3/8 to 3" bolt centers | | 12mm bolt x 1-1/4, 1-1/2, 1-5/8 sleeve width | 600 | 5/16 stud plates on 2-1/8 centers |
| | 5/8 bolt x 1-1/4 sleeve width | | 1/2 bolt x 1-1/4, 1-3/8, 1-5/8 sleeve width | 700 | Lower 3/8 thread stem x 2-1/8 long |
| | | | | 800 | Clevis fork with 5/8 bore x 2-3/4 wide |

All prices subject to change. Current pricing available at www.cachassisworks.com.



A Chris Alston's Chassisworks, Inc. Brand

Chris Alston's Chassisworks, Inc.

8661 Younger Creek Dr., Sacramento CA 95828 Tel: 916-388-0288 Fax: 916-388-0295

Toll Free: 800-722-2269 www.varishock.com Email: VariShock@cachassisworks.com