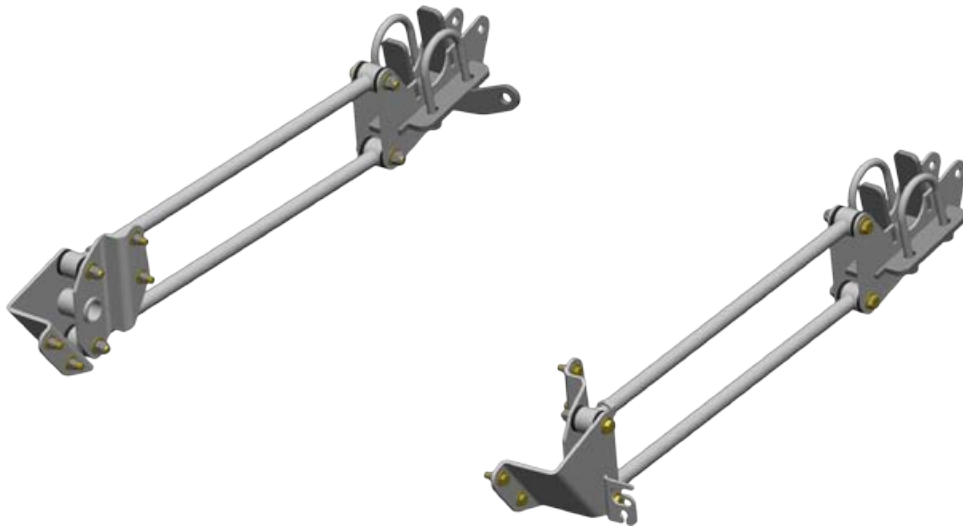


INSTALLATION GUIDE



KPC 4LBO-C61

Bolt-On 4-Link Kit
1988-1998 Chevrolet and GMC 1500 Series Pickup



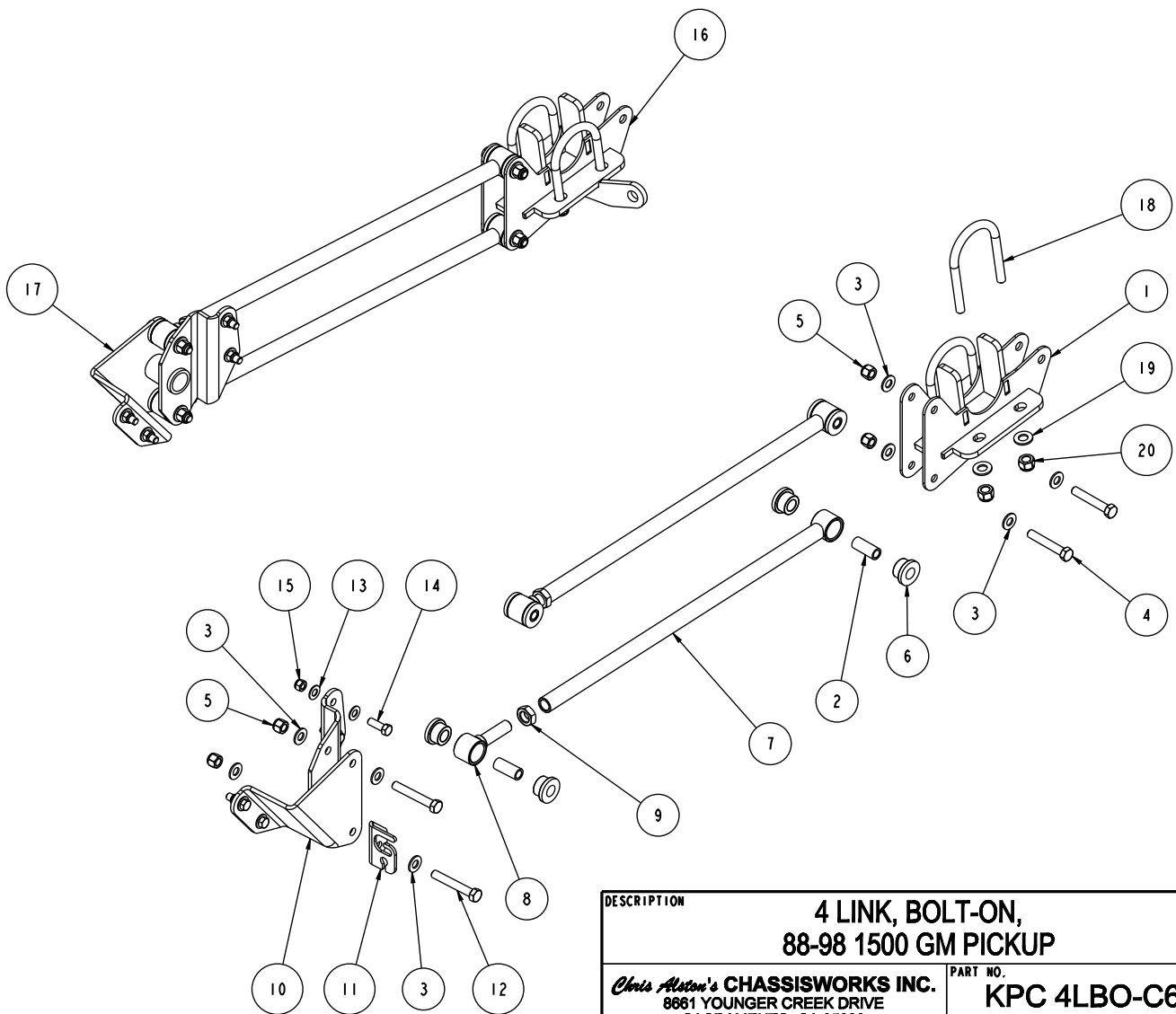
Description:

Bolt-on, urethane-bushed 4-link rear suspension for 1988-1998 Chevrolet and GMC 1500 series pickup. Includes bolt-on frame- and axle-brackets, adjustable-length suspension links, urethane end bushings, and mounting hardware

Note:

Requires additional Panhard bar or Watts link for operation.

ITEM	QTY	PART NO.	DESCRIPTION
1	1	7930-037	AXLE MOUNT WELDMENT, 4-LINK, DRIVER, 88-98 GM PICKUP
2	8	3140-1624-056	SLEEVE, POLY BUSHING, $\varnothing 3/4$ x .50 x 1.750
3	16	3157-050S-C	WASHER, 1/2 SAE, ZINC PLATED, 1/2 ID x 1 1/16 OD x 3/32 THICK
4	4	3100-050C3.00Y	HEX BOLT, 1/2-13 x 3, GRADE 8, YELLOW ZINC
5	8	3101-050-13C	LOCKNUT 1/2-13, GRADE 5, NYLON INSERT, CLEAR ZINC
6	16	3141-2440-0.88	POLYURETHANE BUSHING 1.63 x .750 x .750
7	4	7930-074-26.49	LINK BAR WELDMENT, 26.49 OAL, 3/4-16 x 93°, 1.25 ID POLY
8	4	7930-003	POLY EYE WELDMENT, 3/4-16 x 1 1/4 BORE
9	4	3102-075-16RC	JAM NUT, 3/4-16 RIGHT, CLEAR ZINC
10	1	7930-030	FRAME MOUNT WELDMENT, 4-LINK, DRIVER, 88-98 GM PICKUP
11	1	7930-036	BRACKET #36, RELOCATOR, EMERGENCY BRAKE CABLE
12	4	3100-050C3.25Y	HEX BOLT, 1/2-13 x 3 1/4, GRADE 8, YELLOW ZINC
13	16	3157-044S-C	WASHER, 7/16 SAE, ZINC PLATED, 7/16 ID x 1 1/8 OD x 1/16 THICK
14	8	3100-044C1.25Y	HEX BOLT, 7/16-14 x 1 1/4, GRADE 8, YELLOW ZINC
15	8	3101-044-14C	LOCKNUT 7/16-14, GRADE 5 NYLON INSERT, CLEAR ZINC
16	1	7930-038	AXLE MOUNT WELDMENT, 4-LINK, PASSENGER, 88-98 GM PICKUP
17	1	7930-031	FRAME MOUNT WELDMENT, 4-LINK, PSGR, 88-98 GM PICKUP
18	4	3147-300.56-525	U-BOLT, AXLE TUBE, 9/16-18 x 3.00 x 5.25
19	8	3120-056S-Y	FLAT WASHER, 9/16 SAE, HARDENED
20	8	3131-056-18Y	LOCKNUT, 9/16-18, GRADE 8, NYLON INSERT, YELLOW ZINC



DESCRIPTION		4 LINK, BOLT-ON, 88-98 1500 GM PICKUP	
Chris Alston's CHASSISWORKS INC. 8661 YOUNGER CREEK DRIVE SACRAMENTO, CA 95828 (916) 388-0288 FAX 388-0295		PART NO.	KPC 4LBO-C61
		5/27/09	DWG: 7927-4LBO-C61

PARTS LIST

KPC 4LBO-C61 - Bolt-on 4-Link Suspension, '88-98 GM 1500 series

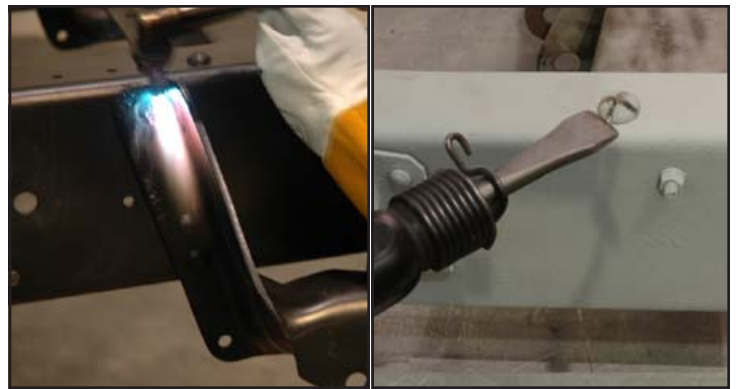
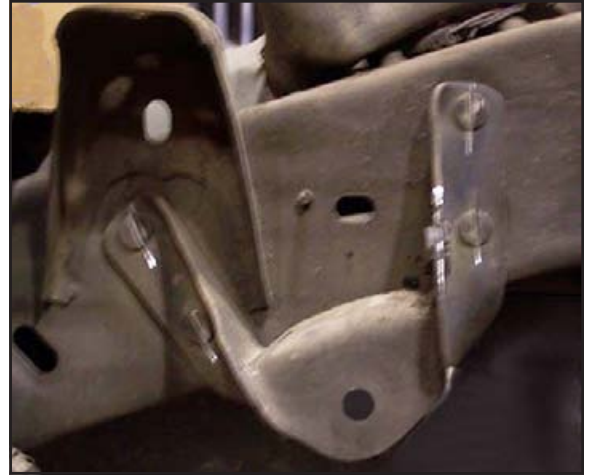
Qty	Part Number	Description
1	7926-4LBOC61	Hardware bag
1	7930-030	4-link frame mount driver side weldment
1	7930-031	4-link frame mount passenger side weldment
1	7930-037	4- link axle mount driver side weldment
1	7930-038	4-link axle mount passenger side weldment with panhard bar tab
4	7930-074-26.49	Link bar weldment 26.49 OAL x 3/4-16 RH

7926-4LBOC61 - Hardware Bag

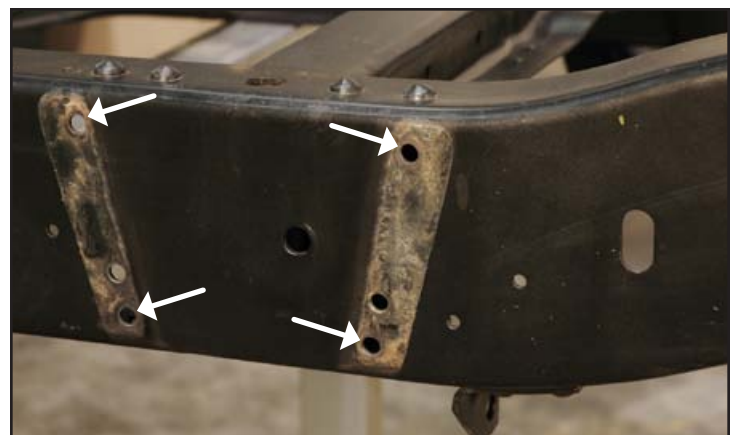
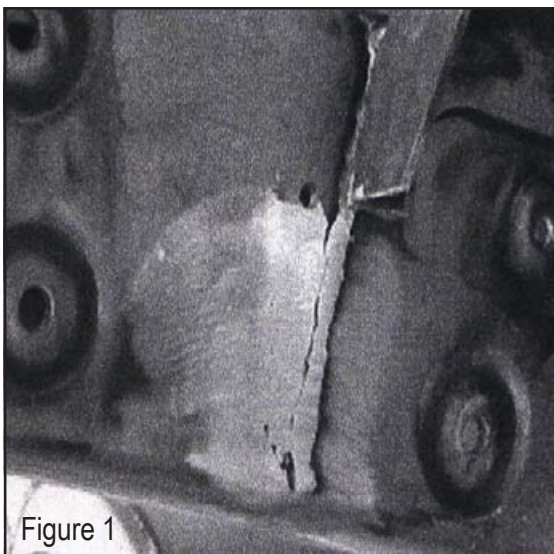
Qty	Part Number	Description
8	3100-044C1.25Y	Bolt 7/16-14 x 1-1/4" hex head cap screw
4	3100-050C3.00Y	Bolt 1/2-13 x 3" hex head cap screw
4	3100-050C3.25Y	Bolt 1/2-13 x 3-1/4" hex head cap screw
8	3101-044-14C	Locknut 7/16-14 nylon insert
8	3101-050-13C	Locknut 1/2-13 nylon insert
4	3102-075-16RC	Jam nut 3/4-16 RH Grade 5, clear zinc
8	3120-056S-Y	Washer 9/16" hardened SAE flat
8	3131-056-18Y	Locknut 9/16-18 nylon insert Grade NE8, yellow zinc
8	3140-1624-056	Sleeve 1/2 ID x 3/4 OD x 1-3/4" long
16	3141-2440-0.88	Poly bushing .75 bore x .875" OAL
4	3147-300.56-525	U-bolt 9/16-18 x 5-1/4" long for 3" round tube
2	3151-1/2OZ	Poly lube 1/2 oz. cup
16	3157-044S-C	Washer 7/16" SAE flat, plated
16	3157-050S-C	Washer 1/2" SAE flat, plated
4	7930-003	Poly eye 3/4-16 RH weldment
1	7930-036	Emergency brake cable relocater

INSTRUCTIONS

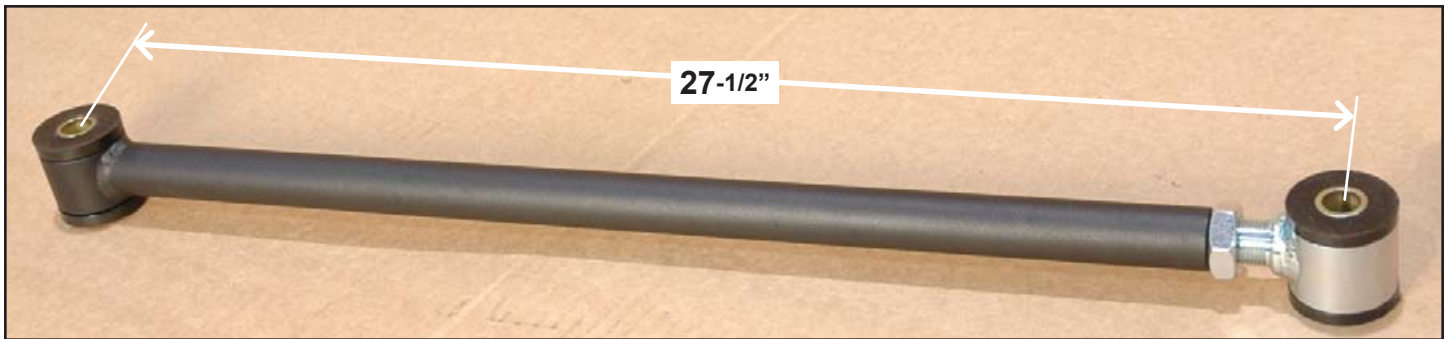
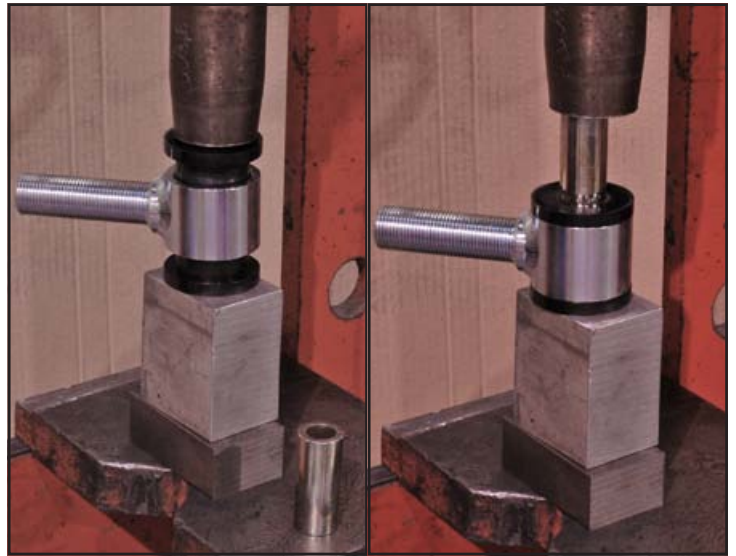
1. Raise the truck and support with jack stands placed under the frame, between the cab and forward leaf-spring mounting brackets. Remove the bed and the rear bumper.
2. Support the axle housing under the frame on jack stands with the suspension hanging, there should be no weight on the leaf springs. Unbolt the leaf springs from the axle housing, remove all stock suspension components.
3. The front leaf-spring mounting brackets must be removed by taking out the factory rivets.
4. Remove each rivet head using a cutting torch or by using a cutoff wheel to grind a deep "X" into the heads of the rivets, and then removing the rivet head with an air chisel.
5. Once the rivet heads are removed, a round-tip air-hammer tool can be used to drive the rivets clear of the bracket and frame.
6. Bolt the driver side front 4-link bracket to the frame using 7/16-14 x 1-1/4" hex bolts, flat washers and locknuts. There should be flat washers under the bolt head and locknut. Torque to 35 lb-ft.



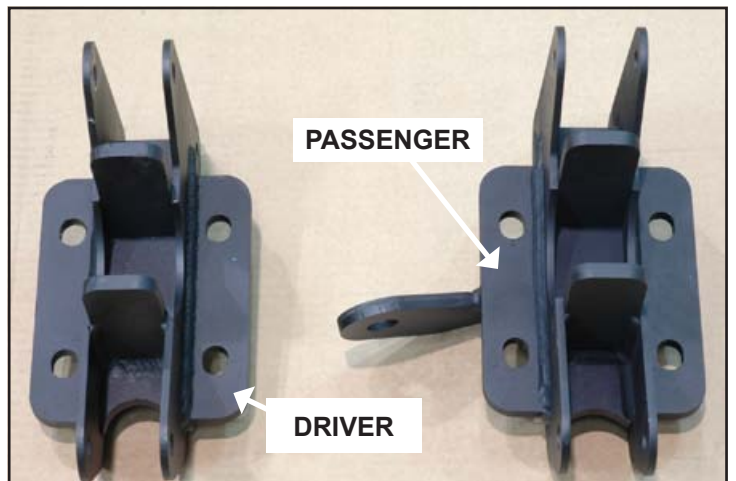
NOTE: On extended cab trucks, the bed bracket must be trimmed slightly. Figure 1.



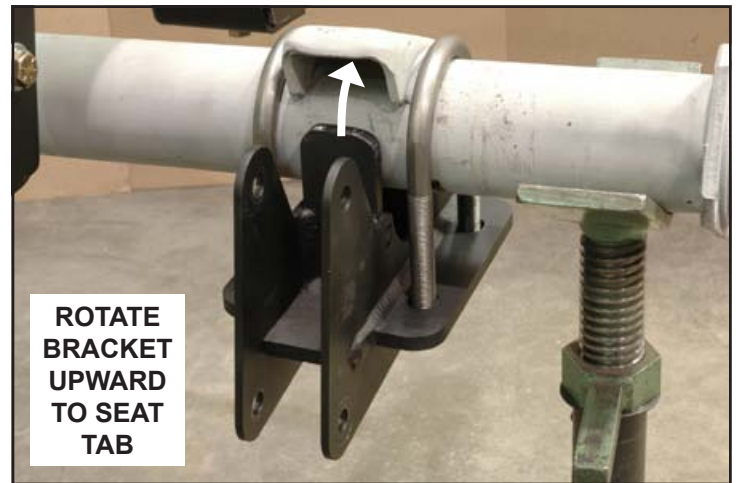
7. Insert two poly bushings into each 4-link eye.
8. Apply poly lube to the inside of the poly bushings and outside of the steel sleeves.
9. Press the steel sleeves into the poly bushings until they are centered.
10. Use a 3/4-16 tap and die to chase the threads of the poly eyes and 4-link bars.
11. Thread the 3/4-16 jam nuts onto the threaded eyes until there are 4-5 threads remaining between the jam nut and the shoulder.
12. Apply a small amount of anti-seize to the male threads and screw it into the link bar until the jam nut contacts the tube.
13. The center-to-center length of the link bar must measure 27-1/2" before installing.



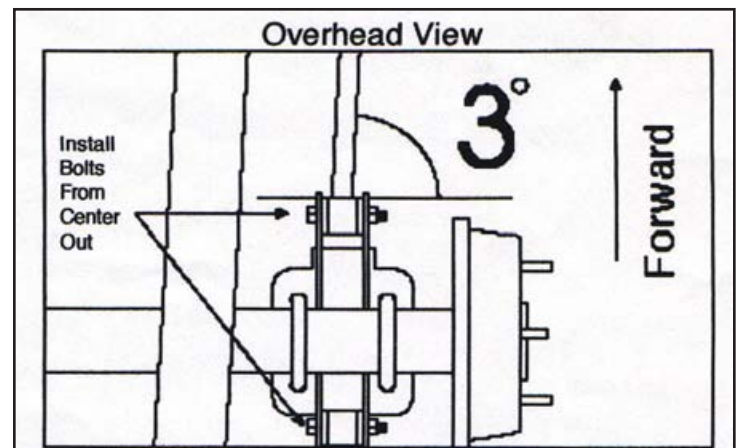
14. These are the 4-link axle brackets. The passenger-side mount has the panhard bar mounting tab.



15. Loosely bolt the 4-link bracket to the axle housing using the U-bolts, hardened washers, and locknuts.
16. Rotate the bracket to seat the large tab at the front of the bracket against the leaf-spring pad.
17. Tighten the U-bolts evenly to 60 lb-ft.



18. Install the 4-link bars with the adjustable eyes closest to the frame brackets.
19. This end of the bar is angled three degrees and must be installed. These four bolts must be installed from the center of the truck out to avoid hitting the frame.
20. The emergency brake cable bracket (7930-036) must be installed with the driver side frame bracket's lower 4-link bar mounting bolts.
21. The 1/2-13 x 3-1/4" hex bolts, flat washers, and locknuts are used on the frame mounts. There should be a flat washer under each bolt head and locknut. Torque to 45 lb-ft.
22. Use the 1/2-13 x 3" hex bolts, flat washers, and locknuts on the housings axle mounts.
23. Repeat procedure for the passenger side of the truck.



NOTES

WARRANTY NOTICE:

There are NO WARRANTIES, either expressed or implied. Neither the seller nor manufacturer will be liable for any loss, damage or injury, direct or indirect, arising from the use or inability to determine the appropriate use of any products. Before any attempt at installation, all drawings and/or instruction sheets should be completely reviewed to determine the suitability of the product for its intended use. In this connection, the user assumes all responsibility and risk. We reserve the right to change specification without notice. Further, Chris Alston's Chassisworks, Inc., makes **NO GUARANTEE** in reference to any specific class legality of any component. **ALL PRODUCTS ARE INTENDED FOR RACING AND OFF-ROAD USE AND MAY NOT BE LEGALLY USED ON THE HIGHWAY.** The products offered for sale are true race-car components and, in all cases, require some fabrication skill. **NO PRODUCT OR SERVICE IS DESIGNED OR INTENDED TO PREVENT INJURY OR DEATH.**

KP Components
A Chris Alston's Chassisworks Inc., Brand
8661 Younger Creek Drive
Sacramento, CA 95828
Technical Support: KPtech@cachassisworks.com

