

## GM Motor Mount and Frame Adapter Set '67-81 F-Body, '68-74 X-Body, and '64-72 A-Body



Optional polished stainless-steel motor mount spud kit (3046).

- Steel or billet-aluminum motor mounts
- Bolt-on steel frame adapters
- Captive urethane bushing design

### Motor Mount and Frame Adapters

Chassisworks motor mount and frame adapter sets enable direct bolt-in installation of Chevrolet's modern LS engines, standard V8 and 4.3L V6, as well as '70-77 Pontiac 5-hole V8 blocks into 1967-81 Camaro/Firebird\* (F-Body), 1968-74 Nova (X-Body), and 1964-72 Chevelle (A-Body) factory frames. CNC-machined, billet-aluminum and welded-assembly steel mounts feature a steel-sleeved, urethane bushing set secured by a 1/2" through-bolt. This captive-bushing design creates an inseparable mount with strength and reliability of a solid mount, but with significantly less vibration.



Correct engine position and drivetrain angle is maintained with either mount set to ensure correct drivetrain geometry and pinion angle. Kits include powder-coated steel frame adapters, complete mounting hardware set, and choice of satin-anodized aluminum or black-powder-coat steel motor mounts.

**Note:** Tubular crossmembers with standard side-mount- or LS-engine specific frame adapters are also available.

\* **1967-81 Firebird:** Pontiac mount option is available for 5-hole blocks produced from 1970 to 1977. Mounts are a billet-steel welded assembly with black powder-coat finish.

## Chevrolet Side Mounts (Small Block, Big Block, 4.3L V6)

The standard Chevrolet three-hole bolt pattern allows installation of small- or big-block V8's, as well as 4.3L V6 engines, with a Pontiac mount option available for 1967-81 Firebirds. Separate frame adapter sets are available for small-block and big-block installations to match the factory engine location. Small-block frame adapters center the engine within the chassis and big-block adapters offset the engine toward the passenger side for adequate clearance around the steering system.



## Chevelle (A-Body) Side Mounts

### 1964-67 Chevelle (A-Body)

5914-A10-V8	1964-67 Chevelle (A-Body) V8-Series Engines
OPTIONS	Billet-aluminum mounts with satin anodized finish
	Welded-assembly steel mounts with black powder-coat finish
	Spud hardware set with polished finish (3046)



### 1968-72 Chevelle (A-Body)

5914-A20-V8	1968-72 Chevelle (A-Body) V8-Series Engines
OPTIONS	Billet-aluminum mounts with satin anodized finish
	Welded-assembly steel mounts with black powder-coat finish
	Spud hardware set with polished finish (3046)



## Camaro (F-Body) Big-Block Side Mounts

### 1967-69 Camaro (F-Body)

Chevrolet V8 Big-Block

5914-F10-BB	1967-69 Camaro/Firebird (F-Body), 1968-74 Nova (X-Body) Big-Block V8 Engines
OPTIONS	Billet-aluminum mounts with satin anodized finish
	Welded-assembly steel mounts with black powder-coat finish
	Spud hardware set with polished finish (3046)



### 1967-81 Camaro and Firebird (F-Body)

Chevrolet V8 Small-Block or 4.3 L V6  
Pontiac V8 5-Hole Block 1970-77

5914-F10-SB	1967-69 Camaro/Firebird (F-Body), 1968-74 Nova (X-Body) Small-Block V8, 4.3L V6
5914-F20-V8	1970-71 Camaro/Firebird (F-Body) V8, 4.3L V6
5914-F21-V8	1972-81 Camaro/Firebird (F-Body) V8, 4.3L V6
OPTIONS	Billet-aluminum Chevy mounts with satin anodized finish
	Welded-assembly Chevy steel mounts with black powder-coat finish
	Welded-assembly 1970-77 Pontiac 5-hole block mounts with black powder-coat finish
	Spud hardware set with polished finish (3046)

#### Chevy V8 Mounts

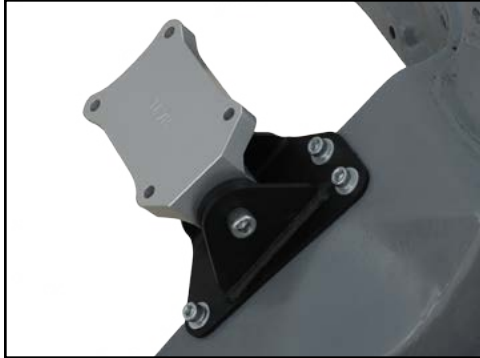


#### Pontiac Mounts



## LS Mount

Chevrolet LS-series engines are proportioned a bit differently than the standard V8 or six-cylinder motor that may have been installed in your Camaro, Firebird, or Nova. To ensure the drivetrain geometry remains unchanged, our LS mounts maintain the correct engine height and angle to prevent any pinion angle mismatches or drivetrain vibration. The LS engine is also moved forward 1-1/4", allowing the cylinder heads and valve covers to adequately clear the firewall. This correction also requires a slightly different transmission crossmember position for which we offer a tubular crossmember and adapter mount that bolts directly in place of the factory crossmember.



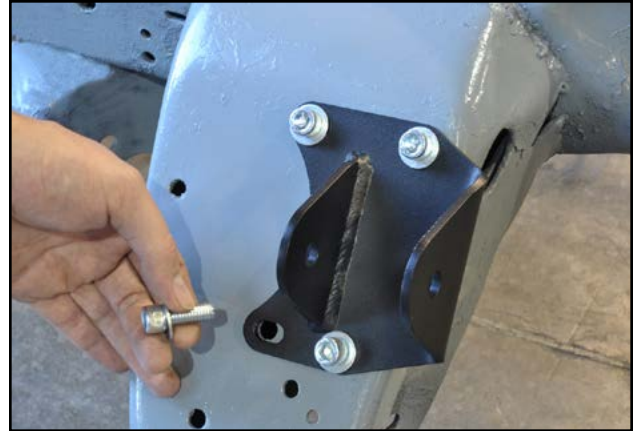
5914-A10-LS	1964-67 Chevelle (A-Body) LS-Series Engines
5914-A20-LS	1968-72 Chevelle (A-Body) LS-Series Engines
5914-F10-LS	1967-69 Camaro/Firebird (F-Body), 1968-74 Nova (X-Body) LS-Series Engines
5914-F20-LS	1970-71 Camaro/Firebird (F-Body) LS-Series Engines
5914-F21-LS	1972-81 Camaro/Firebird (F-Body) LS-Series Engines
OPTIONS	Billet-aluminum mounts with satin anodized finish
	Welded-assembly steel mounts with black powder-coat finish
	Spud hardware set with polished finish (3046)

## Frame Adapters

1964-67 Chevelle (A-Body)



1968-72 Chevelle (A-Body)



1967-69 Camaro/Firebird (F-Body)



1970-71 Camaro/Firebird (F-Body)



1972-81 Camaro/Firebird (F-Body)



## Transmission Crossmembers for Camaro and Nova Subframes

[CLICK for More Info Online](#)

To accommodate popular drivetrain combinations, direct bolt-in, tubular transmission crossmembers are available for factory-subframes in GM F-body (1967-81 Camaro and Firebird) and X-body (1968-74 Nova, Apollo, Omega, and Ventura) vehicles. Crossmembers are 1-1/4 x .120"-wall steel, dual-tube, fully enclosed structures that are stronger than OEM stamped designs and rigid enough for the vehicle to benefit from stiff polyurethane transmission mounts.

### Transmission Mount Frame Adapters

Our frame adapters are CNC machined from billet steel. These allow our exclusive tubular transmission crossmember to bolt into the OEM subframe, maintaining the correct engine transmission location and drive live angle.



### Chassisworks Clip - 1967-69 Camaro/Firebird and 1968-72 Nova OEM Frame Clip - 1967-69 Camaro/Firebird and 1968-74 Nova

Part Number	Description	Position <sup>1</sup>
5916-F10-01	4-Speed / Powerglide / Turbo 350 Transmission Crossmember	20.53"
5916-F10-02	700R4 / Tremec / Richmond 5-Speed / 4L60 Transmission Crossmember	22.30"
5916-F10-03	Turbo 400 / 200-4R / 4L65E <sup>2</sup> Transmission Crossmember	26.85"
5916-F10-04	Richmond 6-Speed ROD Transmission Crossmember	24.38"
5916-F10-05	Tremec Aftermarket T-56 Magnum 6-Speed (TUET11009 and TUET11012)	26.60"
5916-F10-06	4L80E/4L85E Chevrolet Automatic	30.36"
5916-F10-11	OEM Frame Clip Crossmember Adapters for V8 Engines	-
5916-F10-12	OEM Frame Clip Crossmember Adapters for LS Engines	-
ESP 3.1108G	GM-Style Transmission Mount, Polyurethane, Black	-
1	Position of mount is the measured distance from back surface of engine block to center of transmission mounting holes. Use length shown to determine usable crossmember for transmissions not listed. (Must verify pan clearance.)	
2	4L65E transmission can be used with LS-series engine only. 5916-F10-03 crossmember must be mounted in rearmost holes of subframe bracket.	

### Chassisworks Clip - 1970-81 Camaro/Firebird OEM Frame Clip - 1970-76 Camaro/Firebird

Part Number	Description	Position <sup>1</sup>
5916-F20-01	4-Speed / Powerglide / Turbo 350 Transmission Crossmember	20.53"
5916-F20-02	700R4 / Tremec / Richmond 5-Speed / 4L60 Transmission Crossmember	22.30"
5916-F20-03	Turbo 400 / 200-4R / 4L65E <sup>2</sup> Transmission Crossmember	26.85"
5916-F20-04	Richmond 6-Speed ROD Transmission Crossmember	24.38"
5916-F20-05	Tremec Aftermarket T-56 Magnum 6-Speed (TUET11009 and TUET11012)	26.60"
5916-F20-06	4L80E/4L85E Chevrolet Automatic	30.36"
5816-F20-13	OEM Frame Clip Crossmember Adapters for V8 and LS Engines	-
ESP 3.1108G	GM-Style Transmission Mount, Polyurethane, Black	-
1	Position of mount is the measured distance from back surface of engine block to center of transmission mounting holes. Use length shown to determine usable crossmember for transmissions not listed. (Must verify pan clearance.)	
2	4L65E transmission can be used with LS-series engine only. 5916-F20-03 crossmember must be mounted in rearmost holes of subframe bracket.	

All prices subject to change. Current pricing available at [www.cachassisworks.com](http://www.cachassisworks.com).



Chris Alston's Chassisworks, Inc.  
8661 Younger Creek Drive  
Sacramento, CA 95828

Order: 800-722-2269  
Tech: 916-388-0288  
Fax: 916-388-0295

[sales@cachassisworks.com](mailto:sales@cachassisworks.com)  
[www.cachassisworks.com](http://www.cachassisworks.com)