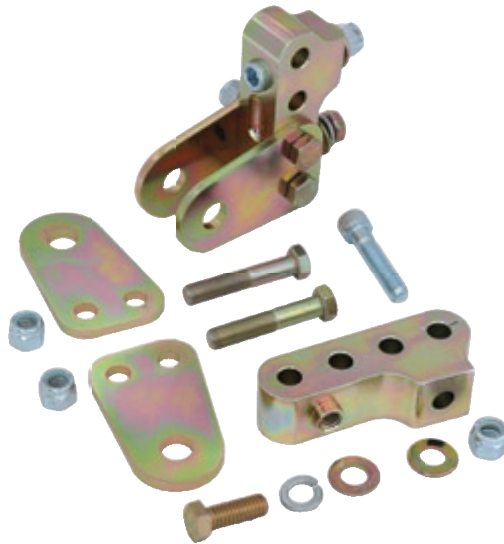


INSTALLATION GUIDE



5811-M40 Adjustable Lower Coil-Over Mount For OEM 8.8" Rearend Housing 1979-2004 Ford Fox Chassis Vehicles



Description: Direct-fit adjustable lower coil-over shock mount for OEM 8.8" rearend housings. Use with 1/2" bore x 1" wide COM8 bearing shock. Fits 1979-2004 Fox-Body vehicles.

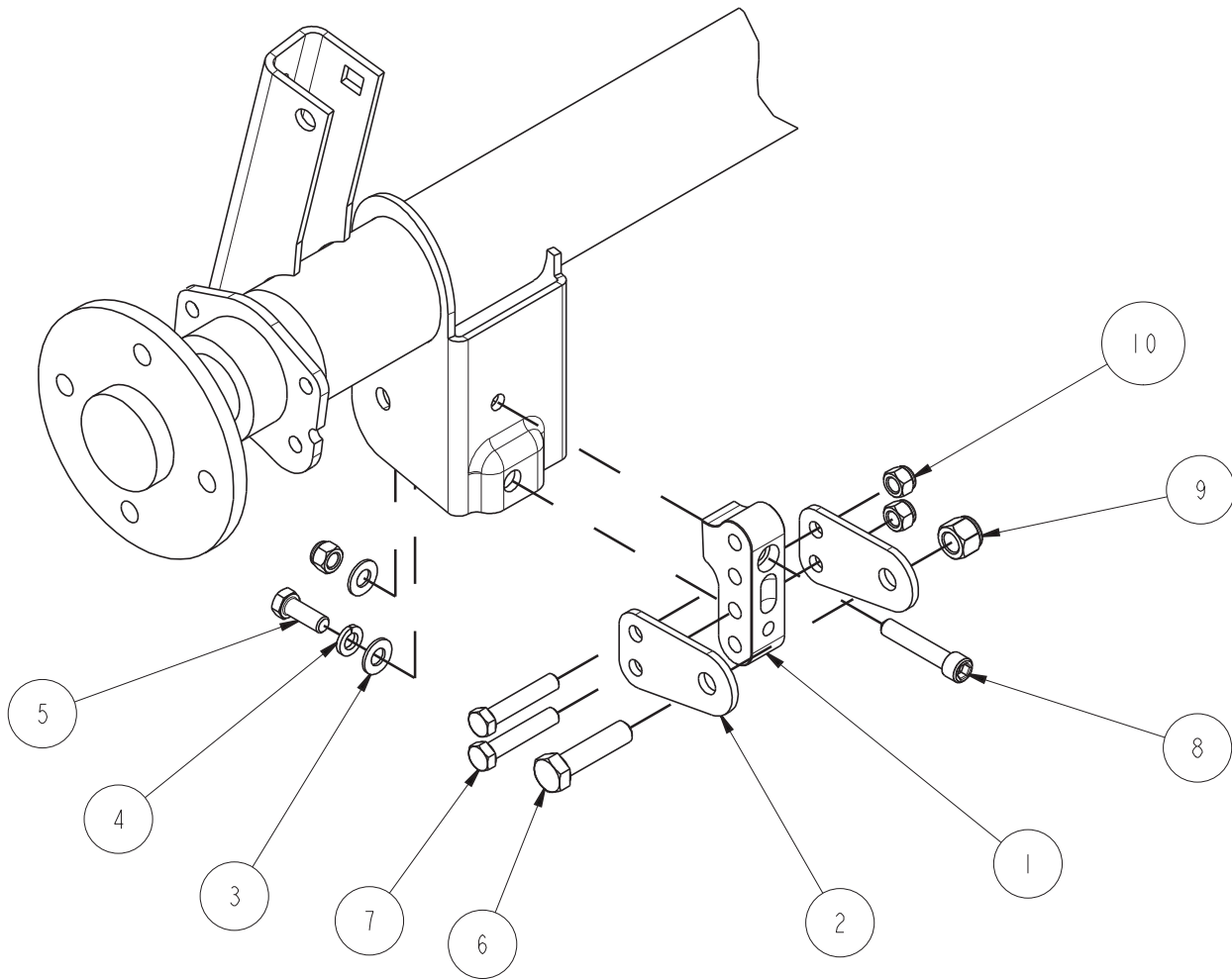
WARRANTY NOTICE:

There are NO WARRANTIES, either expressed or implied. Neither the seller nor manufacturer will be liable for any loss, damage or injury, direct or indirect, arising from the use or inability to determine the appropriate use of any products. Before any attempt at installation, all drawings and/or instruction sheets should be completely reviewed to determine the suitability of the product for its intended use. In this connection, the user assumes all responsibility and risk. We reserve the right to change specification without notice. Further, Chris Alston's Chassisworks, Inc., makes **NO GUARANTEE** in reference to any specific class legality of any component. **ALL PRODUCTS ARE INTENDED FOR RACING AND OFF-ROAD USE AND MAY NOT BE LEGALLY USED ON THE HIGHWAY.** The products offered for sale are true race-car components and, in all cases, require some fabrication skill. **NO PRODUCT OR SERVICE IS DESIGNED OR INTENDED TO PREVENT INJURY OR DEATH.**

Chris Alston's Chassisworks
8661 Younger Creek Drive
Sacramento, CA 95828
Phone: 916-388-0288
Technical Support: tech@cachassisworks.com



ITEM	QTY	PART NO.	DESCRIPTION
1	2	1529	ADJUSTABLE MOUNT BAR, $\varnothing 3/8$ HOLE ON 7/8 CENTERS, OEM
2	4	2198	SHOCK MOUNT, ADJUSTABLE, $\varnothing 3/8$ HOLES ON 7/8 CENTERS
3	4	3120-038S-Y	FLAT WASHER, 3/8 SAE, HARDENED
4	2	3108-038L-C	LOCKWASHER, 3/8 MEDIUM, PLATED
5	2	3100-038C1.00Y	HEX CAP SCREW, 3/8-16 x 1, GRADE 8, YELLOW ZINC
6	2	3102	HEX BOLT, 1/2-20 x 2, GRADE 8, YELLOW ZINC
7	4	3128	HEX BOLT, 3/8-24 x 2, GRADE 8, YELLOW ZINC
8	2	3103-038F2.00C	SOCKET HEAD CAP SCREW, GRADE 8, 3/8-24 x 2, CLEAR ZINC
9	2	3101-050-20C	LOCKNUT, 1/2-20, GRADE 8, NYLON INSERT, CLEAR ZINC
10	6	3101-038-24C	LOCKNUT, 3/8-24, GRADE 8, NYLON INSERT, CLEAR ZINC



DESCRIPTION		ADJUSTABLE SHOCK MOUNT, OEM 8.8 HOUSING, 79-04 MUSTANG	
Chris Alston's CHASSISWORKS INC. 8661 YOUNGER CREEK DRIVE SACRAMENTO, CA 95828 (916) 388-0288 FAX 388-0295		PART NO.	5811-M40
		1/24/07	DWG: 915811-M40

INSTRUCTIONS

1. Unbolt factory lower shock mount from rearend-housing axle bracket. (Figures 3-1 and 3-2)



Figure 3-1

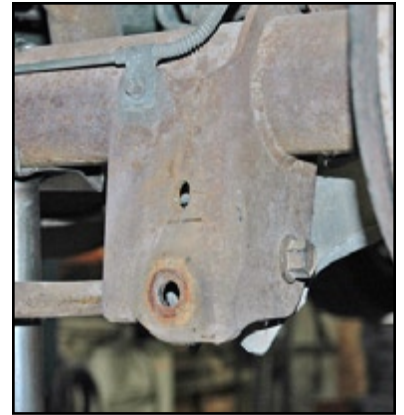


Figure 3-2

2. Install adjustable mount bar onto housing axle bracket. Only thread lower hex head cap screw (3/8-16 x 1" with washer and lockwasher) into block at this time. Bolt should be snug but still allow the bar to be rotated when pressure is applied.

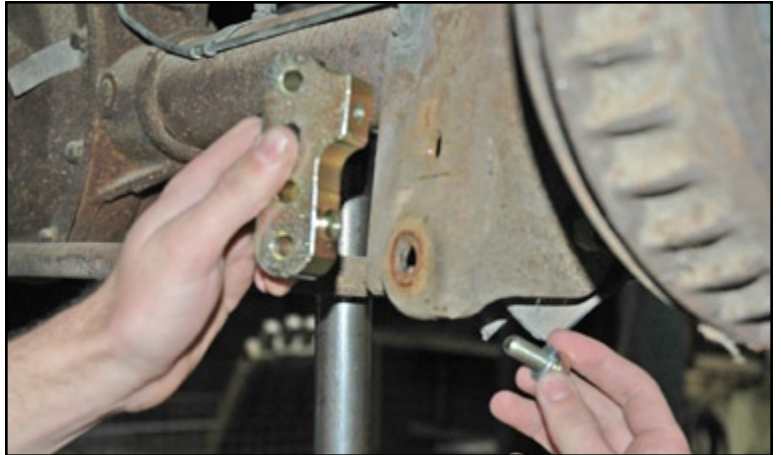


Figure 3-3

3. Use a center-punch or similar tool to verify that upper mount bar hole is lined up with slot in axle mount.

4. Using the mount bar as a guide, open up the existing hole with a drill and 3/8" diameter bit. (Figure 3-4)



Figure 3-4

5. Install upper socket head cap screw (3/8-24 x 2") and secure with washer and locknut on backside of axle bracket.
6. Tighten both upper socket head and lower hex head fasteners to 35-40 lb-ft. (Figure 3-5)

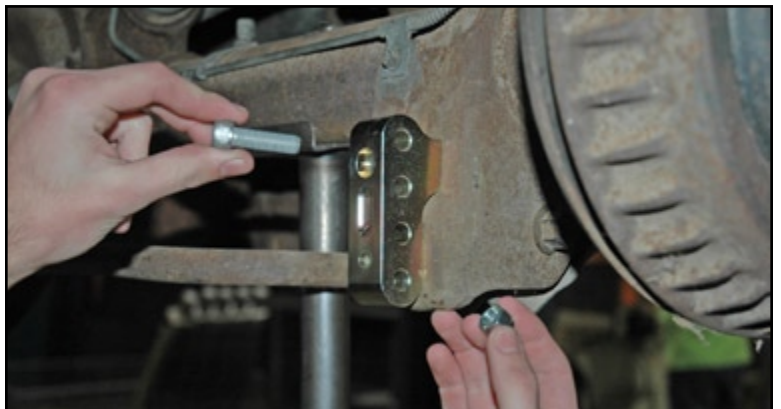


Figure 3-5

7. Bolt shock mount tabs to adjustable bar in desired position using two hex head cap screws (3/4-24 x 2") and locknuts. Tighten to 35-40 lb-ft. (Figure 4-1)

NOTE: Shock mount tabs can be mounted in one of three sets of holes and can also be flipped for 7/16" increment adjustments.

We recommend installing the tabs in the highest position possible to begin final setup. (Figure 4-4)

8. Shock can now be mounted using hex head cap screw (1/2-20 x 2") and locknut. Tighten to 45-50 lb-ft.



Figure 4-1



Figure 4-2



Figure 4-3



Figure 4-4