

INSTALLATION GUIDE



5811-M41 Adjustable Lower Coil-Over Mount For Direct Fit FAB9™ Rearend Housing 1979-2004 Ford Fox Chassis Vehicles



Description: Adjustable lower coil-over shock mount for direct-fit FAB9™ rearend housings. Use with 1979-2004 Fox-Chassis vehicles. Fits 1/2" bore x 1" wide COM8 shock bearing.

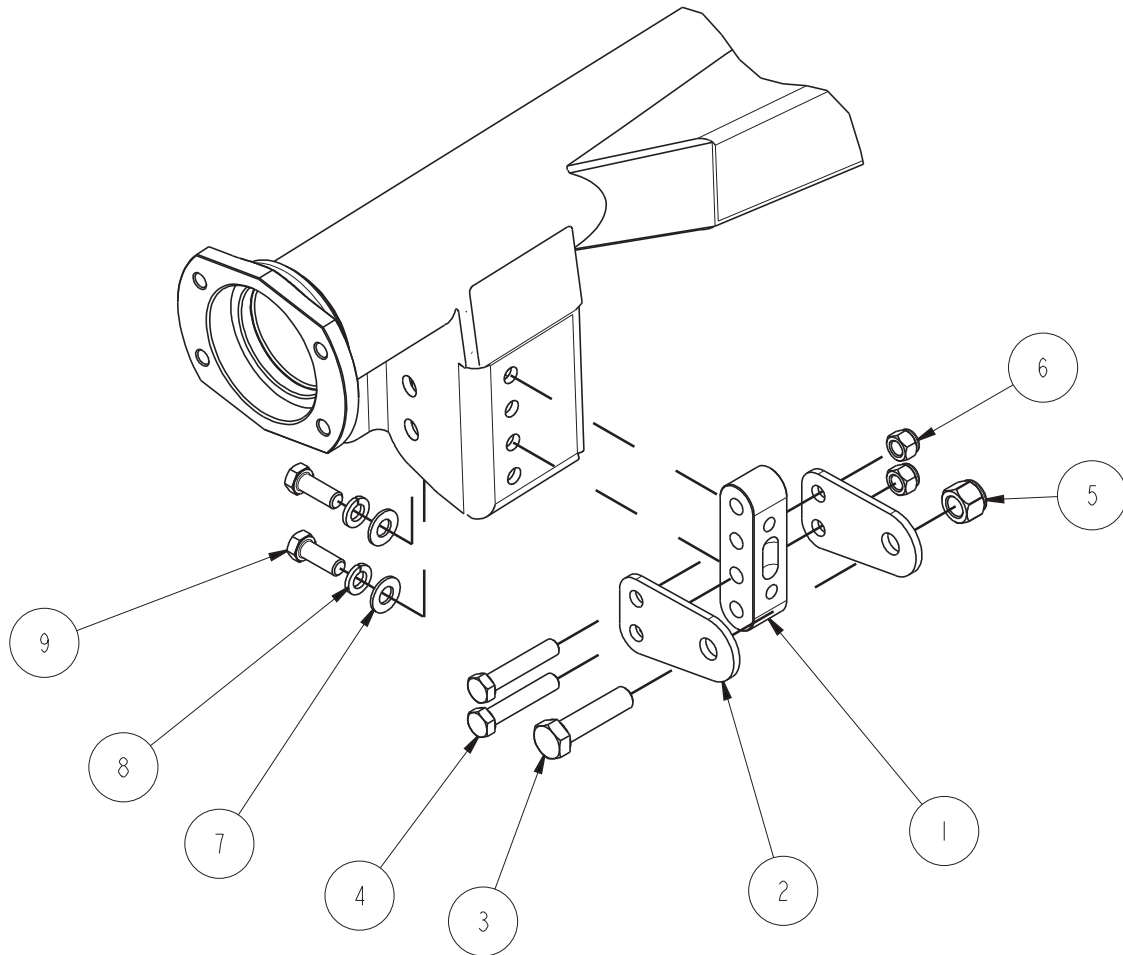
WARRANTY NOTICE:

There are NO WARRANTIES, either expressed or implied. Neither the seller nor manufacturer will be liable for any loss, damage or injury, direct or indirect, arising from the use or inability to determine the appropriate use of any products. Before any attempt at installation, all drawings and/or instruction sheets should be completely reviewed to determine the suitability of the product for its intended use. In this connection, the user assumes all responsibility and risk. We reserve the right to change specification without notice. Further, Chris Alston's Chassisworks, Inc., makes **NO GUARANTEE** in reference to any specific class legality of any component. **ALL PRODUCTS ARE INTENDED FOR RACING AND OFF-ROAD USE AND MAY NOT BE LEGALLY USED ON THE HIGHWAY.** The products offered for sale are true race-car components and, in all cases, require some fabrication skill. **NO PRODUCT OR SERVICE IS DESIGNED OR INTENDED TO PREVENT INJURY OR DEATH.**

Chris Alston's Chassisworks
8661 Younger Creek Drive
Sacramento, CA 95828
Phone: 916-388-0288
Technical Support: tech@cachassisworks.com



ITEM	QTY	PART NO.	DESCRIPTION
1	2	1528	ADJUSTABLE MOUNT BAR $\varnothing 3/8$ HOLE ON 7/8 CENTERS, FAB-9
2	4	2198	SHOCK MOUNT, ADJUSTABLE, $\varnothing 3/8$ HOLES ON 7/8 CENTERS
3	2	3102	HEX BOLT, 1/2-20 x 2, GRADE 8, YELLOW ZINC
4	4	3128	HEX BOLT, 3/8-24 x 2, GRADE 8, YELLOW ZINC
5	2	3101-050-20C	LOCKNUT, 1/2-20, GRADE 8, NYLON INSERT, CLEAR ZINC
6	4	3101-038-24C	LOCKNUT, 3/8-24, GRADE 8, NYLON INSERT, CLEAR ZINC
7	4	3120-038S-Y	FLAT WASHER, 3/8 SAE, HARDENED
8	4	3108-038L-C	LOCKWASHER, 3/8 MEDIUM, PLATED
9	4	3100-038C1.00Y	HEX CAP SCREW, 3/8-16 x 1, GRADE 8, YELLOW ZINC



DESCRIPTION		ADJUSTABLE SHOCK MOUNT, FAB-9 HOUSING, 79-04 MUSTANG	
Chris Alston's CHASSISWORKS INC. 8661 YOUNGER CREEK DRIVE SACRAMENTO, CA 95828 (916) 388-0288 FAX 388-0295		PART NO.	5811-M41
		1/24/07	DWG: 915811-M41

INSTRUCTIONS

1. Find correct orientation of adjustable mount bar.
The top mount bar hole should be offset toward the wheel. The bottom mount bar hole should be offset toward the third member. When correctly positioned the shock and mount will angle inward at the top. (Figures 3-1)

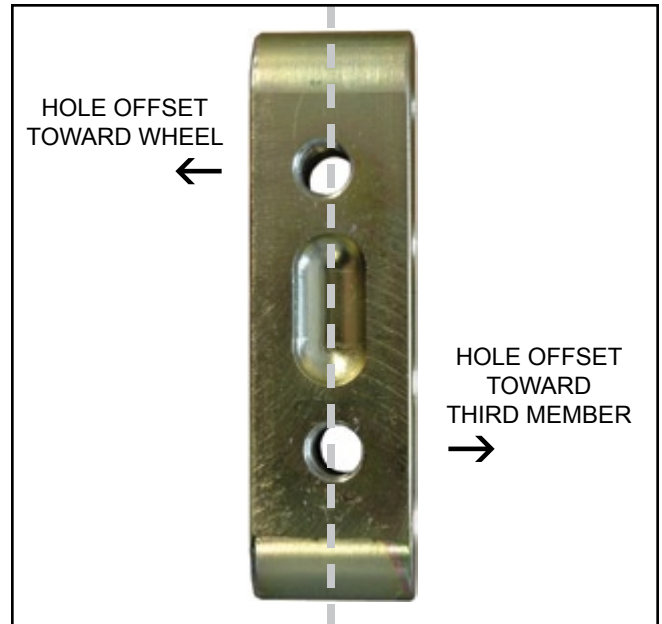


Figure 3-1

2. Use two hex head cap screws (3/8-16 x 1") with washer and lockwasher to secure adjustable mount bar onto housing axle bracket in one of two available positions. The top set provides a higher ride height range. The bottom set provides a 7/8" lower range. Tighten to 35-40 lb-ft. (Figures 3-2 and 3-3)

NOTE: Bar mounted in lower position shown in Figure 4-4.

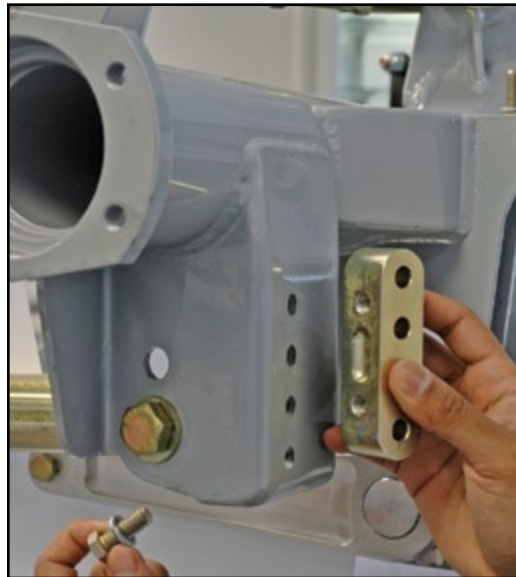


Figure 3-2



Figure 3-3

3. Bolt shock mount tabs to adjustable bar in desired position using two hex head cap screws (3/4-24 x 2") and locknuts. Tighten to 35-40 lb-ft. (Figure 3-4)

NOTE: Shock mount tabs can be positioned in one of three sets of holes and also flipped for 7/16" increment adjustments. (Figures 4-1, 4-2 and 4-3)

We recommend installing the tabs in the highest position possible to begin final setup. (Figure 4-3)

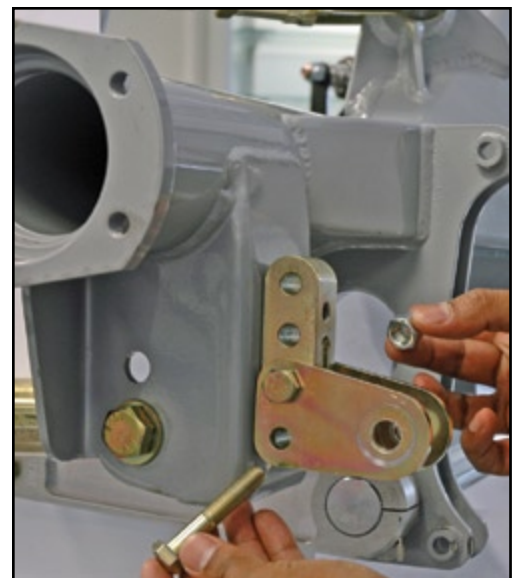


Figure 3-4

- Shock can now be mounted using hex head cap screw (1/2-20 x 2") and locknut. Tighten to 45-50 lb-ft.

NOTE: Shock mount tabs can be positioned in one of three sets of holes and also flipped for 7/16" increment adjustments. (Figures 4-1, 4-2 and 4-3)

NOTE: Bar mounted in lower position shown in Figure 4-4.

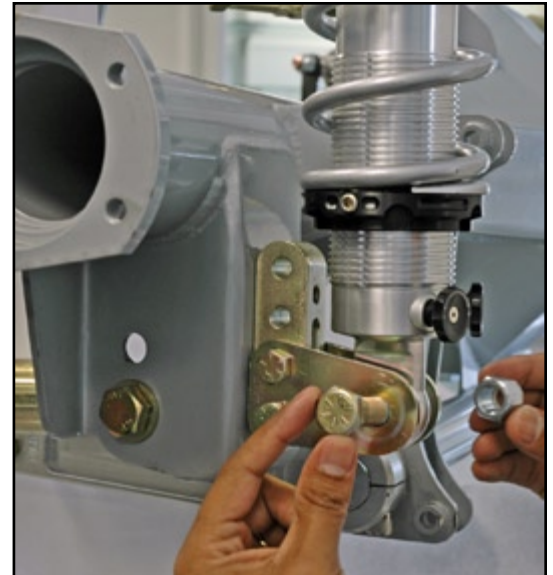


Figure 4-1

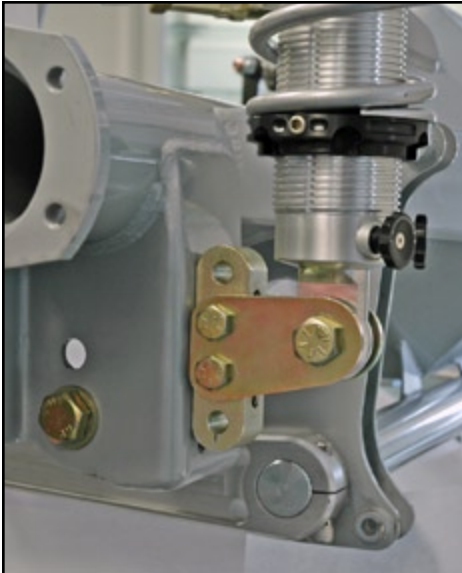


Figure 4-2

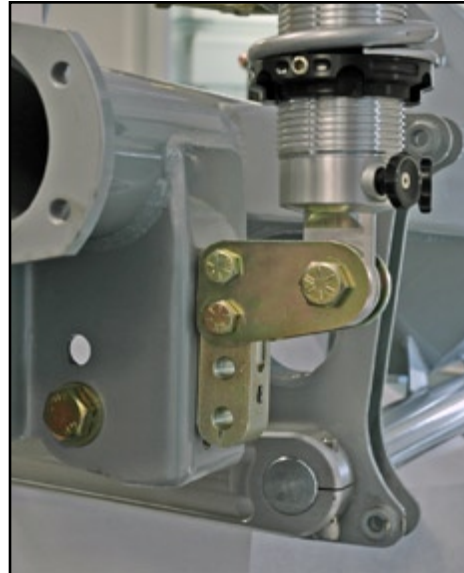


Figure 4-3

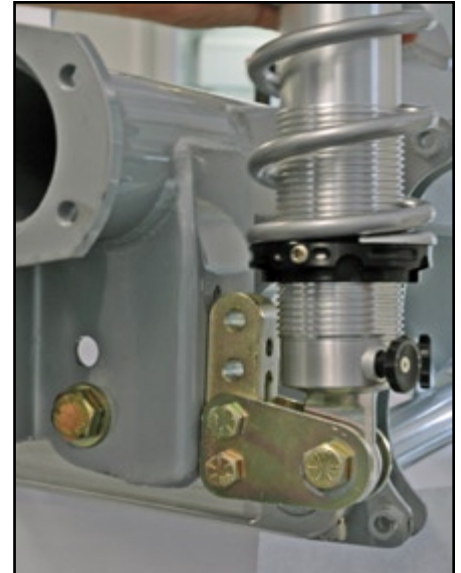


Figure 4-4