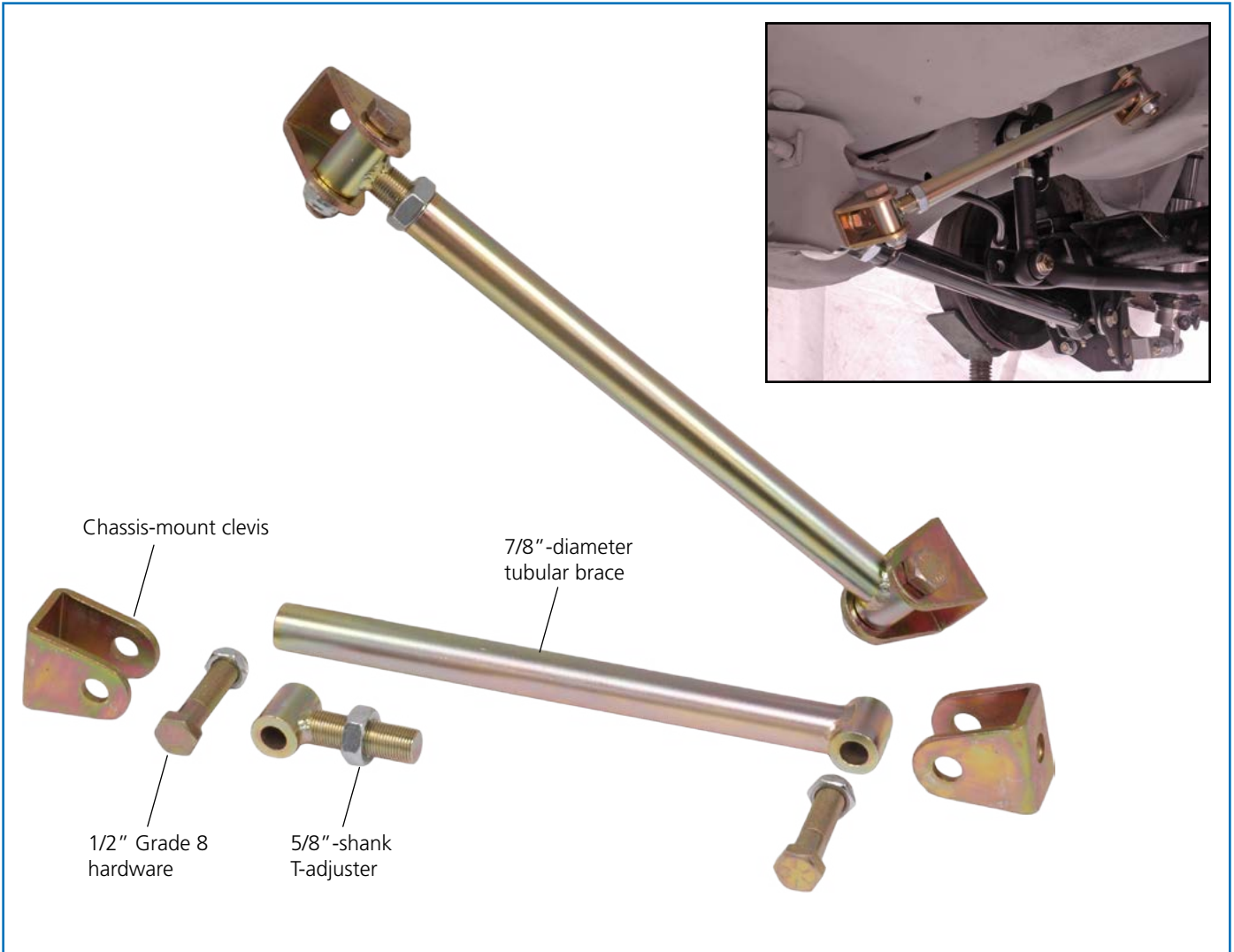


Rear Control Arm Support Brace for
1964-1972 GM A-Body Vehicles



GM A-Body Rear Control Arm Support

The increased levels of horsepower and traction achieved in modern muscle-car builds can easily cause structural damage to the chassis' suspension mounting areas. To remedy this, Chassisworks developed a simple-to-install rear control arm support brace that reinforces the lower-control-arm mounts and upper-control-arm crossmember of 1964-72 GM A-body vehicles (Chevelle, GTO, 442). Using the existing control-arm bolts, a folded clevis is mounted along side the upper and lower control arm mounts. The 7/8"-diameter, T-end support tube is mounted to one of the clevises on each side of the vehicle. The T-adjusters are then used to adjust the brace lengths and align them with the second clevis. After tightening all hardware, the support braces significantly strengthen the control arm mounting points, reducing unwanted flex, and increasing performance potential. Kits include zinc-plated support braces and T-adjusters, and Grade 8 hardware.

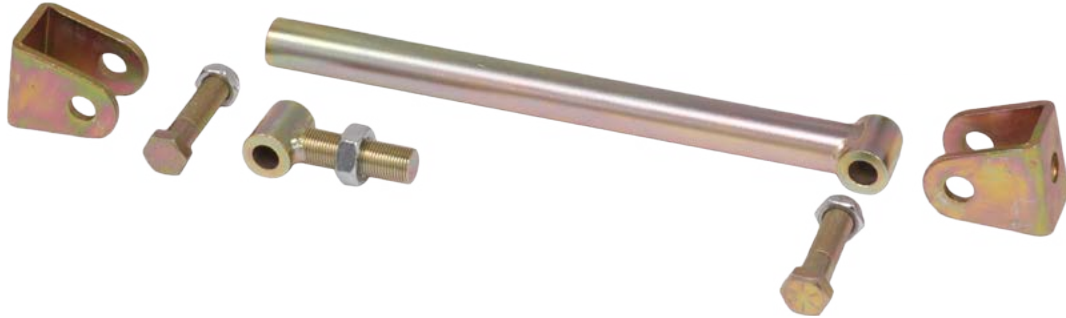
Features and Benefits:

- Reinforces factory lower arm mount and upper arm crossmember
- Simple bolt-on installation
- T-style tube ends improve brace rigidity
- 1/2" Grade 8 mounting hardware
- 7/8"-diameter steel tubing
- 5/8"-shank T-adjuster
- All components zinc plated

Applications and Pricing

Part Number	OEM Year	Make/Model	Description
5833-A10	1964-1967	GM A-Body	Rear Control Arm Support Brace
5833-A20	1968-1972	GM A-Body	Rear Control Arm Support Brace

1964-67 Support Brace



1968-72 Support Brace



All prices subject to change. Current pricing available at www.cachassisworks.com.



Chris Alston's Chassisworks, Inc.
8661 Younger Creek Drive
Sacramento, CA 95828

Order: 800-722-2269
Tech: 916-388-0288
Fax: 916-388-0295

sales@cachassisworks.com
www.cachassisworks.com