

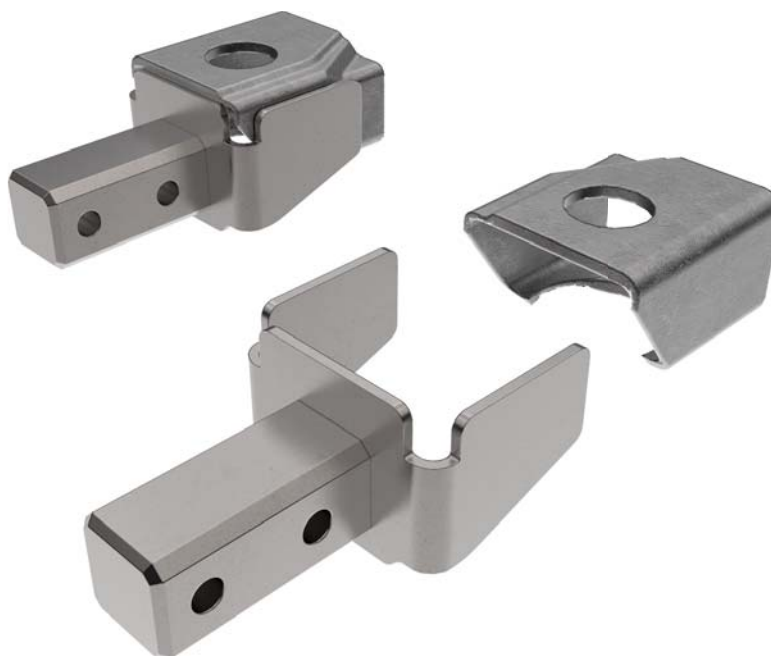
READ ALL INSTRUCTIONS COMPLETELY AND THOROUGHLY UNDERSTAND THEM BEFORE DOING ANYTHING.
CALL CHASSISWORKS TECH SUPPORT (916) 388-0288 IF YOU NEED ASSISTANCE.

INSTALLATION GUIDE



5903-F10-OEM

OEM g-Connector Adapter
'67-81 Camaro/Firebird and '68-72 Nova

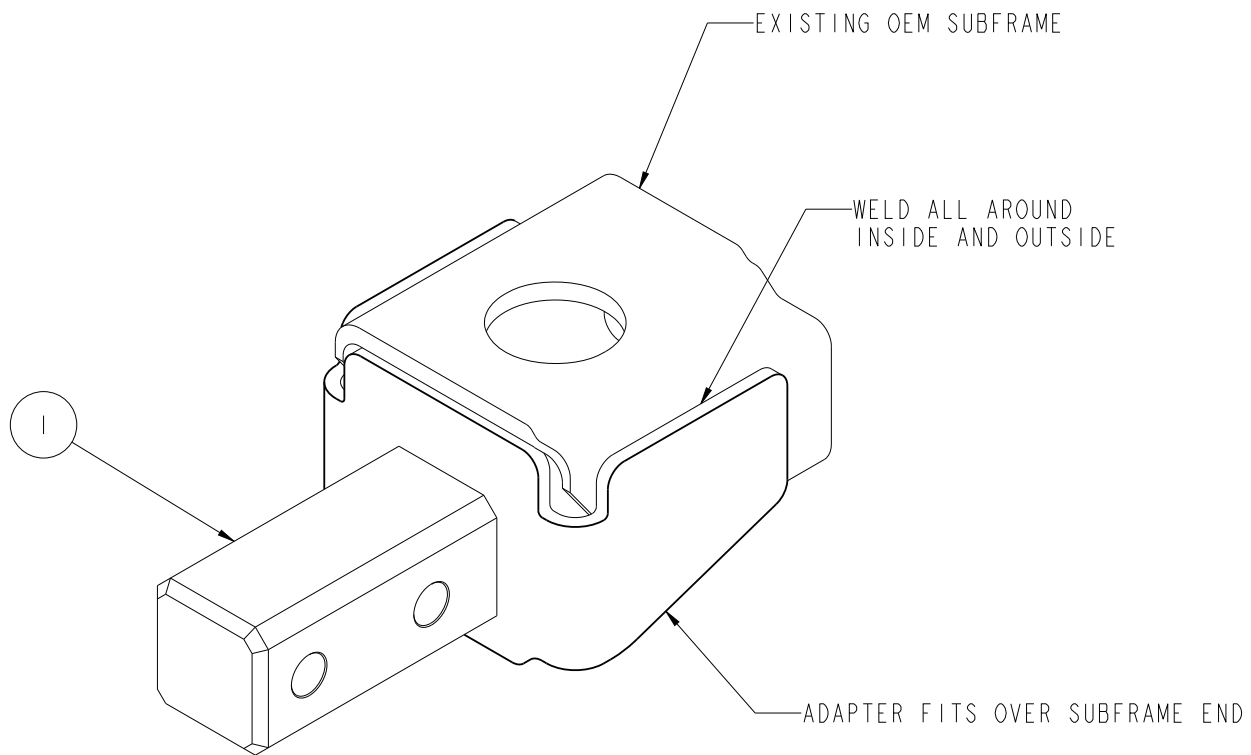


Description: Subframe connector adapter weld-in for subframe connectors with OEM front subframe.

Applications: '67-81 Camaro, '67-81 Firebird (F-Body), and '68-72 Nova (X-Body)

Notes: For use with Chassisworks subframe connectors

ITEM	QTY	PART NO.	DESCRIPTION
1	2	7962-0109	ADAPTER, SUBFRAME CONNECTOR, OEM SUBFRAME, 67-81 CAMARO



DESCRIPTION		OEM SUBFRAME ADAPTER, WELD-ON, 67-81 CAMARO/FIREBIRD	
<i>Chris Alston's</i> CHASSISWORKS INC. 8661 YOUNGER CREEK DRIVE SACRAMENTO, CA 95828 (916) 388-0288 FAX 388-0295		PART NO.	5903-F10-OEM
		2/23/15	DWG: 7951-5903F10OEM

PARTS LIST

5903-F10-OEM - g-Connector Adapter '67-81 Camaro/Firebird

Qty	Part Number	Description
2	7962-0109	Connector adapter F10-F20 OEM subframe

INSTRUCTIONS

If your 1974 -1981 vehicle has a OEM clip that extends way past the rear body mount (see image at right), it will be necessary to saw off approximately 3" of the OEM clip to allow the proper installation of the subframe connector system. Verify the cut-off dimension before proceeding.



1. Remove any scale or rust from the rear section on the OEM subframe.
2. Loosely bolt the adapter to the frame connector.
3. Bolt the rear of the connector to the car.
4. Slip the adapter over the OEM subframe and clamp into position as shown.
5. Once the connector is in place, tack weld adapter to OEM subframe.
6. Carefully unbolt frame connector.
7. Remove the body bushing before stitch welding the adapter to prevent damaging the bushing.
8. Stitch weld adapter where it contacts the OEM sub frame.
9. Paint the adapter and the subframe to prevent rust and corrosion.



WARRANTY NOTICE:

There are NO WARRANTIES, either expressed or implied. Neither the seller nor manufacturer will be liable for any loss, damage or injury, direct or indirect, arising from the use or inability to determine the appropriate use of any products. Before any attempt at installation, all drawings and/or instruction sheets should be completely reviewed to determine the suitability of the product for its intended use. In this connection, the user assumes all responsibility and risk. We reserve the right to change specification without notice. Further, Chris Alston's Chassisworks, Inc., makes **NO GUARANTEE** in reference to any specific class legality of any component. **ALL PRODUCTS ARE INTENDED FOR RACING AND OFF-ROAD USE AND MAY NOT BE LEGALLY USED ON THE HIGHWAY.** The products offered for sale are true race-car components and, in all cases, require some fabrication skill. **NO PRODUCT OR SERVICE IS DESIGNED OR INTENDED TO PREVENT INJURY OR DEATH.**

Chris Alston's Chassisworks
8661 Younger Creek Drive
Sacramento, CA 95828
Phone: 916-388-0288
Technical Support: sales@cachassisworks.com

