

INSTALLATION GUIDE



5916-F10-11

TRANSMISSION CROSSMEMBER ADAPTER KIT 1967-69 Camaro (GM F-Body) and 1968-74 Nova (GM X-Body)



Description: Billet steel adapter kit to mount Chassisworks tubular transmission crossmembers (5916-F10-XXX) into 1967-69 Camaro (GM F-Body) and 1968-74 Nova (GM X-Body) factory subframes.

PARTS LIST

5916-F10-11 - TUBULAR TRANSMISSION CROSSMEMBER ADAPTER KIT

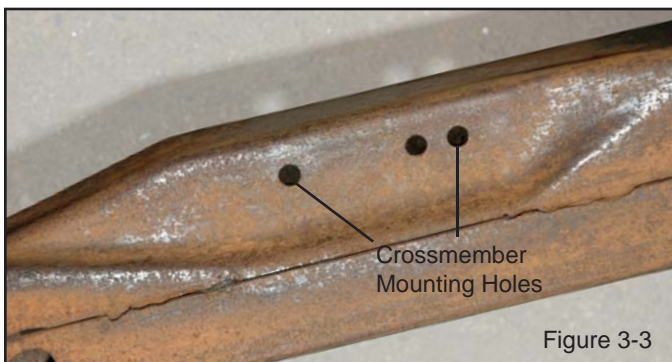
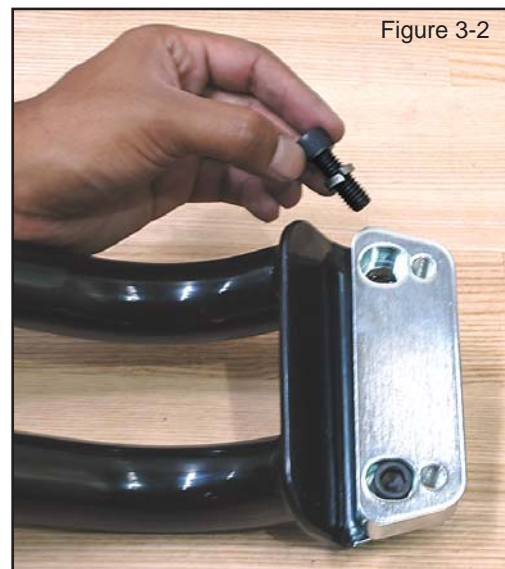
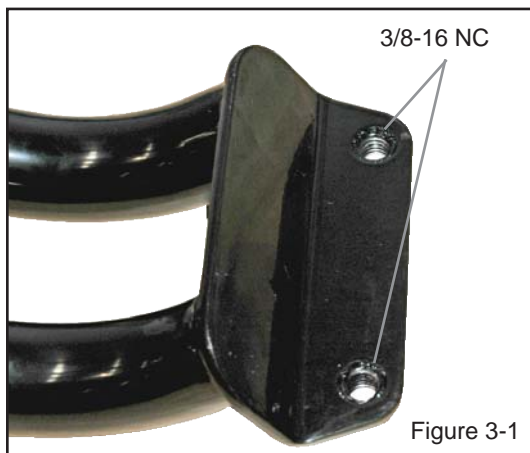
Qty	Part Number	Description
2	1518	Billet steel transmission crossmember adapter, zinc plated
4	3103-038C1.00C	Allen head 3/8-16 x 1", socket-head cap screw
4	3108-038H-C	Lockwasher 3/8", high-collar

This adapter kit is used to bolt the Chassisworks tubular transmission crossmembers listed below into the OEM front subframes of 1967-69 Camaro (GM F-Body) and 1968-74 Nova (GM X-Body).

Part Number	Description
5916-F10-01	4-Speed / PowerGlide / Turbo 350
5916-F10-02	700R / Tremec TKO 5-Speed (TRG-FOC5009A) / Richmond 5-Speed
5916-F10-03	Turbo 400
5916-F10-04	Richmond 6-Speed Rod

INSTRUCTIONS

1. Use a 3/8-16 NC tap to chase threads in weld nuts on both ends of crossmember (Figure 3-1).
2. The billet adapters bolt to the Chassisworks transmission crossmember using 3/8-16 x 1" socket head allens. Slide 3/8" high collar lock washer over allen bolt before installing.
3. The adapter block is slotted to allow for differences in width of OEM subframe. Start with allen bolts centered in counter bored slot, then tighten (Figure 3-2).
4. Once adapters are mounted, position crossmember on subframe. Line up threaded adapter plate holes with OEM transmission crossmember mounting holes (Figure 3-3 & 3-4).
5. If holes do not line up, you will need to loosen allen bolts and adjust the position of adapter plates accordingly. Be sure to move adapter plates equally on both sides to keep transmission crossmember centered between frame rails.
6. Use the 3/8-16 x 1" hex bolts, lock washers and flat washers supplied with Chassisworks transmission crossmember to mount crossmember to subframe.
7. Once the new transmission crossmember is correctly bolted to subframe, use the 7/16-14 x 1" hex bolts, lock washers and flat washers to secure the transmission mount.



View from top side of subframe.



View from top side of subframe.

WARRANTY NOTICE:

There are NO WARRANTIES, either expressed or implied. Neither the seller nor manufacturer will be liable for any loss, damage or injury, direct or indirect, arising from the use or inability to determine the appropriate use of any products. Before any attempt at installation, all drawings and/or instruction sheets should be completely reviewed to determine the suitability of the product for its intended use. In this connection, the user assumes all responsibility and risk. We reserve the right to change specification without notice. Further, Chris Alston's Chassisworks, Inc., makes **NO GUARANTEE** in reference to any specific class legality of any component. **ALL PRODUCTS ARE INTENDED FOR RACING AND OFF-ROAD USE AND MAY NOT BE LEGALLY USED ON THE HIGHWAY.** The products offered for sale are true race-car components and, in all cases, require some fabrication skill. **NO PRODUCT OR SERVICE IS DESIGNED OR INTENDED TO PREVENT INJURY OR DEATH.**

Chris Alston's Chassisworks
8661 Younger Creek Drive
Sacramento, CA 95828
Phone: 916-388-0288
Technical Support: sales@cachassisworks.com

