

# INSTALLATION GUIDE



**5916-F10-12**

## **Offset Transmission Crossmember Adapter Set 1967-1969 Camaro, 1968-1974 Nova**



### **Description:**

Transmission crossmember adapters for use with stock subframes of 1968-1969 Camaros and 1968-1974 Novas. Enables direct bolt-on installation of Chassisworks tubular transmission crossmembers (5916-F10-XXX) with stock subframes. Offset mounting holes correctly position crossmember for use with LS-engine equipped vehicles. Complimentary part to 5914-F10 LS-engine adapters and mounts. Adapters and hardware included.

### **WARRANTY NOTICE:**

There are NO WARRANTIES, either expressed or implied. Neither the seller nor manufacturer will be liable for any loss, damage or injury, direct or indirect, arising from the use or inability to determine the appropriate use of any products. Before any attempt at installation, all drawings and/or instruction sheets should be completely reviewed to determine the suitability of the product for its intended use. In this connection, the user assumes all responsibility and risk. We reserve the right to change specification without notice. Further, Chris Alston's Chassisworks, Inc., makes **NO GUARANTEE** in reference to any specific class legality of any component. **ALL PRODUCTS ARE INTENDED FOR RACING AND OFF-ROAD USE AND MAY NOT BE LEGALLY USED ON THE HIGHWAY.** The products offered for sale are true race-car components and, in all cases, require some fabrication skill. **NO PRODUCT OR SERVICE IS DESIGNED OR INTENDED TO PREVENT INJURY OR DEATH.**

Chris Alston's Chassisworks  
8661 Younger Creek Drive  
Sacramento, CA 95828  
Phone: 916-388-0288  
Technical Support:tech@cachassisworks.com



# PARTS LIST

## 5916-F10-12 - Offset Transmission Crossmember Adapter Set

Qty	Part Number	Description
1	1534	Driver-side adapter for g-Machine Camaro transmission crossmember
1	1535	Passenger-side adapter for g-Machine Camaro transmission crossmember
1	7952-5916F1012	Hardware bag

## 7952-5916F1012 - Hardware Bag

Qty	Part Number	Description
4	3103-038C1.00C	Socket head 3/8-16 x 1" cap screw, Grade 8, clear zinc plated
4	3108-038H-C	Lock washer 3/8" high collar, .377" x .550" OD, clear zinc plated

# INSTRUCTIONS

1. Set the crossmember onto a suitable working surface with the bottom facing up, as shown. The driver side is closest to the left edge in the image.



2. Use a 3/8"-16 NC tap to chase threads in the weld nuts on both ends of the crossmember.



3. The billet adapters are engraved with their part number. #1534 is the driver side and #1535 in the passenger side. Be sure to install them on the correct end of the crossmember.

### Driver Side



### Passenger Side



4. The billet adapters bolt to the Chassisworks transmission crossmember using 3/8-16 x 1" socket head cap screws. Slide a 3/8" high-collar lock washer over each socket head cap screw before installing.



5. The adapter block is slotted to allow for differences in width of OEM subframe. Start with the socket head cap screws centered in counter-bored slot, then tighten.



6. The transmission crossmember with adapters is ready to position on the subframe.



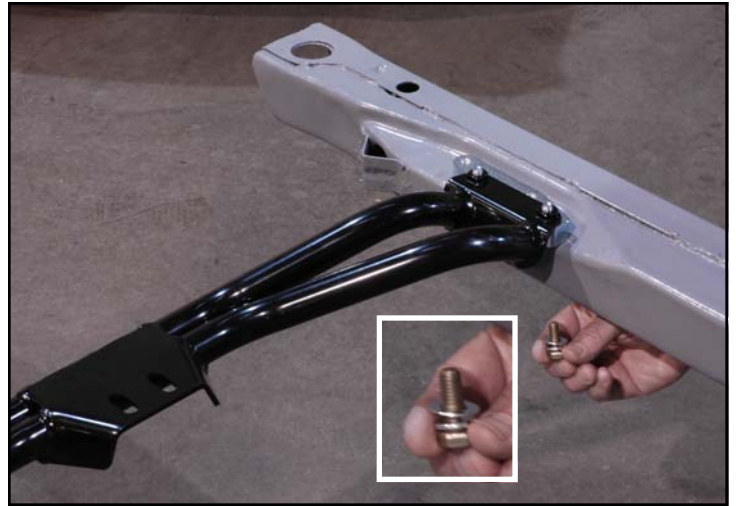
7. Remove the OEM crossmember and discard any hardware.



8. Line up the adapter plate's threaded holes with the OEM crossmember mounting holes.
9. If the holes do not line up, you will need to loosen the cap screws and adjust the position of the adapter plates accordingly. Be sure to move the adapter plates equally on both sides to keep the transmission crossmember centered between the frame rails.



10. Use the 3/8-16 x 1" hex bolts, lock washers, and flat washers (supplied with crossmember) to mount the crossmember to the subframe.
11. Once the new transmission crossmember is correctly bolted to subframe, use the 7/16-14 x 1" hex bolts, lock washers, and flat washers to secure the transmission mount (sold separately).



12. The combination of adapter kit 5916-F10-12 and engine mounts 5914-F10 allows LSX engines to be installed in the OEM subframe.

