

READ ALL INSTRUCTIONS COMPLETELY AND THOROUGHLY UNDERSTAND THEM BEFORE DOING ANYTHING.
CALL CHASSISWORKS TECH SUPPORT (916) 388-0288 IF YOU NEED ASSISTANCE.

INSTALLATION GUIDE



300-0162

Shock-Mount Extenders for Set g-Bar/g-Link

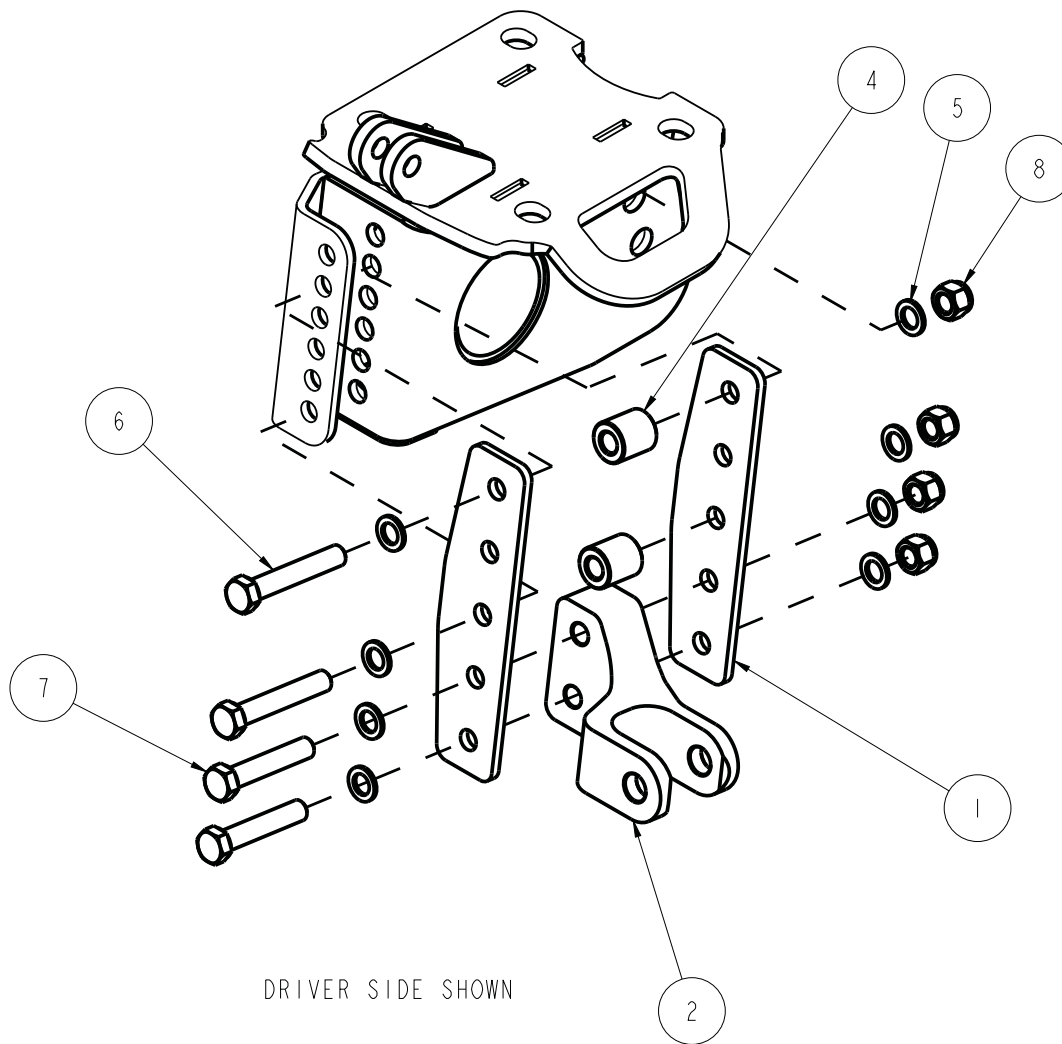


Description: Bracket set to move lower shock mount down on g-Bar and g-Link canted 4 bar suspensions. Lowers mount 1-1/4" or 2-1/2" depending on orientation of the billet shock mount.

Applications: Chassisworks g-Bar and g-Link suspensions with billet-aluminum shock mount.

Note: This lowering kit alters the rear ride height below the operating range that was originally intended for the g-Bar and g-Link suspension systems. Installation requires that vehicle clearance and suspension misalignment be verified to ensure there is no binding or contact with the chassis. Suspension travel must be limited using chassis bump stops to prevent bottoming out and damaging the shocks. Cutting the underbody may also be required for drivetrain clearance.

ITEM	QTY	PART NO.	DESCRIPTION
1	4	7959-0108	STRAP, G-BAR LOWERING
2	1	1477-D	G-BAR STRAIGHT SHOCK MOUNT, DRIVER, ADJUSTABLE, OFFSET
3	1	1477-P	G-BAR STRAIGHT SHOCK MOUNT, PSGR, ADJUSTABLE, OFFSET
4	4	7959-0109	SPACER, G-BAR LOWERING STRAP
5	16	3109-038-S-2-Y	AIRCRAFT WASHER 3/8 x .062 THICK
6	4	3100-038F2.25Y	HEX BOLT, 3/8-24 x 2 1/4, GRADE 8, YELLOW ZINC
7	4	3100-038F2.00Y	HEX BOLT, 3/8-24 x 2, GRADE 8, YELLOW ZINC
8	8	3101-038-24C	LOCKNUT, 3/8-24, GRADE 5, NYLON INSERT, CLEAR ZINC



NOTES:

- 1. 1477-D AND 1477-P MAY BE SWAPPED TO ADJUST SHOCK MOUNT 1 1/4 HIGHER

DESCRIPTION		SHOCK EXTENDERS, LOWER MOUNT, G-BAR	
Chris Alston's CHASSISWORKS INC. 8661 YOUNGER CREEK DRIVE SACRAMENTO, CA 95828 (916) 388-0288 FAX 388-0295		PART NO.	300-0162
		4/19/12	DWG: 91300-0162

PARTS LIST

300-0162 g-Bar Shock Mount Extenders

Qty	Part Number	Description
4	3100-038F2.25Y	Bolt 3/8-24 x 2-1/4" hex cap screw
4	3101-038-24C	Locknut 3/8-24 nylon insert
8	3109-038-S-2-Y	Aircraft washer 3/8" small OD
4	7959-0108	Lowering strap g-bar/g-Link
4	7959-0109	Spacer 3/4" OD x .156-wall x .825 long

INSTRUCTIONS

If you are installing the g-Bar/g-Link for the first time, start at step 4.

1. If you already have the g-Bar/g-Link installed, raise the car off the ground and put jack stands under the rocker panels.
2. Support the rear end housing on the axle tube, so the shock mount can be removed safely.
3. Unbolt the coil-over shock from the billet mount, then remove the billet shock mount.
4. Slide the aircraft washer over the 3/8" bolts and insert the bolts through the strap using the top and third hole. The flat side of the strap is toward the inside of the car. The bolts then go through the lower link axle bracket, followed by the spacers and a second strap. Install the aircraft washers and locknuts from the inside of the bracket and tighten evenly to 35 lb-ft.
5. Slide the billet shock mount between the straps and attach with the original hardware.



- The billet mount on the left is shown in the lowest position.
- The billet mount on the right is shown in the raised position this will the ride height 1-1/4" from the lowest point. To do this the billet mount will need to be swapped from the driver to passenger side so the coil-over will clear the rear end housing.



- Repeat this for the opposite.
- Remove the coil-over spring and move the suspension through its entire travel range to make sure there is no binding or clearance problems.

WARRANTY NOTICE:

There are NO WARRANTIES, either expressed or implied. Neither the seller nor manufacturer will be liable for any loss, damage or injury, direct or indirect, arising from the use or inability to determine the appropriate use of any products. Before any attempt at installation, all drawings and/or instruction sheets should be completely reviewed to determine the suitability of the product for its intended use. In this connection, the user assumes all responsibility and risk. We reserve the right to change specification without notice. Further, Chris Alston's Chassisworks, Inc., makes **NO GUARANTEE** in reference to any specific class legality of any component. **ALL PRODUCTS ARE INTENDED FOR RACING AND OFF-ROAD USE AND MAY NOT BE LEGALLY USED ON THE HIGHWAY.** The products offered for sale are true race-car components and, in all cases, require some fabrication skill. **NO PRODUCT OR SERVICE IS DESIGNED OR INTENDED TO PREVENT INJURY OR DEATH.**

Chris Alston's Chassisworks
8661 Younger Creek Drive
Sacramento, CA 95828
Phone: 916-388-0288
Technical Support: sales@cachassisworks.com

