

INSTALLATION GUIDE



KPC SRBF-C31

Front Shock Relocater Kit 1963-1972 Chevrolet and GMC C10 Pickup



Description: Bolt-on upper shock mount for 1963-1972 Chevrolet and GMC C10 pickup, with mounting hardware.

PARTS LIST

KPC SRBF-C31 - Bolt-on Front Shock Relocater, '63-72 C10

Qty	Part Number	Description
1	7932-006	Shock mount front driver side 63-72 C10
1	7932-009	Shock mount front passenger side 63-72 C10

7926-SRBFC31 - Hardware Bag

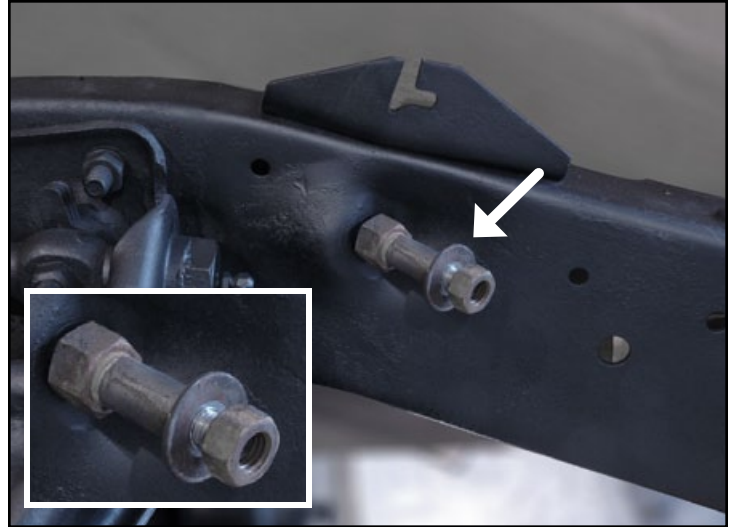
Qty	Part Number	Description
8	3100-0381.25Y	Bolt 3/8-16 x 1-1/4" hex head cap screw
8	3101-038-16C	Locknut 3/8-16 nylon insert
16	3157-038S-C	Washer flat 3/8 SAE plated

Shock Options

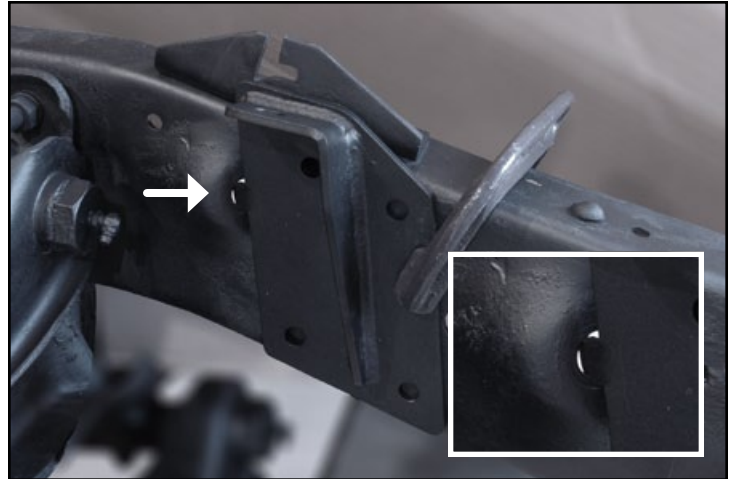
Qty	Part Number	Description
2	KPC SANS-FTB	Shock for tubular LCA with bags and bolt-on mount non adjustable steel body
1pr	VAS 14145-515	B/I-Q1-5.15-STEM B-CROSSBAR A, 5.15 TRAVEL
1pr	VAS 14245-515	B/I-Q2-5.15-STEM B-CROSSBAR A, 5.15 TRAVEL
1	VAS 508-102	Stud VariShock on KP layarm bag LCA

INSTRUCTIONS

1. Raise the truck and support with jack stands placed under the frame.
2. Remove the OEM shock upper mount stud.



3. Place the shock mount against the frame rail and insert the tang into the factory shock-stud hole.
4. Line the mount up with the bottom edge of the frame rail. Use a C-clamp to hold the bracket's position.



5. Use a 3/8"-diameter bit to drill one of the four holes through the frame rail. The mount plate will act as a guide.
6. Secure using a 3/8-16 x 1-1/4" hex bolt, flat washers, and locknut. There must be a flat washer under the bolt head and locknut.



7. Verify that the mount plate still lines up with the top edge of the frame rail.
8. Continue drilling the next hole and immediately install the mounting hardware.
9. Drill the last two holes and install hardware.
10. Torque all four bolts to 35 lb-ft.
11. Repeat procedure to install passenger-side mount.



Mounting Steel Shocks

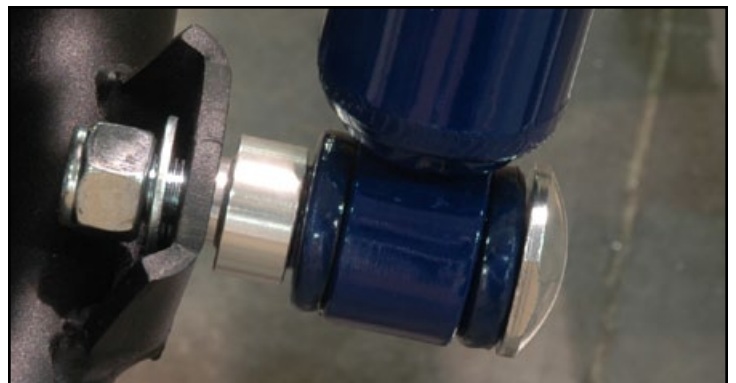
12. Mount the top of the shock to the frame bracket as shown. Do not fully tighten at this time.



13. Mount the bottom of the shock to the control arm mounting tab using the hardware shown to the right.



14. Slide the domed stud through the shocks lower bushing, slide the stepped aluminum spacer over the stud. The shoulder on the spacer goes into the hole in the LCA shock mount tab.
15. Put a 1/2" SAE flat washer on the inside of the mount tab followed by the locknut. Tighten the locknut.

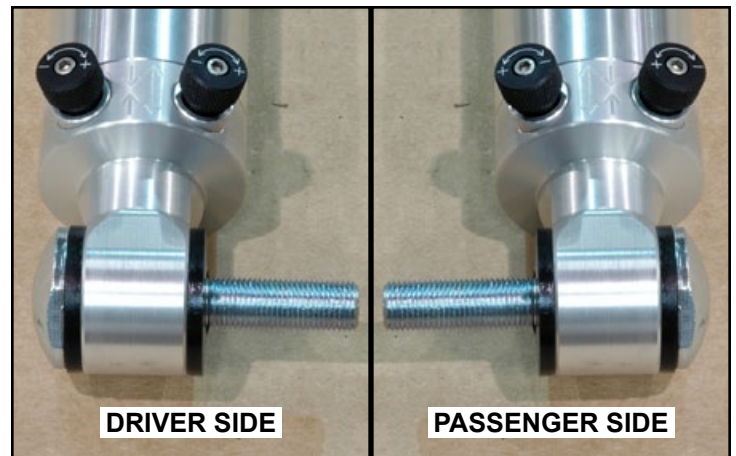


16. Tighten the upper shock stud until the bushings just start to buldge.
17. Repeat procedure for the passenger-side shock.

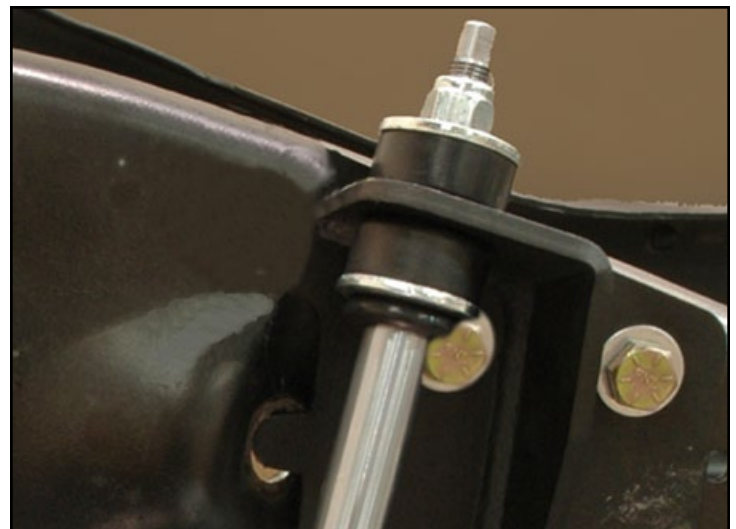


Mounting VariShocks

18. Press two poly bushing into each lower shock eye.
19. Press the domed shock stud into the bushing until fully seated. The photos to the right show the correct orientation in relation to the adjustment knobs.



20. Mount the top of the shock to the frame bracket as shown. Do not fully tighten at this time.



21. Mount the bottom of the shock to the control arm mounting tab using the hardware shown to the right.



22. Insert the domed stud through the shock bushings.

23. Slide the 5/8" SAE washer over the stud followed by the stepped aluminum spacer. The shoulder on the spacer goes into the hole in the LCA shock mount tab.

24. Put a 1/2" SAE flat washer on the inside of the mount tab followed by the locknut.

25. Tighten the locknut.

The 5/8" washer must be centered on the stud when tightening. The shank of the domed stud sits inside the washer.



26. Tighten the upper shock stud until the bushings just start to buldge.

27. Repeat procedure for passenger-side shock.



WARRANTY NOTICE:

There are NO WARRANTIES, either expressed or implied. Neither the seller nor manufacturer will be liable for any loss, damage or injury, direct or indirect, arising from the use or inability to determine the appropriate use of any products. Before any attempt at installation, all drawings and/or instruction sheets should be completely reviewed to determine the suitability of the product for its intended use. In this connection, the user assumes all responsibility and risk. We reserve the right to change specification without notice. Further, Chris Alston's Chassisworks, Inc., makes **NO GUARANTEE** in reference to any specific class legality of any component. **ALL PRODUCTS ARE INTENDED FOR RACING AND OFF-ROAD USE AND MAY NOT BE LEGALLY USED ON THE HIGHWAY.** The products offered for sale are true race-car components and, in all cases, require some fabrication skill. **NO PRODUCT OR SERVICE IS DESIGNED OR INTENDED TO PREVENT INJURY OR DEATH.**

KP Components
A Chris Alston's Chassisworks Inc., Brand
8661 Younger Creek Drive
Sacramento, CA 95828
Technical Support: KPtech@cachassisworks.com

