

READ ALL INSTRUCTIONS COMPLETELY AND THOROUGHLY UNDERSTAND THEM BEFORE DOING ANYTHING.
CALL CHASSISWORKS TECH SUPPORT (916) 388-0288 IF YOU NEED ASSISTANCE.

INSTALLATION GUIDE



7060-F10

Front Struts for 1967-69 Camaro and Firebird



Description: Tubular forward struts with Gemini-connector attachment to factory or aftermarket subframes. Includes firewall mounts, strut tubes, Gemini connector and clevis assemblies. Trimming and welding required to achieve best fit.

PARTS LIST

7060-F1-M – Front Struts, Mild Steel

Qty	Part Number	Description
1	300-3004	Hardware box
1	4870-14-3	Front strut, '67-69 Camaro, driver side, mild steel
1	4870-15-3	Front strut, '67-69 Camaro, passenger side, mild steel
1	5918-126 (optional)	Stainless Steel Spuds (pair)

300-3004 - Hardware Box

2	1103	Weld clevis 1.355" x 1/2" hole
2	1146	Gemini connector, plug flat
2	1150	Gemini connector, receiver, 1.625" x .134 wall tube
2	2839	Firewall tab 3/8" thick x 1/2" hole
2	3100-050F2.25Y	Bolt 1/2-20 x 2-1/4" hex cap screw
2	3101-050-20C	Locknut 1/2-20 nylon insert
4	3103-031F1.25C	Socket head allen 5/16-24 x 1-1/4"
4	3108-031H-S	High collar lockwasher 5/16"
2	7972-2120	Firewall solid support doubler F10

7060-F1-A – Front Struts 4130

Qty	Part Number	Description
1	300-3005	Hardware box
1	4870-14-4	Front strut, '67-69 Camaro, driver side, 4130
1	4870-15-4	Front strut, '67-69 Camaro, passenger side, 4130
1	5918-126 (optional)	Stainless Steel Spuds (pair)

300-3005 - Hardware Box

2	1146	Gemini connector, plug flat
2	1151	Gemini connector, receiver, 1.625" x .083 wall tube
2	1160	Weld clevis 1.455" x 1/2" hole
2	2839	Firewall tab 3/8" thick x 1/2" hole
2	3100-050F2.25Y	Bolt 1/2-20 x 2-1/4" hex cap screw
2	3101-050-20C	Locknut 1/2-20 nylon insert
4	3103-031F1.25C	Socket head allen 5/16-24 x 1-1/4"
4	3108-031H-S	High collar lockwasher 5/16"
2	7972-2120	Firewall solid support doubler F10

INSTRUCTIONS

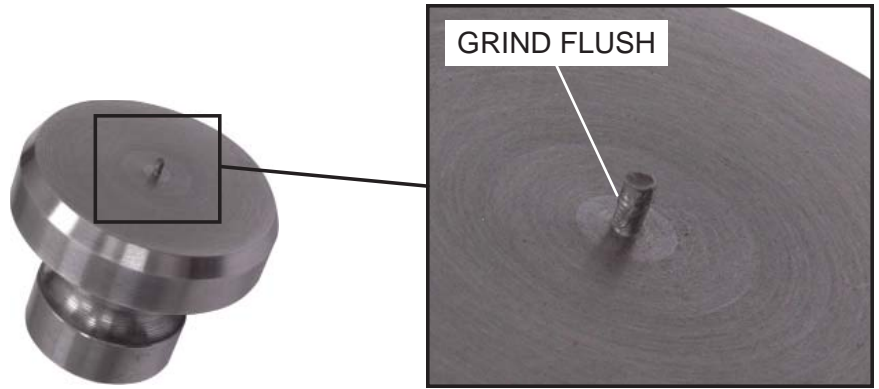
1. Position the firewall doubler plate on the passenger side as shown.
2. Use a disk sander to remove any paint from the area the doubler plate will be welded.
3. Tack weld the doubler plate to the firewall.



4. Tack weld the firewall tab to the double plate.
5. Bolt the weld clevis to the tab.



6. The alignment pin on the base of the joint plug is not used in this application and must be ground flush.



7. Set the joint receiver over the joint plug and secure with the 5/16-24 x 1-1/4" socket head cap screws and high-collar lockwashers.
8. Insert the joint receiver into the front of the forward strut.



9. Position the strut assembly on the subframe and along side the weld clevis on the firewall plate. The strut tube is purposely oversized so it can be trimmed to fit as needed. Adjustments to the length, angle, and height can be made by trimming the ends.



10. Once you have determined the location of the strut assembly on the subframe, use a disc sander with a scotch-brite pad to expose bare metal before welding.



11. Tack weld the joint plug base to the subframe. **Do not fully weld at this time.**



12. Mark the forward strut to be trimmed at the firewall weld clevis.
13. Cut the forward strut to length and slide the weld clevis into the firewall end.



14. Bolt the weld clevis to the firewall tab. Double check for proper clearance around the inner fender, headers, and hood hinge. Make any necessary adjustments.

15. Remove the strut tube. Drill two 1/4" holes through the tube at the firewall clevis end, 180 degrees apart for rosette welds.

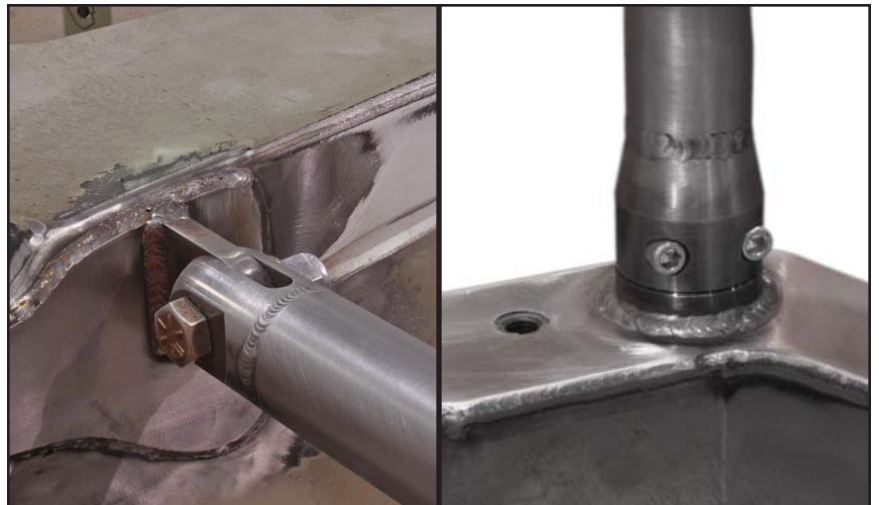


16. Fully weld the doubler plate and firewall tab.

17. Fully weld the Gemini plug to the subframe.

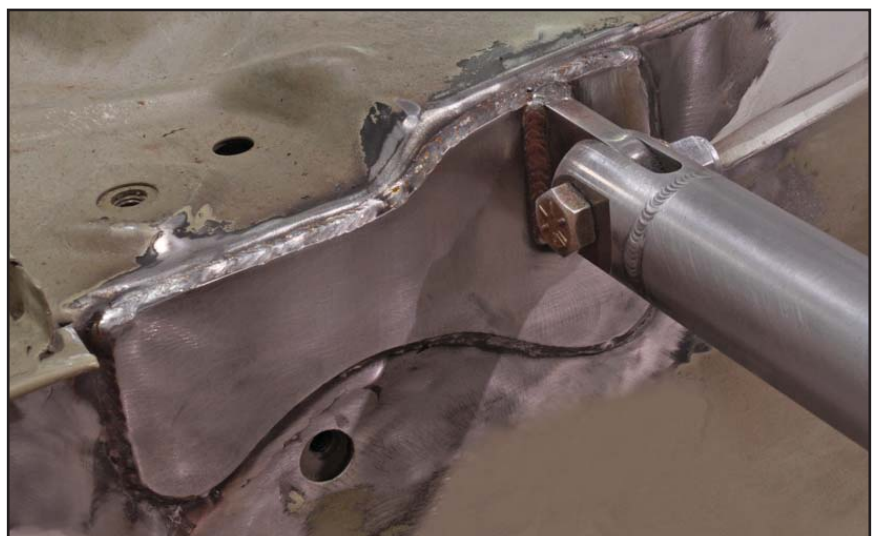
18. Reinstall the strut tube and bolt the firewall clevis in place.

19. Plug weld the strut tube rosette holes first and wait for them to cool down. This will prevent the clevis from pulling in and the strut being too short after welding.



20. Weld around the clevis tube joint. Wait for it to cool down before removing.

21. This procedure minimizes distortion of the strut from welding. In some cases a rat tail file will need to be used to elongate the hole in the firewall tab to make it easier to install the bolt or spuds.



22. Repeat this procedure for the driver side. This shows the position of the driver side double plate on the firewall.



23. Both strut assemblies installed.



WARRANTY NOTICE:

There are NO WARRANTIES, either expressed or implied. Neither the seller nor manufacturer will be liable for any loss, damage or injury, direct or indirect, arising from the use or inability to determine the appropriate use of any products. Before any attempt at installation, all drawings and/or instruction sheets should be completely reviewed to determine the suitability of the product for its intended use. In this connection, the user assumes all responsibility and risk. We reserve the right to change specification without notice. Further, Chris Alston's Chassisworks, Inc., makes **NO GUARANTEE** in reference to any specific class legality of any component. **ALL PRODUCTS ARE INTENDED FOR RACING AND OFF-ROAD USE AND MAY NOT BE LEGALLY USED ON THE HIGHWAY.** The products offered for sale are true race-car components and, in all cases, require some fabrication skill. **NO PRODUCT OR SERVICE IS DESIGNED OR INTENDED TO PREVENT INJURY OR DEATH.**

Chris Alston's Chassisworks
8661 Younger Creek Drive
Sacramento, CA 95828
Phone: 916-388-0288
Technical Support: sales@cachassisworks.com

