

READ ALL INSTRUCTIONS COMPLETELY AND THOROUGHLY UNDERSTAND THEM BEFORE DOING ANYTHING.
CALL CHASSISWORKS TECH SUPPORT (916) 388-0288 IF YOU NEED ASSISTANCE.

INSTALLATION GUIDE



5904-X10 g-Connector Center Support 1962-67 Chevy II / Nova

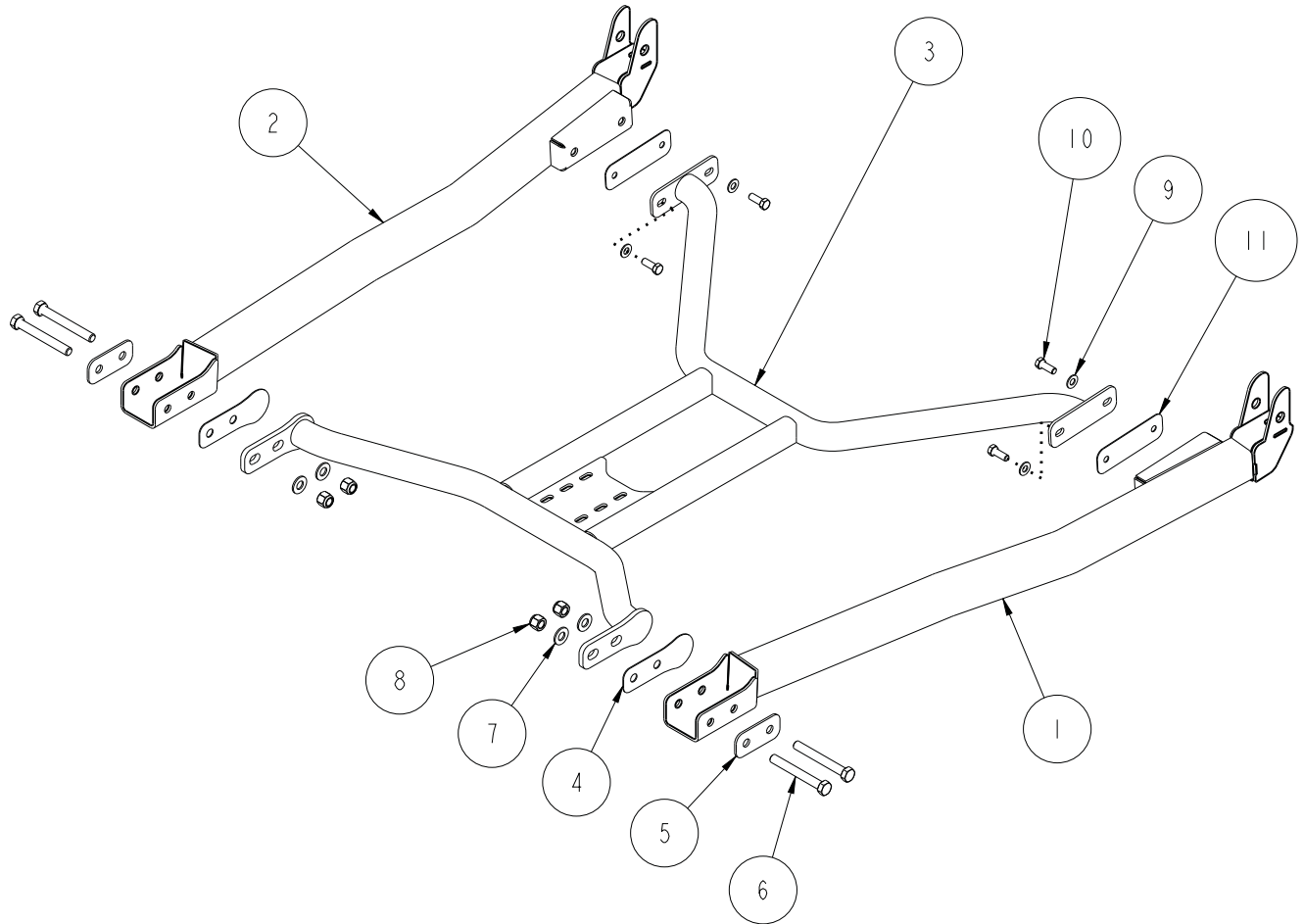


Description: Bolt-in subframe center support connects left and right subframe connectors.

Applications: Chevy II / Nova '62-67

Notes: Installation of subframe connectors required; modification to exhaust may be required.

ITEM	QTY	PART NO.	DESCRIPTION
1	1	7959-0251	SUBFRAME CONNECTOR WELDMENT, DRV, WELD-ON, 62-67 CHEVY II / NOVA
2	1	7959-0257	SUBFRAME CONNECTOR WELDMENT, PSGR, WELD-ON, 62-67 CHEVY II / NOVA
3	1	7959-0260	CENTER SUPPORT WELDMENT, 62-67 CHEVY II / NOVA
4	2	7962-0096	SHIM, CENTER SUPPORT, 67-81 CAMARO/FIREBIRD
5	2	7962-0097	MOUNTING PLATE, OUTBOARD, CENTER SUPPORT, 67-81 CAMARO/FIREBIRD
6	4	3100-050F4.00Y	HEX BOLT, 1/2-20 x 4, GRADE 8, YELLOW ZINC
7	4	3120-050S-Y	FLAT WASHER, 1/2 SAE, HARDENED, YELLOW ZINC
8	4	3101-050-20C	LOCKNUT, 1/2-20, GRADE 5, NYLON INSERT, CLEAR ZINC
9	4	3120-038S-Y	FLAT WASHER, 3/8 SAE, HARDENED, YELLOW ZINC
10	4	3100-038C1.00Y	HEX BOLT, 3/8-16 x 1, GRADE 8, YELLOW ZINC
11	2	7908-058	SHIM, 1/16 CENTER SUPPORT, TCP



DESCRIPTION		CENTER SUPPORT, 62-67 CHEVY II / NOVA	
Chris Aston's CHASSISWORKS INC. 8661 YOUNGER CREEK DRIVE SACRAMENTO, CA 95828 (916) 388-0288 FAX 388-0295		PART NO.	5904-X10
		2/23/15	DWG: 7951-5904X10

PARTS LIST

5904-X10 - Center Support 62-67 Chevy II / Nova

Qty	Part Number	Description
1	7959-0260	Center support weldment
1	7950-5904X10	Hardware Bag

7950-5904X10 - Hardware Bag

4	3100-038C1.00Y	Bolt 3/8-16 x 1" hex head cap screw
4	3100-050F4.00Y	Bolt 1/2-20 x 4" hex head cap screw
4	3101-050-20C	Locknut 1/2-20 nylon insert
4	3108-038L-C	Lock washer 3/8"
4	3120-038S-Y	Washer 3/8" hardened flat SAE
4	3120-050S-Y	Washer 1/2" hardened flat SAE
2	7908-058	Center support shim 1/16" thick (rear)
2	7908-062	Center support shim 1/8" thick (rear)
6	7962-0096	Center support shim 1/16" thick (front)
2	7962-0097	Center support outboard plate (front)

INSTRUCTIONS

The connectors must be installed before proceeding.

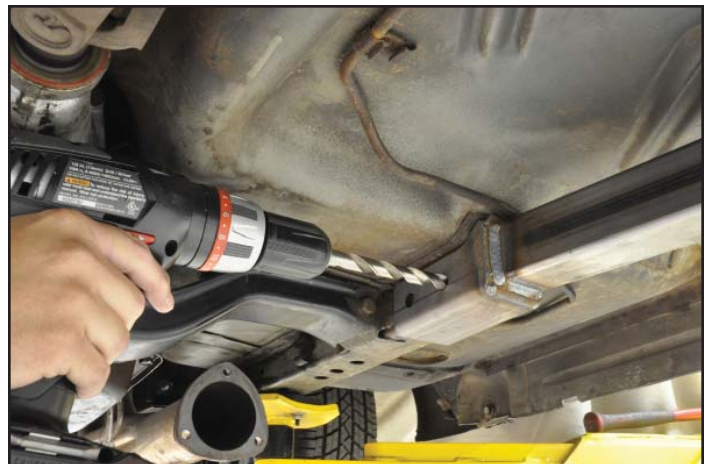
Exhaust Modification:

If the exhaust is currently installed on the vehicle, test fit the center support to check for clearance. If the center support does not clear, the exhaust must be modified. There is sufficient room available with the center support installed to use long tube headers with 'H' or 'X' pipe and dual 3" exhaust.

1. Remove exhaust and proceed with installation. Center support and driveshaft must be installed during exhaust fabrication. Leave adequate clearance for the driveshaft throughout the rear suspension's range of travel.
2. Raise and safely support the vehicle with the subframe connectors unobstructed and with enough room to work underneath.
3. Measure the distance between the inside edges at the front and rear of the subframe connectors. The width must be greater than the minimums listed below. The included shims are used to take up any slack.

Front Minimum: 27-1/2"

Rear Minimum: 32-1/2"



4. Drill 1/2" holes completely through the front frame rail using the subframe connector mount as a guide.
5. Chase the 3/8-16 threads at the rear mounting box on both subframe connectors.

6. Insert a mounting bolt through the rectangular two-hole mounting plate. The mounting plate is the outboard washer.
7. Raise the front of the center support into position and insert only the forwardmost bolt through each subframe connector and then through the center support tab.
8. Swing the center support up until the rear tabs are in line with frame connector brackets.
9. Slide a lockwasher followed by a flat washer onto the 3/8" hex bolts and thread them into the frame-connector.
10. If the side clearance between the center support and the subframe connectors is greater than 1/16", use the supplied shims.
11. The shims can be easily installed by backing out one bolt at a time and inserting the shim.
12. Once any necessary shims are in place, slide flat washers over the front hex bolts followed by locknuts. Slide the flat washers and lockwashers over the rear hex bolts and tighten all 1/2" hardware to 45 lb-ft and 3/8" hardware to 30 lb-ft.
13. The installation is complete.



WARRANTY NOTICE:

There are NO WARRANTIES, either expressed or implied. Neither the seller nor manufacturer will be liable for any loss, damage or injury, direct or indirect, arising from the use or inability to determine the appropriate use of any products. Before any attempt at installation, all drawings and/or instruction sheets should be completely reviewed to determine the suitability of the product for its intended use. In this connection, the user assumes all responsibility and risk. We reserve the right to change specification without notice. Further, Chris Alston's Chassisworks, Inc., makes **NO GUARANTEE** in reference to any specific class legality of any component. **ALL PRODUCTS ARE INTENDED FOR RACING AND OFF-ROAD USE AND MAY NOT BE LEGALLY USED ON THE HIGHWAY.** The products offered for sale are true race-car components and, in all cases, require some fabrication skill. **NO PRODUCT OR SERVICE IS DESIGNED OR INTENDED TO PREVENT INJURY OR DEATH.**

Chris Alston's Chassisworks
 8661 Younger Creek Drive
 Sacramento, CA 95828
 Phone: 916-388-0288
 Technical Support: sales@cachassisworks.com

