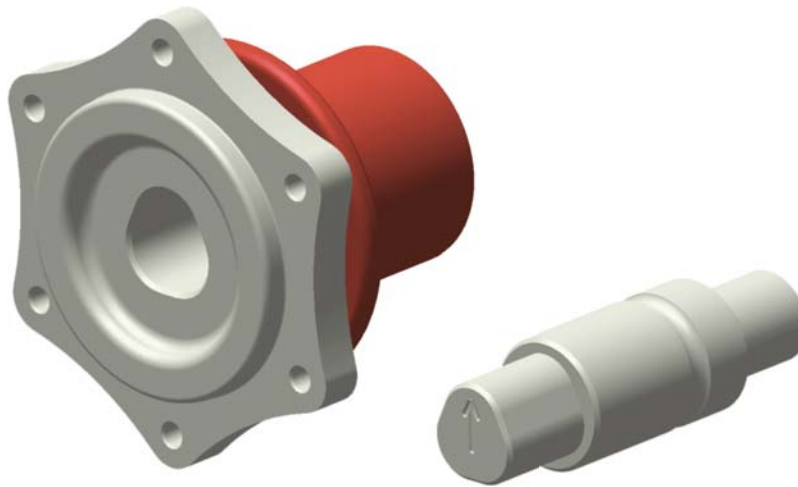


READ ALL INSTRUCTIONS COMPLETELY AND THOROUGHLY UNDERSTAND THEM BEFORE DOING ANYTHING. CALL CHASSISWORKS TECH SUPPORT (916) 388-0288 IF YOU NEED ASSISTANCE.



6169
Quick Release Steering Hub for
6-Hole Bolt-On Steering Wheel
Installation Guide

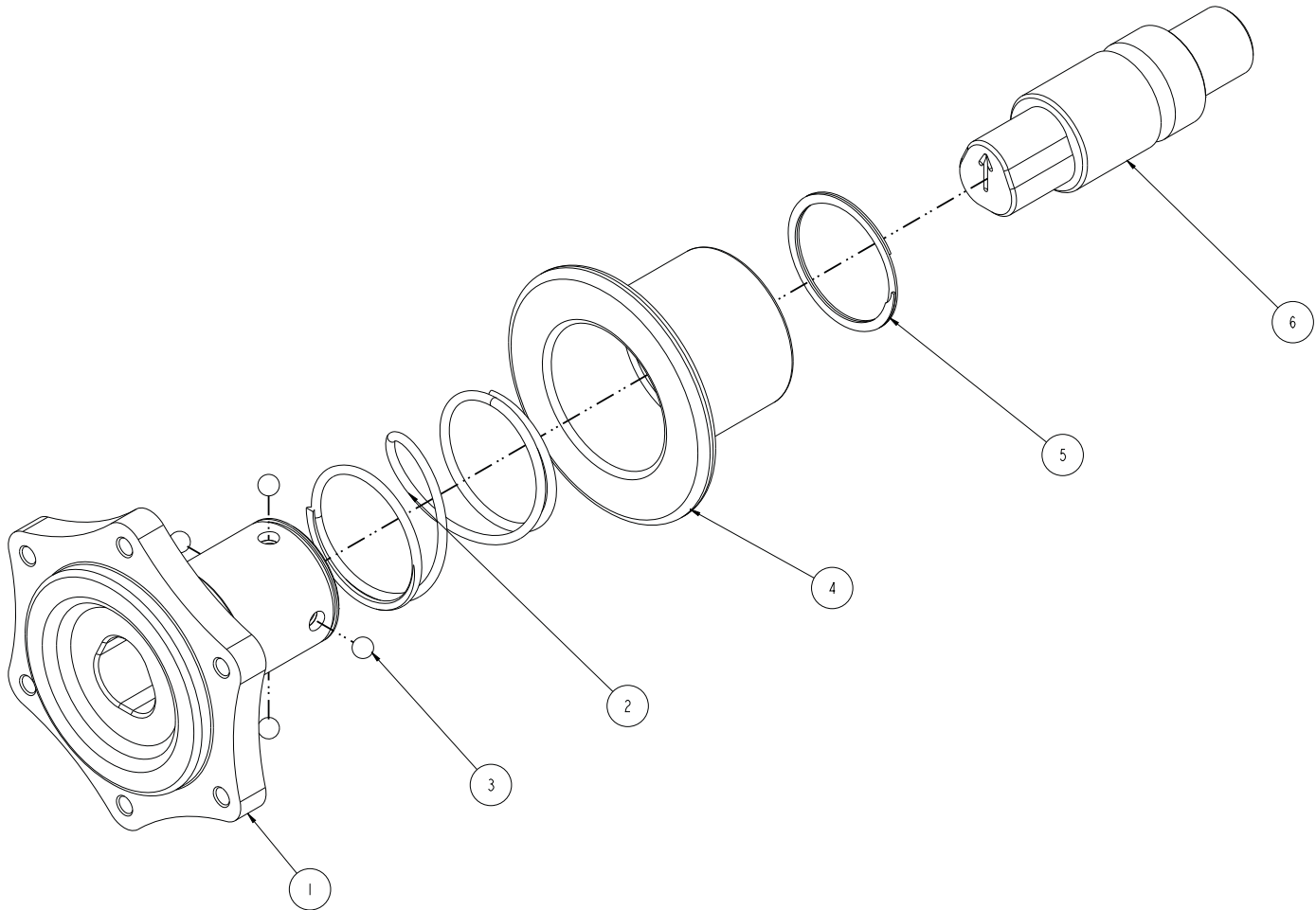


NOTE: This hub fits most 10-32 bolt 6-hole steering wheels (MOMO) with a 2-3/4" bolt circle. The shaft adapter is designed to attach to a 3/4" x .049" 4130 tube. Use 1/4-20 x 3/4" long Grade 8 bolts (not provided) to attach steering wheel.

THIS DRAWING CONTAINS PROPRIETARY INFORMATION OF CHRIS ALSTON'S CHASSISWORKS, INC. AND SHALL NOT BE REPRODUCED, TRANSFERRED TO OTHER DOCUMENTS, DISCLOSED TO OTHERS, USED FOR MANUFACTURING, OR FOR ANY OTHER PURPOSES, IN WHOLE OR IN PART WITHOUT PRIOR WRITTEN PERMISSION OF CHRIS ALSTON'S CHASSISWORKS, INC.

PART NO. **6169** SHEET **1** REV. **0**

REVISIONS				
ZONE	REV	DESCRIPTION	DATE	APPROVED



ITEM	QTY	PART NO.	DESCRIPTION
1	1	1338	STEERING HUB, MOMO 6 BOLT, QUICK RELEASE, 70MM BOLT CIRCLE
2	1	3627	SPRING
3	4	899-018-188	STAINLESS STEEL BALL
4	1	1321	LOCK COLLAR, QUICK RELEASE STEERING HUB
5	1	3183-RS-1.127	RETAINING RING
6	1	1228	STEERING SHAFT 3/4 POLYGON ADAPTER
UNLESS OTHERWISE SPECIFIED		APPROVALS	DATE
DIMENSIONS ARE IN INCHES		DRAWN BY:	9/3/13
FRACTIONS TOLERANCES		S. RIEGER	
ANGLES DECIMAL		CHECKED BY:	9/3/13
±1/16 ±0.5° ±0.1		S. RIEGER	
±0.05 ±0.01		DWG RELEASE LEVEL:	In Work
±0.005 ±0.0010			
FINISH		DESCRIPTION	
NONE		Q/R COLLAR HUB	
MATERIAL		MOMO 6 HOLE 70MM BOLT CIRCLE	
ASSEMBLY		Chris Alston's CHASSISWORKS INC. 8661 YOUNGER CREEK DRIVE SACRAMENTO, CA 95828 (916) 388-0288 FAX 388-0295	
SIZE	PART NO.	PART REV.	
B	6169	0	
SCALE: 1:1	DWG: 6169	REV: 0.1	SHEET 1 OF 1

PARTS LIST

6169- Quick Release Steering Hub for 6-Hole Bolt-On Steering Wheel

Part Number	Qty.	Description
1228	1	Steering shaft 3/4" polygon
Parts below are assembled:		
1338	1	Steering hub 6-hole quick release
1321	1	Collar quick-release steering hub
3183-RR-1.127	1	Spirolox
3627	1	Spring
899-018-188	4	Stainless-steel ball

INSTRUCTIONS

1. Before installing the hub, center the steering rack or steering box using the following technique: Turn the input shaft all the way one direction until in stops. Turn it in the opposite direction counting the number of turns until the rack or box stops again. Divide the number of turns by 2 and turn the steering rack or box back that number of turns, it will now be centered. Example: If the number of turns from lock to lock is 4-½, you would turn the rack or steering box back 2-¼ turns to center it.
2. The 3/4" steering shaft tube should extend past the column mounting tube 1". Drill a 1/4" diameter hole 1/2" from the end of the steering shaft tube through both walls. This will give you two holes to rosette weld through later.
3. Insert the steering shaft adapter into the hub. This is done by compressing the locking collar against the back of the steering hub. The polygon shape of the steering shaft adapter will only allow you to install it rotated one way. Make sure it is fully inserted and locked in place. Attach the steering hub to your steering wheel with the top of the wheel above the arrow on the steering shaft adapter.
4. Insert the steering shaft adapter, with quick release hub and steering wheel attached, into the 3/4" steering shaft tube. Rotate the steering wheel until the arrow on the steering shaft adapter is pointing straight up at 12 o'clock.
5. Tack weld the steering shaft adapter through the 2 rosettes to the steering shaft tube. Carefully remove the steering hub and steering wheel by compressing the lock collar against the back of the hub. Remove the steering shaft from the mounting tube so the bushing will not be damaged during welding. Finish welding the two rosettes first. This is done by completely welding the holes, making sure to penetrate the steering shaft adapter when welding. Next, weld the perimeter where the shaft adapter meets the end of the 3/4" steering shaft tube.



OPERATION TIPS

6. When reinstalling the steering wheel at the track, remember to look for the arrow on the steering shaft and rotate the top of the steering wheel to align with the arrow. This is easier to do if you get in the habit of only removing the steering wheel with the top of the wheel at 12 o'clock.
7. The most effective way to compress the locking collar is to put your thumbs on the center of the steering wheel, reach through the steering wheel spokes, put your fingers on the lock collar, and squeeze the collar to release the steering wheel.
8. After reinstallation, give a firm tug on the steering wheel to confirm that it is properly latched.

WARRANTY NOTICE:

There are NO WARRANTIES, either expressed or implied. Neither the seller nor manufacturer will be liable for any loss, damage or injury, direct or indirect, arising from the use or inability to determine the appropriate use of any products. Before any attempt at installation, all drawings and/or instruction sheets should be completely reviewed to determine the suitability of the product for its intended use. In this connection, the user assumes all responsibility and risk. We reserve the right to change specification without notice. Further, Chris Alston's Chassisworks, Inc., makes **NO GUARANTEE** in reference to any specific class legality of any component. **ALL PRODUCTS ARE INTENDED FOR RACING AND OFF-ROAD USE AND MAY NOT BE LEGALLY USED ON THE HIGHWAY.** The products offered for sale are true race-car components and, in all cases, require some fabrication skill. **NO PRODUCT OR SERVICE IS DESIGNED OR INTENDED TO PREVENT INJURY OR DEATH.**

Chris Alston's Chassisworks
8661 Younger Creek Drive
Sacramento, CA 95828
Phone: 916-388-0288
Technical Support: tech@cachassisworks.com

