

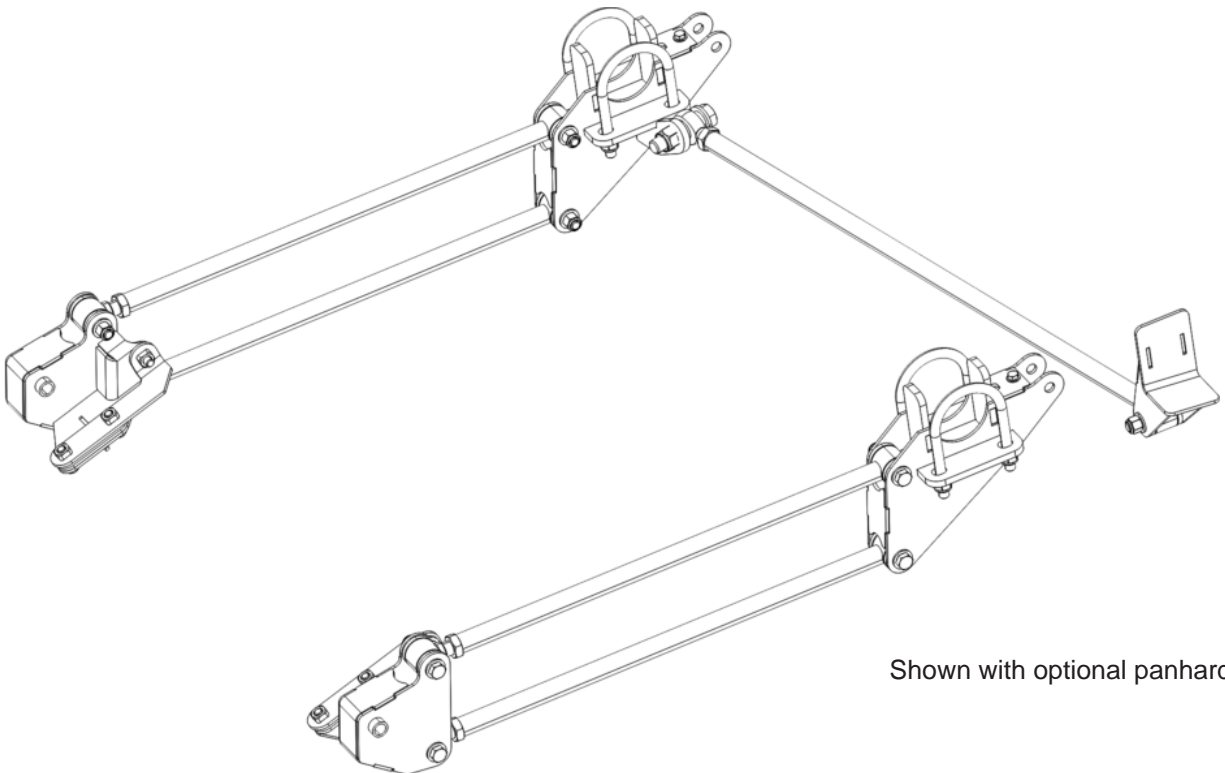
READ ALL INSTRUCTIONS COMPLETELY AND THOROUGHLY UNDERSTAND THEM BEFORE DOING ANYTHING.
CALL KP COMPONENTS TECH SUPPORT (916) 388-0288 IF YOU NEED ASSISTANCE.

INSTALLATION GUIDE



KPC 4LBO-C81

Bolt-On 4-Link Kit
2007-2015 Chevrolet Silverado and GMC Sierra



Shown with optional panhard bar.

Description: Bolt-on, urethane-bushed 4-link rear suspension for 2007-2015 Chevrolet Silverado and GMC Sierra pickup . Includes bolt-on frame- and axle-brackets, adjustable-length suspension links, urethane end bushings, and mounting hardware.

Note: Requires panhard bar (shown above) or Watt's link locator for operation.

PARTS LIST

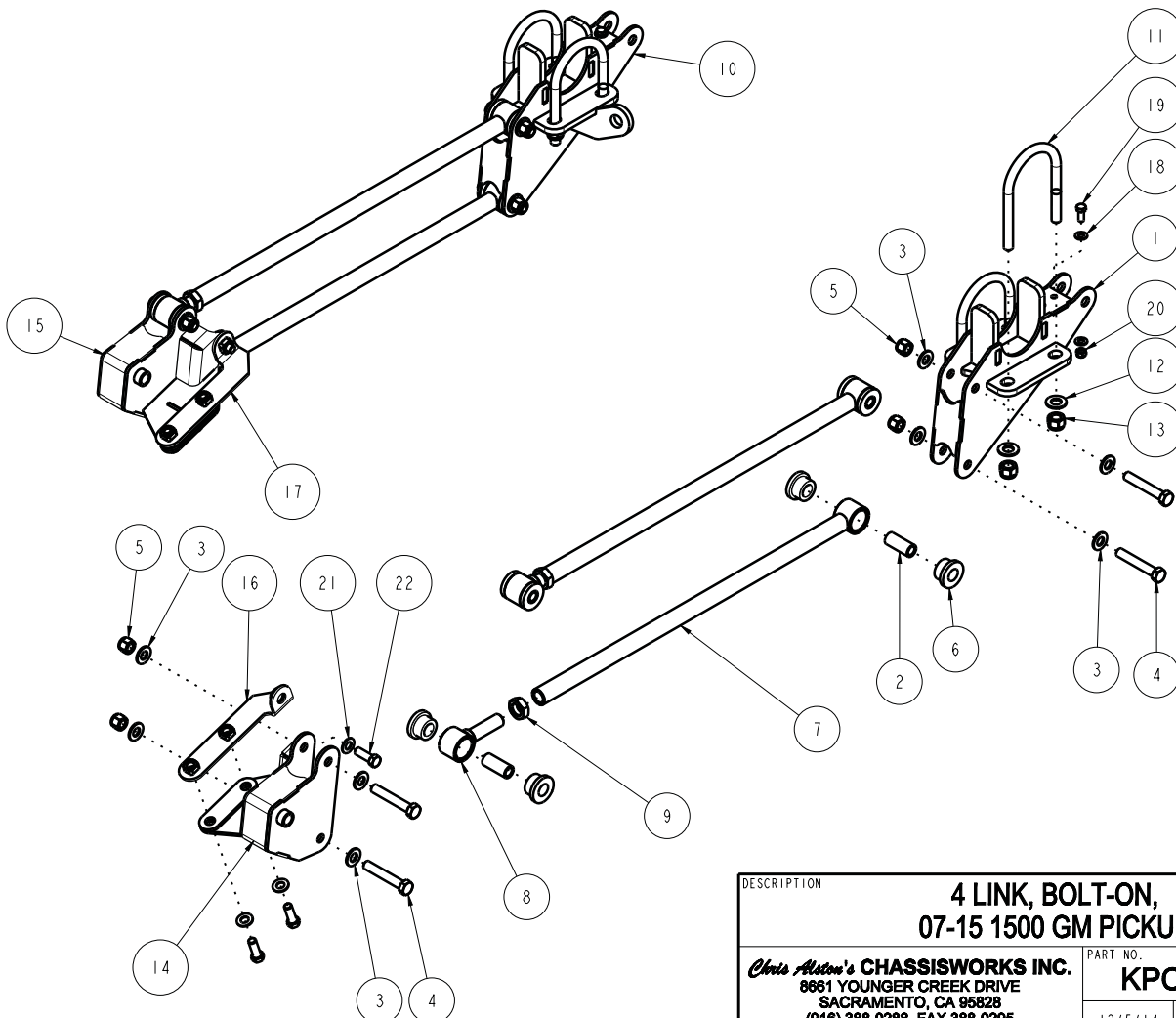
KPC 4LBO-C81 - Bolt-on 4-Link Suspension, 2007-15 Chevrolet and GM Pickup

Qty	Part Number	Description
4	7930-011-25.70	Link bar weldment 25.70 OAL x 3/4-16 RH x 90° - 1.25 bore poly housing
1	7930-212	4-link frame mount driver side weldment
1	7930-213	4-link frame mount passenger side weldment
1	7930-222	Frame mount nut plate driver side
1	7930-223	Frame mount nut plate passenger side
1	7930-226	4- link axle mount driver side weldment
1	7930-227	4-link axle mount passenger side weldment with panhard bar tab

7926-4LBOC81 - Hardware Bag

Qty	Part Number	Description
2	3100-031F0.75Y	Bolt, 5/16-24 x 3/4 hex head cap screw, Grade 8
6	3100-044C1.25Y	Bolt 7/16-14 x 1-1/4" hex head cap screw, Grade 8
8	3100-050C3.00Y	Bolt 1/2-13 x 3" hex head cap screw
2	3101-031-24C	Locknut 5/16-14 nylon insert
8	3101-050-13C	Locknut 1/2-13 nylon insert
4	3102-075-16RC	Jam nut 3/4-16 RH Grade 5, clear zinc
8	3120-056S-Y	Washer 9/16" hardened SAE flat
8	3131-056-18Y	Locknut 9/16-18 nylon insert Grade NE8, yellow zinc
8	3140-1624-056	Sleeve 1/2 ID x 3/4 OD x 1-3/4" long
16	3141-2440-0.88	Poly bushing .75 bore x .875" OAL
4	3147-300.56-525	U-bolt 9/16-18 x 5-1/4" long for 3" round tube
2	3151-1/2OZ	Poly lube 1/2 oz. cup
4	3157-031S-C	Washer 5/16" SAE flat, plated
6	3157-044S-C	Washer 7/16" SAE flat, plated
16	3157-050S-C	Washer 1/2" SAE flat, plated
4	7930-003	Poly eye 3/4-16 RH weldment

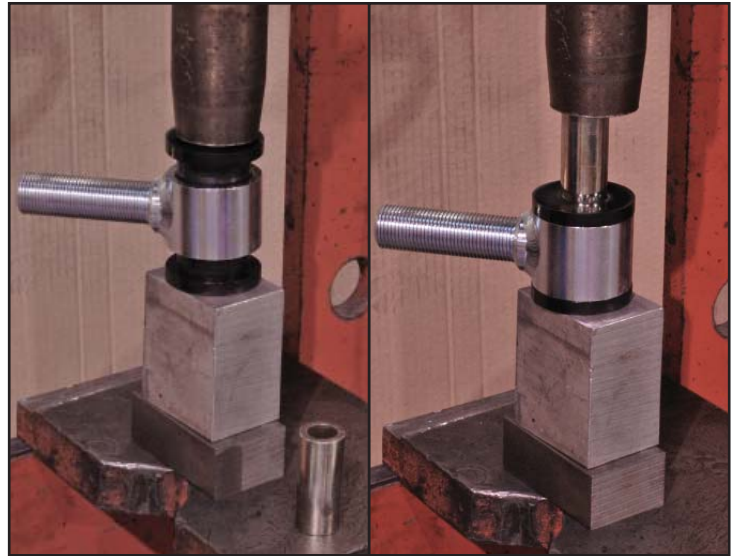
ITEM	QTY	PART NO.	DESCRIPTION
1	1	7930-226	AXLE BRACKET WELDMENT #226, DRIVER, 4-LINK, 07-15 GM 1500
2	8	3140-1624-056	SLEEVE, POLY BUSHING, $\varnothing 3/4$ x .50 x 1.750
3	16	3157-050S-C	WASHER, 1/2 SAE, ZINC PLATED, 1/2 ID x 1 1/16 OD x 3/32 THICK
4	8	3100-050C3.00Y	HEX BOLT, 1/2-13 x 3, GRADE 8, YELLOW ZINC
5	8	3101-050-13C	LOCKNUT 1/2-13, GRADE 5, NYLON INSERT, CLEAR ZINC
6	16	3141-2440-0.88	POLYURETHANE BUSHING 1.63 x .750 x .750
7	4	7930-011-25.70	LINK BAR WELDMENT, 25.70 OAL, 3/4-16 x 90°, 1.25 ID POLY
8	4	7930-003	POLY EYE WELDMENT, 3/4-16 x 1 1/4 BORE
9	4	3102-075-16RC	JAM NUT, 3/4-16 RIGHT, CLEAR ZINC
10	1	7930-227	AXLE BRACKET WELDMENT #226, PSGR, 4-LINK, 07-15 GM 1500
11	4	3147-325.56-550	U-BOLT, AXLE TUBE, 9/16-18 x 3.25 x 5.50
12	8	3120-056S-Y	FLAT WASHER, 9/16 SAE, HARDENED, YELLOW ZINC
13	8	3131-056-18Y	LOCKNUT, 9/16-18, GRADE 8, NYLON INSERT, YELLOW ZINC
14	1	7930-212	FRAME MOUNT WELDMENT #212, DRIVER, 4-LINK, 07-15 GM 1500
15	1	7930-213	FRAME MOUNT WELDMENT #212, PSGR, 4-LINK, 07-15 GM 1500
16	1	7930-222	BRACKET ASSEMBLY #222, DRIVER, 4-LINK, 07-15 GM 1500
17	1	7930-223	BRACKET ASSEMBLY #223, 4-LINK, 07-15 GM 1500
18	4	3157-031S-C	WASHER, 5/16 SAE, ZINC PLATED, 11/32 ID x 7/8 OD x 1/16 THICK
19	2	3100-031F0.75Y	HEX BOLT, 5/16-24 x 3/4, GRADE 8, YELLOW ZINC
20	2	3101-031-24C	LOCKNUT 5/16-24, GRADE 5, NYLON INSERT, CLEAR ZINC
21	6	3157-044S-C	WASHER, 7/16 SAE, ZINC PLATED, 7/16 ID x 1 1/8 OD x 1/16 THICK
22	6	3100-044CI.25Y	HEX BOLT, 7/16-14 x 1 1/4, GRADE 8, YELLOW ZINC



DESCRIPTION		4 LINK, BOLT-ON, 07-15 1500 GM PICKUP	
Chris Alton's CHASSISWORKS INC. 8681 YOUNGER CREEK DRIVE SACRAMENTO, CA 95828 (916) 388-0288 FAX 388-0295		PART NO. KPC 4LBO-C81	
		12/5/14	DWG: 7927-4LBO-C81

1. Raise the truck and support with jack stands placed under the frame between the cab and forward leaf-spring mounting brackets.
2. Remove the bed and the rear bumper.
3. Support the axle housing under the frame on jack stands with the suspension hanging, there should be no weight on the leaf springs.
4. Unbolt the leaf springs from chassis and axle housing, remove all stock suspension components.
5. Bolt the driver side front 4-link bracket into the front leaf-spring hanger reusing the factory hardware. The bolt goes through the sleeved hole of the bracket and the extension along the inside will rest against the frame rail.
6. Using the positioned bracket as a guide, drill the three 7/16" holes through the frame rail.
7. Insert the weld-nut plate through the access hole and secure with 7/16" hardware. Tighten to 30-35 lb-ft.
8. Tighten leaf-spring bolt to factory specs.

9. Insert two poly bushings into each 4-link eye.
10. Apply poly lube to the inside of the bushings and outside of the steel sleeves.
11. Press the steel sleeves into the bushings until they are centered.

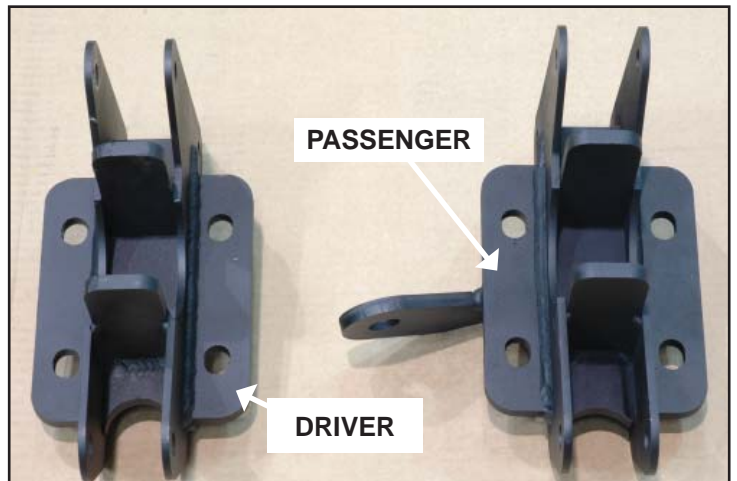


12. Use a 3/4-16 tap and die to chase the threads of the poly eyes and 4-link bars.
13. Thread the 3/4-16 jam nuts onto the threaded eyes until there are 4-5 threads remaining between the jam nut and the shoulder.
14. Apply a small amount of anti-seize to the male threads and screw it into the link bar until the jam nut contacts the tube.
15. The center-to-center length of the link bar must measure 26-3/4".

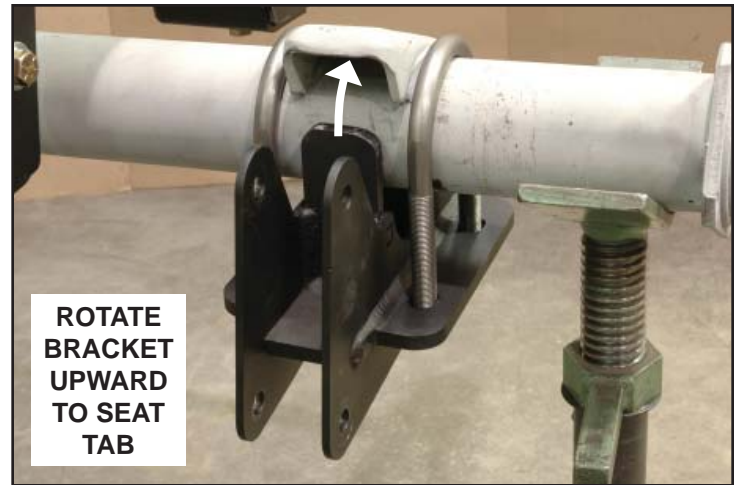


16. These are the 4-link axle brackets. The passenger-side mount has the panhard bar mounting tab.

Brackets shown may differ slightly from your exact application.



17. Loosely bolt the 4-link bracket to the axle housing using the U-bolts, hardened washers, and locknuts.
18. Rotate the bracket to seat the large tab at the front of the bracket against the leaf-spring pad.
19. Tighten the U-bolts evenly to 60 lb-ft.
20. Install the 4-link bars with the adjustable eyes closest to the frame brackets.
21. The 1/2-13 x 3" hex bolts, flat washers, and locknuts are used on the frame and axle mounts. There should be a flat washer under each bolt head and locknut. Torque to 45 lb-ft.
22. Repeat procedure for the passenger side of the truck.



WARRANTY NOTICE:

There are NO WARRANTIES, either expressed or implied. Neither the seller nor manufacturer will be liable for any loss, damage or injury, direct or indirect, arising from the use or inability to determine the appropriate use of any products. Before any attempt at installation, all drawings and/or instruction sheets should be completely reviewed to determine the suitability of the product for its intended use. In this connection, the user assumes all responsibility and risk. We reserve the right to change specification without notice. Further, Chris Alston's Chassisworks, Inc., makes **NO GUARANTEE** in reference to any specific class legality of any component. **ALL PRODUCTS ARE INTENDED FOR RACING AND OFF-ROAD USE AND MAY NOT BE LEGALLY USED ON THE HIGHWAY.** The products offered for sale are true race-car components and, in all cases, require some fabrication skill. **NO PRODUCT OR SERVICE IS DESIGNED OR INTENDED TO PREVENT INJURY OR DEATH.**

KP Components
A Chris Alston's Chassisworks Inc., Brand
8661 Younger Creek Drive
Sacramento, CA 95828
Technical Support: KPtech@cachassisworks.com

