

**READ ALL INSTRUCTIONS COMPLETELY AND THOROUGHLY UNDERSTAND THEM BEFORE DOING ANYTHING.
CALL KP COMPONENTS TECH SUPPORT (916) 388-0288 IF YOU NEED ASSISTANCE.**

INSTALLATION GUIDE



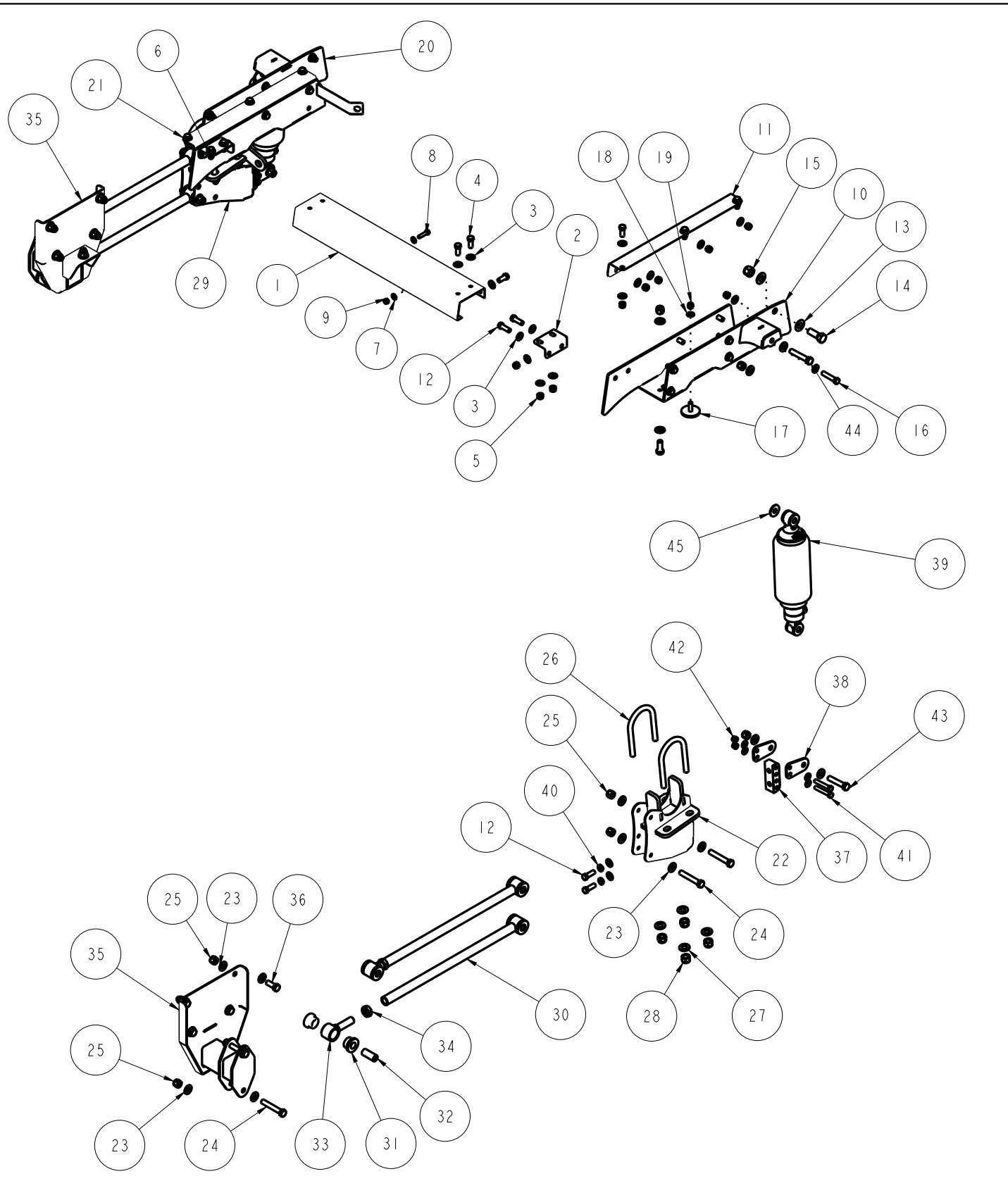
KPC 4LAS-C51 **Bolt-On 4-Link Air-Spring System** **1973-1987 Chevrolet C10 and GMC Pickup**



Description:

Bolt-on 4-link air-spring suspension system includes 4-link, frame and axle brackets, adjustable air-spring VariShocks and panhard bar locator. Optional double-adjustable shock valving and Watts link.

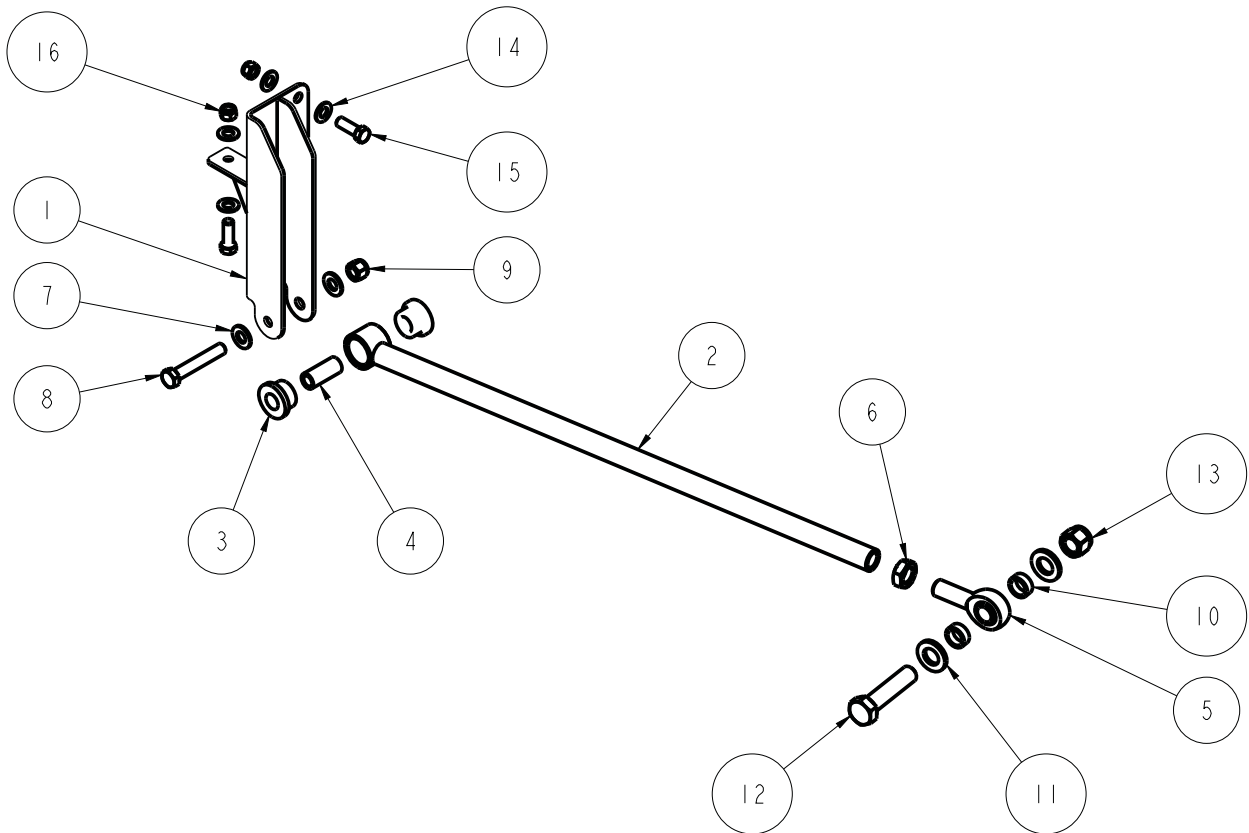
Part Number	Description	PDF Page
KPC 4LAS-C51	4-Link Suspension System, Bolt-On	2
KPC PH4T-C51	Panhard Bar, Bolt-On	4
Instructions included for components listed in chart.		



DESCRIPTION		4-LINK ASSEMBLY, AIR SHOCK, 73-87 CHEVROLET/GMC C10	
Chris Alston's CHASSISWORKS INC. 8661 YOUNGER CREEK DRIVE SACRAMENTO, CA 95828 (916) 388-0288 FAX 388-0295		PART NO. KPC 4LAS-C51	
		6/8/16	DWG: KPC_4LAS-C51

ITEM	QTY	PART NO.	DESCRIPTION
1	1	7930-246	NOTCH CROSSMEMBER, BOLT-ON, 73-87 CHEVROLET/GMC C10
2	1	7930-184	BRKT #184, NOTCH CROSSMEMBER, DRV, 63-72 CHEVROLET/GMC C10
3	72	3157-044S-C	WASHER, 7/16 SAE, ZINC PLATED, 7/16 ID x 1 1/8 OD x 1/16 THICK
4	29	3100-044C1.00Y	HEX BOLT, 7/16-14 x 1, GRADE 8, YELLOW ZINC
5	34	3101-044-14C	LOCKNUT 7/16-14, GRADE 5 NYLON INSERT, CLEAR ZINC
6	1	7930-185	BRKT #185, NOTCH CROSSMEMBER, PSGR, 63-72 CHEVROLET/GMC C10
7	2	3157-031S-C	WASHER, 5/16 SAE, ZINC PLATED, 11/32 ID x 7/8 OD x 1/16 THICK
8	1	3100-031C1.25Y	HEX BOLT, 5/16-18 x 1 1/4, GRADE 8, YELLOW ZINC
9	1	3101-031-18C	LOCKNUT 5/16-18, GRADE 5, NYLON INSERT, CLEAR ZINC
10	1	7930-236	NOTCH WELDMENT #236, DRV, 73-87 CHEVROLET/GMC C10
11	1	7930-244	SUPPORT BRKT #244, 4-LINK NOTCH, DRV, 73-87 CHEVROLET/GMC C10
12	8	3100-044C1.25Y	HEX BOLT, 7/16-14 x 1 1/4, GRADE 8, YELLOW ZINC
13	2	3157-063S-C	WASHER, 5/8 SAE, ZINC PLATED, 21/32 ID x 1 5/16 OD x 1/16 THICK
14	1	3100-063F1.75Y	HEX BOLT, 5/8-18 x 1 3/4, GRADE 8, YELLOW ZINC
15	1	3101-063-18C	LOCKNUT 5/8-18, GRADE 5, NYLON INSERT, CLEAR ZINC
16	1	3100-044C2.00Y	HEX BOLT, 7/16-14 x 2, GRADE 8, YELLOW ZINC
17	2	3173-03-08-32-S	BUMPSTOP, LOW PROFILE, 2.00 x .475, 3/8-16 x 1.13
18	10	3157-038S-C	WASHER, 3/8 SAE, ZINC PLATED, 13/32 ID x 13/16 OD x 1/16 THICK,
19	2	3101-038-16C	LOCKNUT 3/8-16, GRADE 5, NYLON INSERT, CLEAR ZINC
20	1	7930-237	NOTCH WELDMENT #237, PSGR, 73-87 CHEVROLET/GMC C10
21	1	7930-245	SUPPORT BRKT #245, 4-LINK NOTCH, PSGR, 73-87 CHEVROLET/GMC C10
22	1	7930-250	AXLE MOUNT, 4-LINK, DRV, 73-87 CHEVROLET/GMC C10
23	48	3157-050S-C	WASHER, 1/2 SAE, ZINC PLATED, 1/2 ID x 1 1/16 OD x 3/32 THICK
24	8	3100-050C3.00Y	HEX BOLT, 1/2-13 x 3, GRADE 8, YELLOW ZINC
25	24	3101-050-13C	LOCKNUT 1/2-13, GRADE 5, NYLON INSERT, CLEAR ZINC
26	4	3147-300.56-525	U-BOLT, AXLE TUBE, 9/16-18 x 3.00 x 5.25
27	8	3120-056S-Y	FLAT WASHER, 9/16 SAE, HARDENED, YELLOW ZINC
28	8	3131-056-18Y	LOCKNUT, 9/16-18, GRADE 8, NYLON INSERT, YELLOW ZINC
29	1	7930-251	AXLE MOUNT, 4-LINK, PSGR, 73-87 CHEVROLET/GMC C10
30	4	7930-011-21.70	LINK BAR WELDMENT, 21.70 OAL, 3/4-16 x 90° □, 1.25 ID POLY
31	16	3141-2440-0.88	POLYURETHANE BUSHING 1.63 x .750 x .750
32	8	3140-1624-056	SLEEVE, POLY BUSHING, □ n □ 3/4 x .50 x 1.750
33	4	7930-003	POLY EYE WELDMENT, 3/4-16 x 1 1/4 BORE
34	4	3102-075-16RC	JAM NUT, 3/4-16 RIGHT, CLEAR ZINC
35	2	7930-233	4-LINK WELDMENT #233, 73-87 CHEVROLET/GMC C10
36	12	3100-050C1.25Y	HEX BOLT, 1/2-13 x 1 1/4, GRADE 8, YELLOW ZINC
37	2	1562	SHOCK MOUNT, ADJUSTABLE, 63-72 CHEVROLET/GMC C10
38	4	2198	SHOCK MOUNT, ADJUSTABLE, □ n □ 3/8 HOLES ON 7/8 CENTERS
39	2	VAS 131K2-515	SHOCK WAVE, 4", CAP PORT, SA, 5.18 TRAVEL, POLY EYES, STD VALVING
40	4	3108-044L-C	LOCK WASHER, HELICAL SPRING □ n □ 7/16, STEEL, ZINC
41	4	3100-038F2.25Y	HEX BOLT, 3/8-24 x 2 1/4, GRADE 8, YELLOW ZINC
42	4	3101-038-24C	LOCKNUT, 3/8-24, GRADE 5, NYLON INSERT, CLEAR ZINC
43	2	3100-050C2.50Y	HEX BOLT, 1/2-13 x 2 1/2, GRADE 8, YELLOW ZINC
44	2	3100-050C2.75Y	HEX BOLT, 1/2-13 x 2 3/4, GRADE 8, YELLOW ZINC
45	2	899-044.51-1.36	STEEL WASHER □ n □ 1.360 x .510 ID x .105 THICK

ITEM	QTY	PART NO.	DESCRIPTION
1	1	7935-078	WELDMENT #78, PANHARD BAR MOUNT, 73-87 CHEVROLET/GMC C10
2	1	7935-013	PANHARD BAR WELD, 9° x 1.25 POLY 28.153 LONG x 3/4-16 THREAD
3	2	3141-2440-0.88	POLYURETHANE BUSHING 1.63 x .750 x .750
4	1	3140-1624-056	SLEEVE, POLY BUSHING, Ø3/4 x .50 x 1.750
5	1	3111-075X075-RT	ROD END, 3/4-16 RIGHT x 3/4 BORE, TEFLON, MTM-12
6	1	3102-075-16RC	JAM NUT, 3/4-16 RIGHT, CLEAR ZINC
7	2	3157-050S-C	WASHER, 1/2 SAE, ZINC PLATED, 1/2 ID x 1 1/16 OD x 3/32 THICK
8	1	3100-050C3.00Y	HEX BOLT, 1/2-13 x 3, GRADE 8, YELLOW ZINC
9	1	3101-050-13C	LOCKNUT 1/2-13, GRADE 5, NYLON INSERT, CLEAR ZINC
10	2	DI6.120-000.375	CUT TUBE, Ø1 x .120 WALL DOM x .375
11	2	3157-075S-C	WASHER, 3/4 SAE, ZINC PLATED, 13/16 ID x 1 15/32 OD x 5/32 THICK
12	1	3100-075F3.25Y	HEX BOLT, 3/4-16 x 3 1/4, GRADE 8, YELLOW ZINC
13	1	3101-075-16C	LOCKNUT 3/4-16, GRADE 5, NYLON INSERT, CLEAR ZINC
14	6	3157-044S-C	WASHER, 7/16 SAE, ZINC PLATED, 7/16 ID x 1 1/8 OD x 1/16 THICK
15	3	3100-044C1.25Y	HEX BOLT, 7/16-14 x 1 1/4, GRADE 8, YELLOW ZINC
16	3	3101-044-14C	LOCKNUT 7/16-14, GRADE 5 NYLON INSERT, CLEAR ZINC



DESCRIPTION	PANHARD BAR, TUBULAR, 4-LINK & TRAILING ARM, 73-87 CHEVROLET/GMC C10	
<i>Chris Alston's</i> CHASSISWORKS INC. 8661 YOUNGER CREEK DRIVE SACRAMENTO, CA 95828 (916) 388-0288 FAX 388-0295	PART NO.	KPC PH4T-C51
	10/26/15	DWG: KPC_PH4T-C51

NOTES:

WARRANTY NOTICE:

There are NO WARRANTIES, either expressed or implied. Neither the seller nor manufacturer will be liable for any loss, damage or injury, direct or indirect, arising from the use or inability to determine the appropriate use of any products. Before any attempt at installation, all drawings and/or instruction sheets should be completely reviewed to determine the suitability of the product for its intended use. In this connection, the user assumes all responsibility and risk. We reserve the right to change specification without notice. Further, Chris Alston's Chassisworks, Inc., makes **NO GUARANTEE** in reference to any specific class legality of any component. **ALL PRODUCTS ARE INTENDED FOR RACING AND OFF-ROAD USE AND MAY NOT BE LEGALLY USED ON THE HIGHWAY.** The products offered for sale are true race-car components and, in all cases, require some fabrication skill. **NO PRODUCT OR SERVICE IS DESIGNED OR INTENDED TO PREVENT INJURY OR DEATH.**

KP Components
A Chris Alston's Chassisworks Inc., Brand
8661 Younger Creek Drive
Sacramento, CA 95828
Technical Support: KPtech@cachassisworks.com

