

**READ ALL INSTRUCTIONS COMPLETELY AND THOROUGHLY UNDERSTAND THEM BEFORE DOING ANYTHING.
CALL KP COMPONENTS TECH SUPPORT (916) 388-0288 IF YOU NEED ASSISTANCE.**

INSTALLATION GUIDE



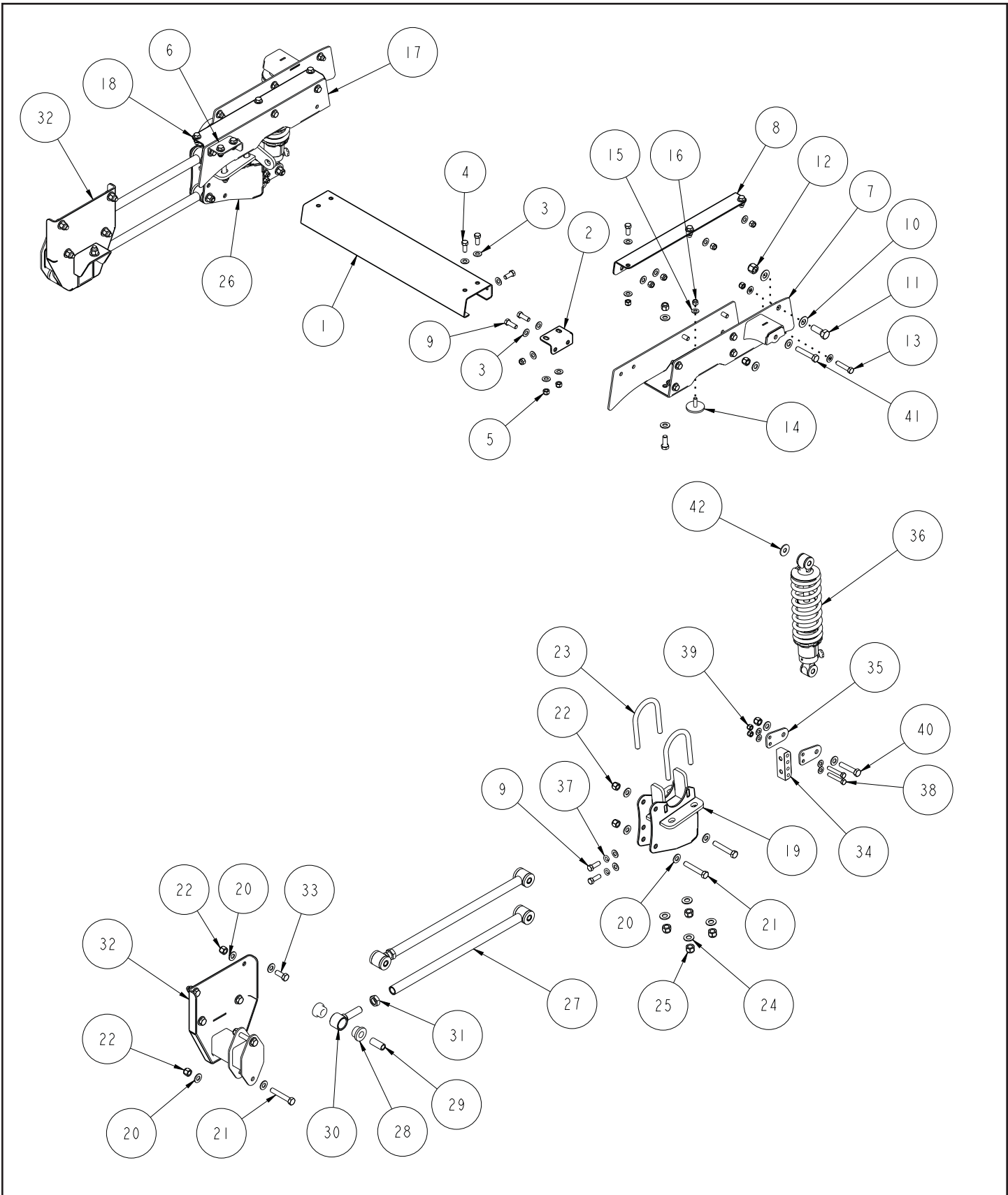
KPC 4LCO-C51 **Bolt-On 4-Link Coil-Over System** **1973-1987 Chevrolet C10 and GMC Pickup**



Description:

Bolt-on 4-link coil-over suspension system includes 4-link, frame and axle brackets, shocks, springs and panhard bar locator. Optional adjustable shock valving and Watts link.

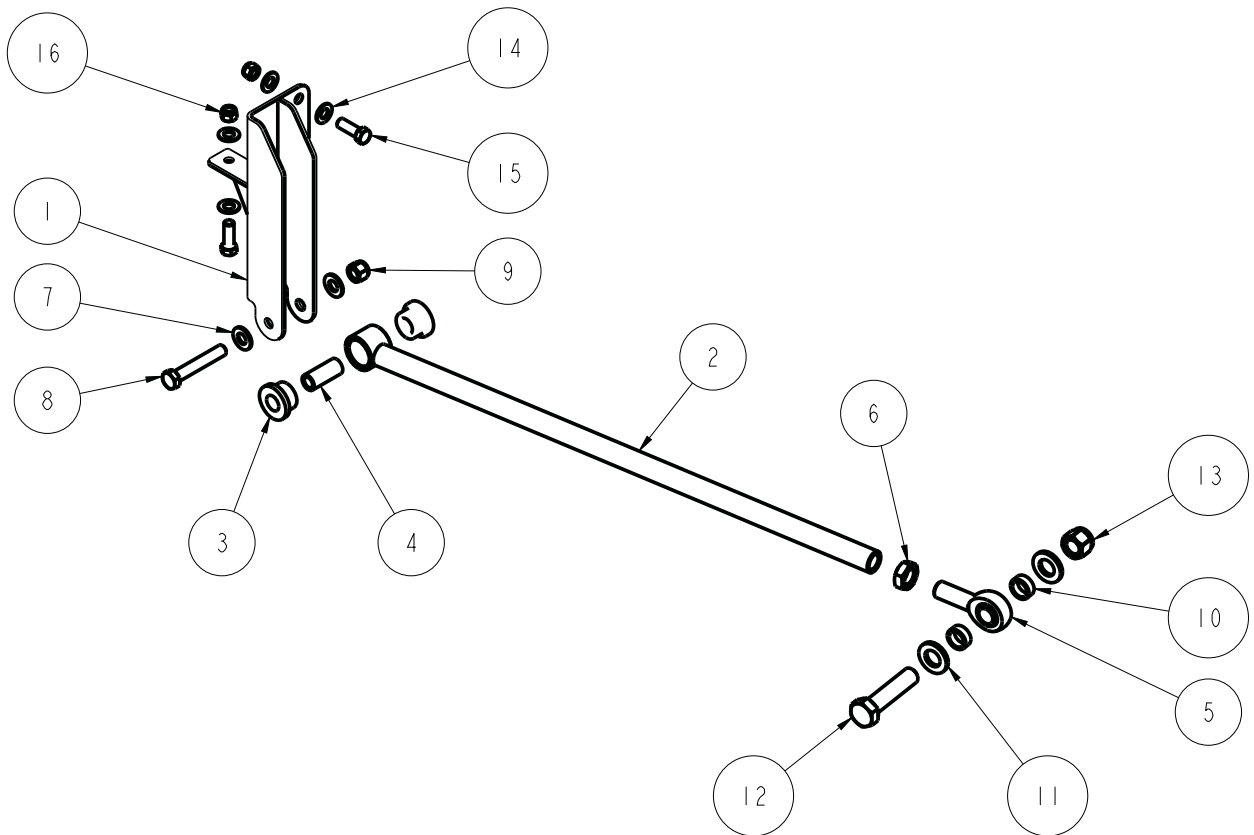
Part Number	Description	PDF Page
KPC 4LCO-C51	4-Link Suspension System, Bolt-On	2
KPC PH4T-C51	Panhard Bar, Bolt-On	4
Instructions included for components listed in chart.		



DESCRIPTION	4-LINK ASSEMBLY, COIL OVER, 73-87 CHEVROLET/GMC C10	
Chris Alston's CHASSISWORKS INC. 8661 YOUNGER CREEK DRIVE SACRAMENTO, CA 95828 (916) 388-0288 FAX 388-0295	PART NO.	KPC 4LCO-C51
	9/25/15	DWG: KPC_4LCO-C51

ITEM	QTY	PART NO.	DESCRIPTION
1	1	7930-246	NOTCH CROSSMEMBER, BOLT-ON, 73-87 CHEVROLET/GMC C10
2	1	7930-184	BRKT #184, NOTCH CROSSMEMBER, DRV, 63-72 CHEVROLET/GMC C10
3	70	3157-044S-C	WASHER, 7/16 SAE, ZINC PLATED, 7/16 ID x 1 1/8 OD x 1/16 THICK
4	28	3100-044C1.00Y	HEX BOLT, 7/16-14 x 1, GRADE 8, YELLOW ZINC
5	33	3101-044-14C	LOCKNUT 7/16-14, GRADE 5 NYLON INSERT, CLEAR ZINC
6	1	7930-185	BRKT #185, NOTCH CROSSMEMBER, PSGR, 63-72 CHEVROLET/GMC C10
7	1	7930-236	NOTCH WELDMENT #236, DRV, 73-87 CHEVROLET/GMC C10
8	1	7930-244	SUPPORT BRKT #244, 4-LINK NOTCH, DRV, 73-87 CHEVROLET/GMC C10
9	8	3100-044C1.25Y	HEX BOLT, 7/16-14 x 1 1/4, GRADE 8, YELLOW ZINC
10	2	3157-063S-C	WASHER, 5/8 SAE, ZINC PLATED, 21/32 ID x 1 5/16 OD x 1/16 THICK
11	1	3100-063F1.75Y	HEX BOLT, 5/8-18 x 1 3/4, GRADE 8, YELLOW ZINC
12	1	3101-063-18C	LOCKNUT 5/8-18, GRADE 5, NYLON INSERT, CLEAR ZINC
13	1	3100-044C2.00Y	HEX BOLT, 7/16-14 x 2, GRADE 8, YELLOW ZINC
14	2	3173-03-08-32-S	BUMPSTOP, LOW PROFILE, 2.00 x .475, 3/8-16 x 1.13
15	10	3157-038S-C	WASHER, 3/8 SAE, ZINC PLATED, 13/32 ID x 13/16 OD x 1/16 THICK,
16	2	3101-038-16C	LOCKNUT 3/8-16, GRADE 5, NYLON INSERT, CLEAR ZINC
17	1	7930-237	NOTCH WELDMENT #237, PSGR, 73-87 CHEVROLET/GMC C10
18	1	7930-245	SUPPORT BRKT #245, 4-LINK NOTCH, PSGR, 73-87 CHEVROLET/GMC C10
19	1	7930-250	AXLE MOUNT, 4-LINK, DRV, 73-87 CHEVROLET/GMC C10
20	48	3157-050S-C	WASHER, 1/2 SAE, ZINC PLATED, 1/2 ID x 1 1/16 OD x 3/32 THICK
21	8	3100-050C3.00Y	HEX BOLT, 1/2-13 x 3, GRADE 8, YELLOW ZINC
22	24	3101-050-13C	LOCKNUT 1/2-13, GRADE 5, NYLON INSERT, CLEAR ZINC
23	4	3147-300.56-525	U-BOLT, AXLE TUBE, 9/16-18 x 3.00 x 5.25
24	8	3120-056S-Y	FLAT WASHER, 9/16 SAE, HARDENED, YELLOW ZINC
25	8	3131-056-18Y	LOCKNUT, 9/16-18, GRADE 8, NYLON INSERT, YELLOW ZINC
26	1	7930-251	AXLE MOUNT, 4-LINK, PSGR, 73-87 CHEVROLET/GMC C10
27	4	7930-011-21.70	LINK BAR WELDMENT, 21.70 OAL, 3/4-16 x 90°, 1.25 ID POLY
28	16	3141-2440-0.88	POLYURETHANE BUSHING 1.63 x .750 x .750
29	8	3140-1624-056	SLEEVE, POLY BUSHING, Ø3/4 x .50 x 1.750
30	4	7930-003	POLY EYE WELDMENT, 3/4-16 x 1 1/4 BORE
31	4	3102-075-16RC	JAM NUT, 3/4-16 RIGHT, CLEAR ZINC
32	2	7930-233	4-LINK WELDMENT #233, 73-87 CHEVROLET/GMC C10
33	12	3100-050C1.25Y	HEX BOLT, 1/2-13 x 1 1/4, GRADE 8, YELLOW ZINC
34	2	1562	SHOCK MOUNT, ADJUSTABLE, 63-72 CHEVROLET/GMC C10
35	4	2198	SHOCK MOUNT, ADJUSTABLE, Ø3/8 HOLES ON 7/8 CENTERS
36	2	VAS 11222-515	C/O Q2, POLY x POLY, 5.15 TRAVEL
37	4	3108-044L-C	LOCK WASHER, HELICAL SPRING Ø7/16, STEEL, ZINC
38	4	3100-038F2.25Y	HEX BOLT, 3/8-24 x 2 1/4, GRADE 8, YELLOW ZINC
39	4	3101-038-24C	LOCKNUT, 3/8-24, GRADE 5, NYLON INSERT, CLEAR ZINC
40	2	3100-050C2.50Y	HEX BOLT, 1/2-13 x 2 1/2, GRADE 8, YELLOW ZINC
41	2	3100-050C2.75Y	HEX BOLT, 1/2-13 x 2 3/4, GRADE 8, YELLOW ZINC
42	2	899-044.51-1.36	STEEL WASHER Ø1.360 x .510 ID x .105 THICK

ITEM	QTY	PART NO.	DESCRIPTION
1	1	7935-078	WELDMNT #78, PANHARD BAR MOUNT, 73-87 CHEVROLET/GMC C10
2	1	7935-013	PANHARD BAR WELD, 9° x 1.25 POLY 28.153 LONG x 3/4-16 THREAD
3	2	3141-2440-0.88	POLYURETHANE BUSHING 1.63 x .750 x .750
4	1	3140-1624-056	SLEEVE, POLY BUSHING, Ø3/4 x .50 x 1.750
5	1	3111-075X075-RT	ROD END, 3/4-16 RIGHT x 3/4 BORE, TEFLON, MTM-12
6	1	3102-075-16RC	JAM NUT, 3/4-16 RIGHT, CLEAR ZINC
7	2	3157-050S-C	WASHER, 1/2 SAE, ZINC PLATED, 1/2 ID x 1 1/16 OD x 3/32 THICK
8	1	3100-050C3.00Y	HEX BOLT, 1/2-13 x 3, GRADE 8, YELLOW ZINC
9	1	3101-050-13C	LOCKNUT 1/2-13, GRADE 5, NYLON INSERT, CLEAR ZINC
10	2	DI6.120-000.375	CUT TUBE, Ø1 x .120 WALL DOM x .375
11	2	3157-075S-C	WASHER, 3/4 SAE, ZINC PLATED, 13/16 ID x 1 15/32 OD x 5/32 THICK
12	1	3100-075F3.25Y	HEX BOLT, 3/4-16 x 3 1/4, GRADE 8, YELLOW ZINC
13	1	3101-075-16C	LOCKNUT 3/4-16, GRADE 5, NYLON INSERT, CLEAR ZINC
14	6	3157-044S-C	WASHER, 7/16 SAE, ZINC PLATED, 7/16 ID x 1 1/8 OD x 1/16 THICK
15	3	3100-044C1.25Y	HEX BOLT, 7/16-14 x 1 1/4, GRADE 8, YELLOW ZINC
16	3	3101-044-14C	LOCKNUT 7/16-14, GRADE 5 NYLON INSERT, CLEAR ZINC



DESCRIPTION **PANHARD BAR, TUBULAR, 4-LINK & TRAILING ARM, 73-87 CHEVROLET/GMC C10**

Chris Alston's **CHASSISWORKS INC.**
 8661 YOUNGER CREEK DRIVE
 SACRAMENTO, CA 95828
 (916) 388-0288 FAX 388-0295

PART NO.

KPC PH4T-C51

10/26/15

DWG: KPC_PH4T-C51

NOTES:

WARRANTY NOTICE:

There are NO WARRANTIES, either expressed or implied. Neither the seller nor manufacturer will be liable for any loss, damage or injury, direct or indirect, arising from the use or inability to determine the appropriate use of any products. Before any attempt at installation, all drawings and/or instruction sheets should be completely reviewed to determine the suitability of the product for its intended use. In this connection, the user assumes all responsibility and risk. We reserve the right to change specification without notice. Further, Chris Alston's Chassisworks, Inc., makes **NO GUARANTEE** in reference to any specific class legality of any component. **ALL PRODUCTS ARE INTENDED FOR RACING AND OFF-ROAD USE AND MAY NOT BE LEGALLY USED ON THE HIGHWAY.** The products offered for sale are true race-car components and, in all cases, require some fabrication skill. **NO PRODUCT OR SERVICE IS DESIGNED OR INTENDED TO PREVENT INJURY OR DEATH.**

KP Components
A Chris Alston's Chassisworks Inc., Brand
8661 Younger Creek Drive
Sacramento, CA 95828
Technical Support: KPtech@cachassisworks.com

