

READ ALL INSTRUCTIONS COMPLETELY AND THOROUGHLY UNDERSTAND THEM BEFORE DOING ANYTHING.  
CALL CHASSISWORKS TECH SUPPORT (916) 388-0288 IF YOU NEED ASSISTANCE.

## INSTALLATION GUIDE



### 5906-F20 g-Connector Torque Arm Center Support 1970-81 Camaro/Firebird

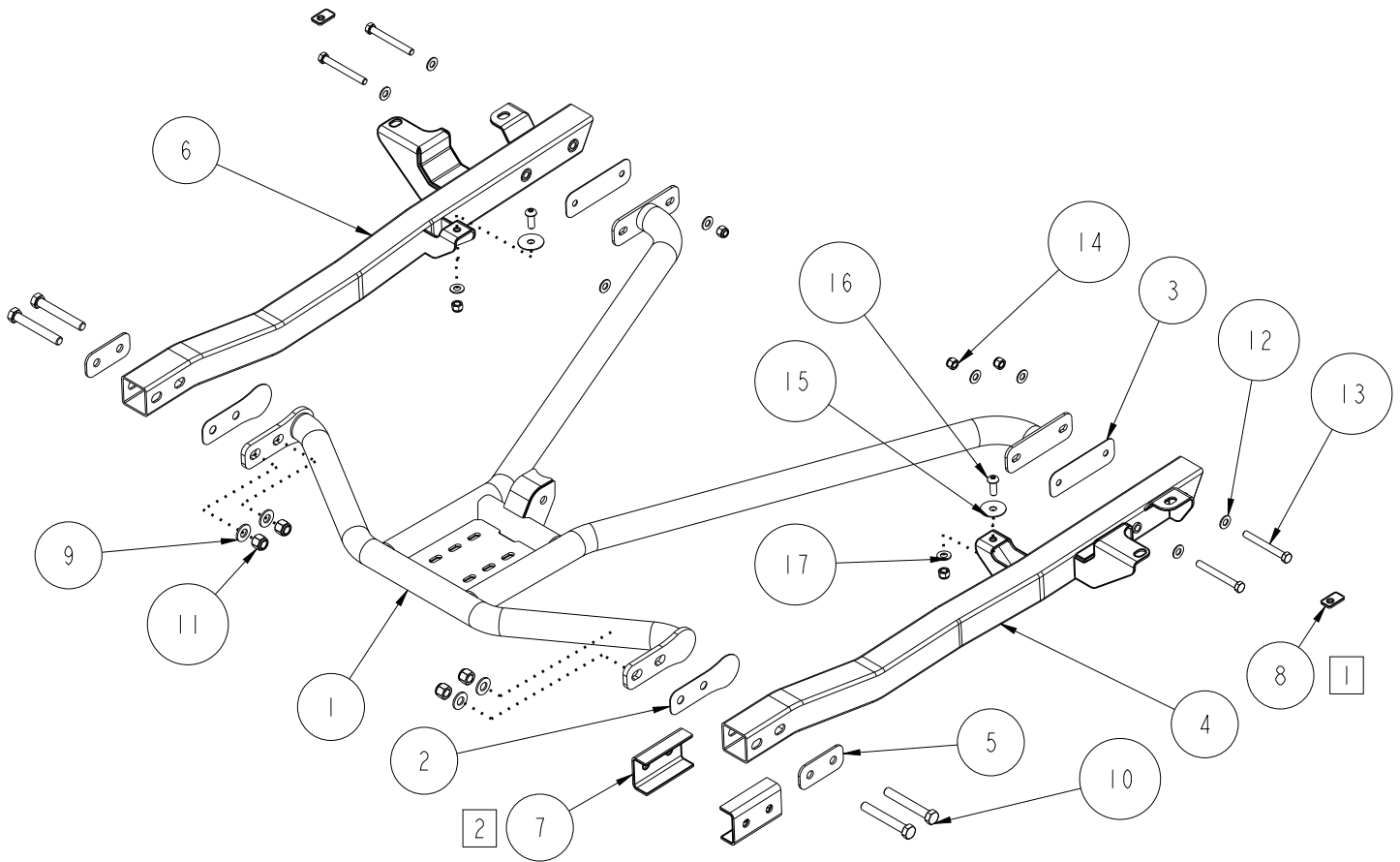


**Description:** Bolt-in subframe center support for torque arm suspension. Connects left and right subframe connectors. For Chassisworks or OEM front subframe. OEM subframe requires weld-on adapters.

**Applications:** Camaro '70-81 and Firebird '70-81

**Notes:** Installation of subframe connectors required; modification to exhaust may be required

ITEM	QTY	PART NO.	DESCRIPTION
1	1	7962-0123	WELDMENT, CENTER SUPPORT, TORQUE ARM, 70-81 CAMARO/FIREBIRD
2	4	7962-0096	SHIM, CENTER SUPPORT, 67-81 CAMARO/FIREBIRD
3	4	7908-058	SHIM, 1/16 CENTER SUPPORT, TCP
4	1	7962-0098	SUBFRAME CONNECTOR, BOLT-ON, DRIVER, 70-73 CAMARO/FIREBIRD
5	2	7962-0097	MOUNTING PLATE, OUTBOARD, CENTER SUPPORT, 67-81 CAMARO/FIREBIRD
6	1	7962-0099	SUBFRAME CONNECTOR, BOLT-ON, PSGR, 70-73 CAMARO/FIREBIRD
7	4	230140	CLAMPING BRKT, SBFRM CNCTR, 67-69 CMRO/FBIRD, 68-72 NOVA, S/M CLIP
8	2	2055	SPACER WASHER, SBFRM CNCTR 67-69 CMRO/FBIRD, 69-72 NOVA
9	4	3120-050S-Y	FLAT WASHER, 1/2 SAE, HARDENED, YELLOW ZINC
10	4	3100-050F3.50Y	HEX BOLT, 1/2-20 x 3 1/2, GRADE 8, YELLOW ZINC
11	4	3101-050-20C	LOCKNUT, 1/2-20, GRADE 5, NYLON INSERT, CLEAR ZINC
12	8	3120-038S-Y	FLAT WASHER, 3/8 SAE, HARDENED, YELLOW ZINC
13	4	3100-038F3.25Y	HEX BOLT, 3/8-24 x 3 1/4, GRADE 8, YELLOW ZINC
14	6	3101-038-24C	LOCKNUT, 3/8-24, GRADE 5, NYLON INSERT, CLEAR ZINC
15	2	3157-038F-C	FENDER WASHER, 3/8 x 1 1/2, ZINC PLATED
16	2	3104-038F1.00C	BUTTON HEAD CAP SCREW, 3/8-24 x 1, CLEAR ZINC
17	2	3157-038S-C	WASHER, 3/8 SAE, ZINC PLATED, 13/32 ID x 13/16 OD x 1/16 THICK,



NOTES:  
 1. OUTBOARD SPRING MOUNT SHIM  
 2. FOR SUBFRAME CONNECTORS  
 WITHOUT CENTER SUPPORT

DESCRIPTION	
<b>CONNECTOR SUPPORT, TORQUE ARM, 70-81 CAMARO/FIREBIRD</b>	
<i>Chris Aston's</i> <b>CHASSISWORKS INC.</b> 8661 YOUNGER CREEK DRIVE SACRAMENTO, CA 95828 (916) 388-0288 FAX 388-0295	PART NO. <b>5906-F20</b>
2/23/15	DWG: 7951-5906F20

# PARTS LIST

## 5906-F20 - Torque Arm Center Support 70-81 Camaro/Firebird

Qty	Part Number	Description
1	7962-0123	Center support weldment F20
1	7952-5906F20	Hardware Bag

## 7952-5906F20 - Hardware Bag

4	3100-038F3.25Y	Bolt 3/8-24 x 3-1/4" hex head cap screw
4	3100-050F3.50Y	Bolt 1/2-20 x 3-1/2" hex head cap screw
4	3101-038-24C	Locknut 3/8-24 nylon insert
8	3120-038S-Y	Washer 3/8" hardened flat SAE
4	3120-050S-Y	Washer 1/2" hardened flat SAE
4	7908-058	Center support 1/16" shim
4	7962-0096	Center support shim 1/16" front shim
2	7962-0097	Center support outboard plate

# INSTRUCTIONS

The subframe connectors must be installed before proceeding.

1. Raise and safely support the vehicle with the subframe connectors unobstructed and with enough room to work underneath.
2. Measure the distance between the inside edges at the front of the subframe connectors. The minimum distance required to mount the bolt-in center support is 31.3".

**Measurements less than 31.3":** Distance between connectors must be increased until the center support fits snugly.

**Measurements over 31.3":** Require use of the supplied shims to take up the space.

### 3. Exhaust Modification:

If the exhaust is currently installed on the vehicle, test fit the center support to check for clearance. If the center support does not clear, the exhaust must be modified. There is sufficient room available with the center support installed to use long tube headers with 'H' or 'X' pipe and dual 3" exhaust.

4. Remove exhaust and proceed with installation. Center support and driveshaft must be installed during exhaust fabrication. Leave adequate clearance for the driveshaft throughout the rear suspension's range of travel.
5. Insert a mounting bolt through the rectangular two-hole mounting plate. The mounting plate is the outboard washer.
6. Raise the front of the center support into position and insert only the forwardmost bolt through each subframe connector and then through the center support tab.
7. Swing the center support up until the rear tabs are in line with frame connector brackets. Minimum distance between connectors is 32.1".
8. Slide a flat washer onto the 3/8 x 3-1/4" hex bolts and insert them through the rear mount from the outside.
9. If the side clearance between the center support and the subframe connectors is greater than 1/16", use the supplied shims.

10. The shims can be easily installed by backing out one bolt at a time and inserting the shim.
11. Once any necessary shims are in place, slide flat washers over the hex bolts followed by locknuts and tighten to 45 lb-ft.
12. The installation is complete.



*Image shows non-torque arm center support.*

**WARRANTY NOTICE:**

There are NO WARRANTIES, either expressed or implied. Neither the seller nor manufacturer will be liable for any loss, damage or injury, direct or indirect, arising from the use or inability to determine the appropriate use of any products. Before any attempt at installation, all drawings and/or instruction sheets should be completely reviewed to determine the suitability of the product for its intended use. In this connection, the user assumes all responsibility and risk. We reserve the right to change specification without notice. Further, Chris Alston's Chassisworks, Inc., makes **NO GUARANTEE** in reference to any specific class legality of any component. **ALL PRODUCTS ARE INTENDED FOR RACING AND OFF-ROAD USE AND MAY NOT BE LEGALLY USED ON THE HIGHWAY.** The products offered for sale are true race-car components and, in all cases, require some fabrication skill. **NO PRODUCT OR SERVICE IS DESIGNED OR INTENDED TO PREVENT INJURY OR DEATH.**

Chris Alston's Chassisworks  
8661 Younger Creek Drive  
Sacramento, CA 95828  
Phone: 916-388-0288  
Technical Support: sales@cachassisworks.com

