

READ ALL INSTRUCTIONS COMPLETELY AND THOROUGHLY UNDERSTAND THEM BEFORE DOING ANYTHING.
CALL CHASSISWORKS TECH SUPPORT (916) 388-0288 IF YOU NEED ASSISTANCE.

INSTALLATION GUIDE



5904-F10 g-Connector Center Support 1967-69 Camaro/Firebird

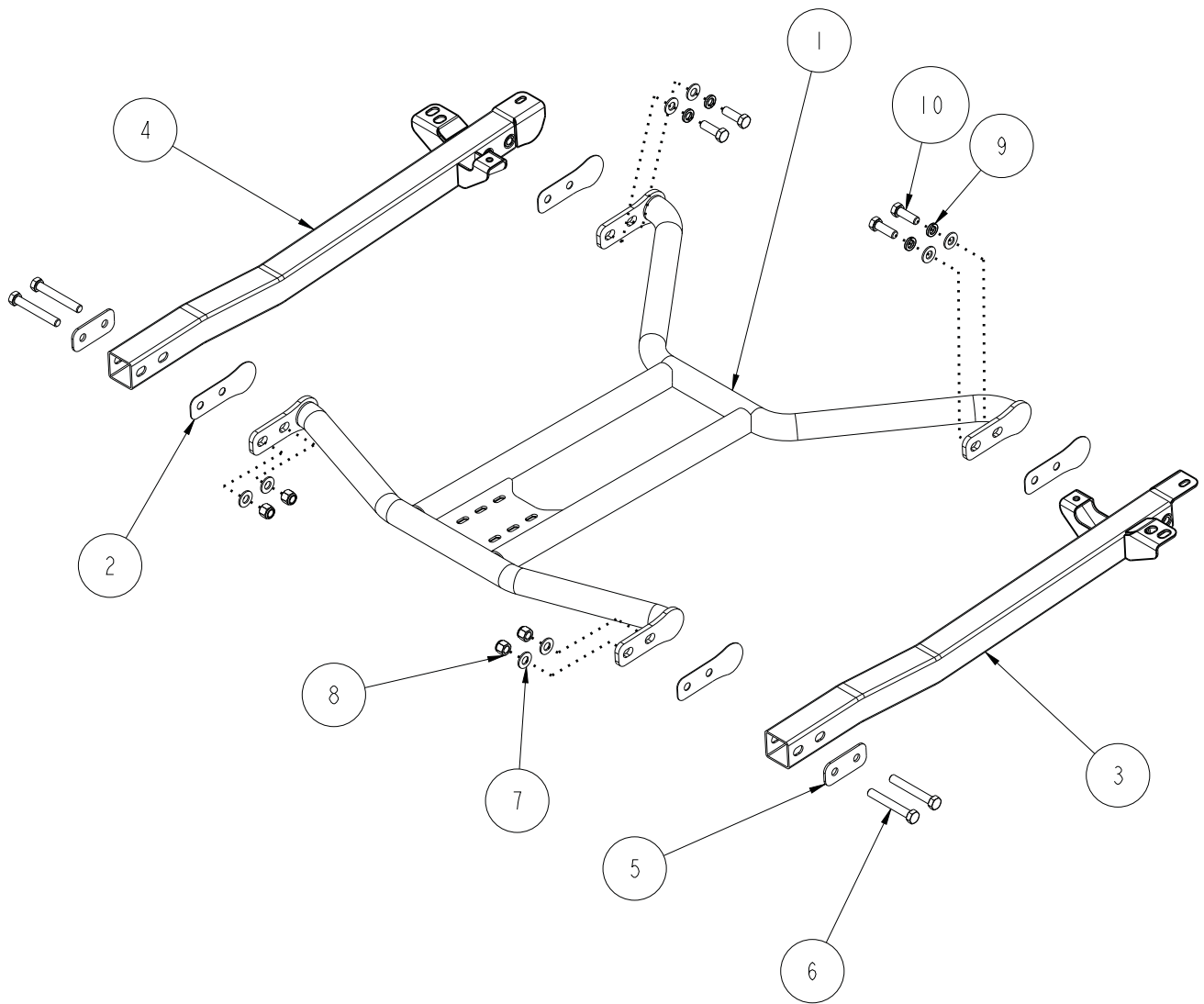


Description: Bolt-in subframe center support connects left and right subframe connectors. For Chassisworks or OEM front subframe. OEM subframe requires weld-on adapters.

Applications: Camaro '67-69 and Firebird '67-69

Notes: Installation of subframe connectors required; modification to exhaust may be required

ITEM	QTY	PART NO.	DESCRIPTION
1	1	7962-0115	CENTER SUPPORT WELDMENT, 67-69 CAMARO/FIREBIRD CLIP
2	8	7962-0096	SHIM, CENTER SUPPORT, 67-81 CAMARO/FIREBIRD
3	1	5134	SUBFRAME CONNECTOR, DRIVER 67-69 CAMARO/FIREBIRD, S/M CLIP
4	1	5135	SUBFRAME CONNECTOR, PSGR 67-69 CAMARO/FIREBIRD, S/M CLIP
5	2	7962-0097	MOUNTING PLATE, OUTBOARD, CENTER SUPPORT, 67-81 CAMARO/FIREBIRD
6	4	3100-050F3.50Y	HEX BOLT, 1/2-20 x 3 1/2, GRADE 8, YELLOW ZINC
7	8	3120-050S-Y	FLAT WASHER, 1/2 SAE, HARDENED, YELLOW ZINC
8	4	3101-050-20C	LOCKNUT, 1/2-20, GRADE 5, NYLON INSERT, CLEAR ZINC
9	4	3108-050L-C	LOCKWASHER, 1/2 MEDIUM, PLATED
10	4	3100-050F1.50Y	HEX BOLT, 1/2-20 x 1 1/2, GRADE 8, YELLOW ZINC



DESCRIPTION		CONNECTOR SUPPORT, 67-69 CAMARO/FIREBIRD	
<i>Chris Aston's</i> CHASSISWORKS INC. 8661 YOUNGER CREEK DRIVE SACRAMENTO, CA 95828 (916) 388-0288 FAX 388-0295		PART NO.	5904-F10
		2/23/15	DWG: 7951-5904F10

PARTS LIST

5904-F10 - Center Support 67-69 Camaro/Firebird

Qty	Part Number	Description
1	7962-0115	Center support weldment F10
1	7952-5904F10	Hardware Bag

7952-5904F10 - Hardware Bag

4	3100-050F1.50Y	Bolt 1/2-20 x 1-1/2" hex head cap screw
4	3100-050F3.50Y	Bolt 1/2-20 x 3-1/2" hex head cap screw
4	3101-050-20C	Locknut 1/2-20 nylon insert
4	3108-050L-C	Lock washer 1/2" regular
8	3120-050S-Y	Washer 1/2" hardened flat SAE
8	7962-0096	Center support shim 1/16" thick
2	7962-0097	Center support outboard plate

INSTRUCTIONS

The subframe connectors must be installed before proceeding.

1. Raise and safely support the vehicle with the subframe connectors unobstructed and with enough room to work underneath.
2. Measure the distance between the inside edges at the front of the subframe connectors. The minimum distance required to mount the bolt-in center support is 31-5/8".

Measurements less than 31-5/8": Distance between connectors must be increased until the center support fits snugly.

Measurements over 31-5/8": Require use of the supplied shims to take up the space.

3. Exhaust Modification:

If the exhaust is currently installed on the vehicle, test fit the center support to check for clearance. If the center support does not clear, the exhaust must be modified. There is sufficient room available with the center support installed to use long tube headers with 'H' or 'X' pipe and dual 3" exhaust.

4. Remove exhaust and proceed with installation. Center support and driveshaft must be installed during exhaust fabrication. Leave adequate clearance for the driveshaft throughout the rear suspension's range of travel.
5. Insert a mounting bolt through the rectangular two-hole mounting plate. The mounting plate is the outboard washer.
6. Raise the front of the center support into position and insert only the forwardmost bolt through each subframe connector and then through the center support tab.
7. Swing the center support up until the rear tabs are in line with frame connector brackets.
8. Slide a lockwasher followed by a flat washer onto the 1/2-20 x 1-1/2" hex bolts and thread them into the frame-connector.
9. If the side clearance between the center support and the subframe connectors is greater than 1/16", use the supplied shims.
10. The shims can be easily installed by backing out one bolt at a time and inserting the shim.

11. Once any necessary shims are in place, slide flat washers over the front hex bolts followed by locknuts. Slide the flat washers and lockwashers over the rear hex bolts and tighten all hardware to 45 lb-ft.
12. The installation is complete.



WARRANTY NOTICE:

There are NO WARRANTIES, either expressed or implied. Neither the seller nor manufacturer will be liable for any loss, damage or injury, direct or indirect, arising from the use or inability to determine the appropriate use of any products. Before any attempt at installation, all drawings and/or instruction sheets should be completely reviewed to determine the suitability of the product for its intended use. In this connection, the user assumes all responsibility and risk. We reserve the right to change specification without notice. Further, Chris Alston's Chassisworks, Inc., makes **NO GUARANTEE** in reference to any specific class legality of any component. **ALL PRODUCTS ARE INTENDED FOR RACING AND OFF-ROAD USE AND MAY NOT BE LEGALLY USED ON THE HIGHWAY.** The products offered for sale are true race-car components and, in all cases, require some fabrication skill. **NO PRODUCT OR SERVICE IS DESIGNED OR INTENDED TO PREVENT INJURY OR DEATH.**

Chris Alston's Chassisworks
8661 Younger Creek Drive
Sacramento, CA 95828
Phone: 916-388-0288
Technical Support: sales@cachassisworks.com

