

READ ALL INSTRUCTIONS COMPLETELY AND THOROUGHLY UNDERSTAND THEM BEFORE DOING ANYTHING.
CALL CHASSISWORKS TECH SUPPORT (916) 388-0288 IF YOU NEED ASSISTANCE.

INSTALLATION GUIDE



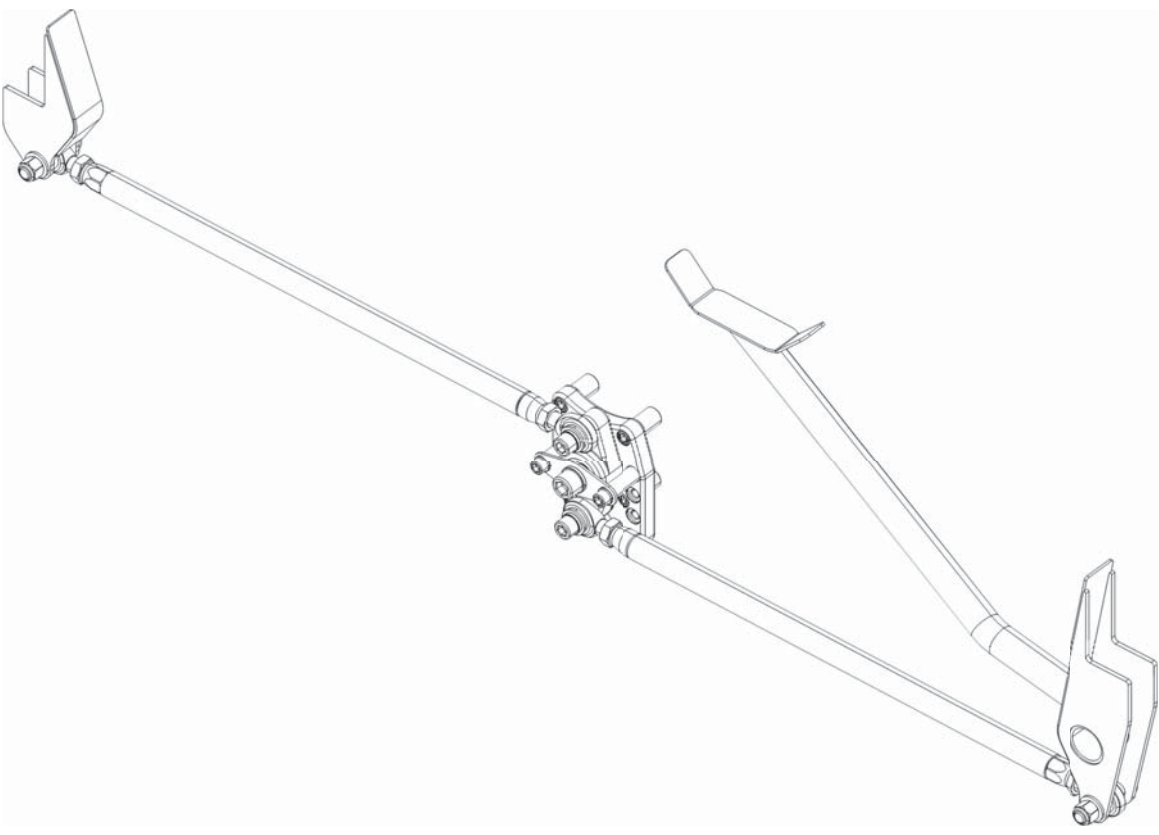
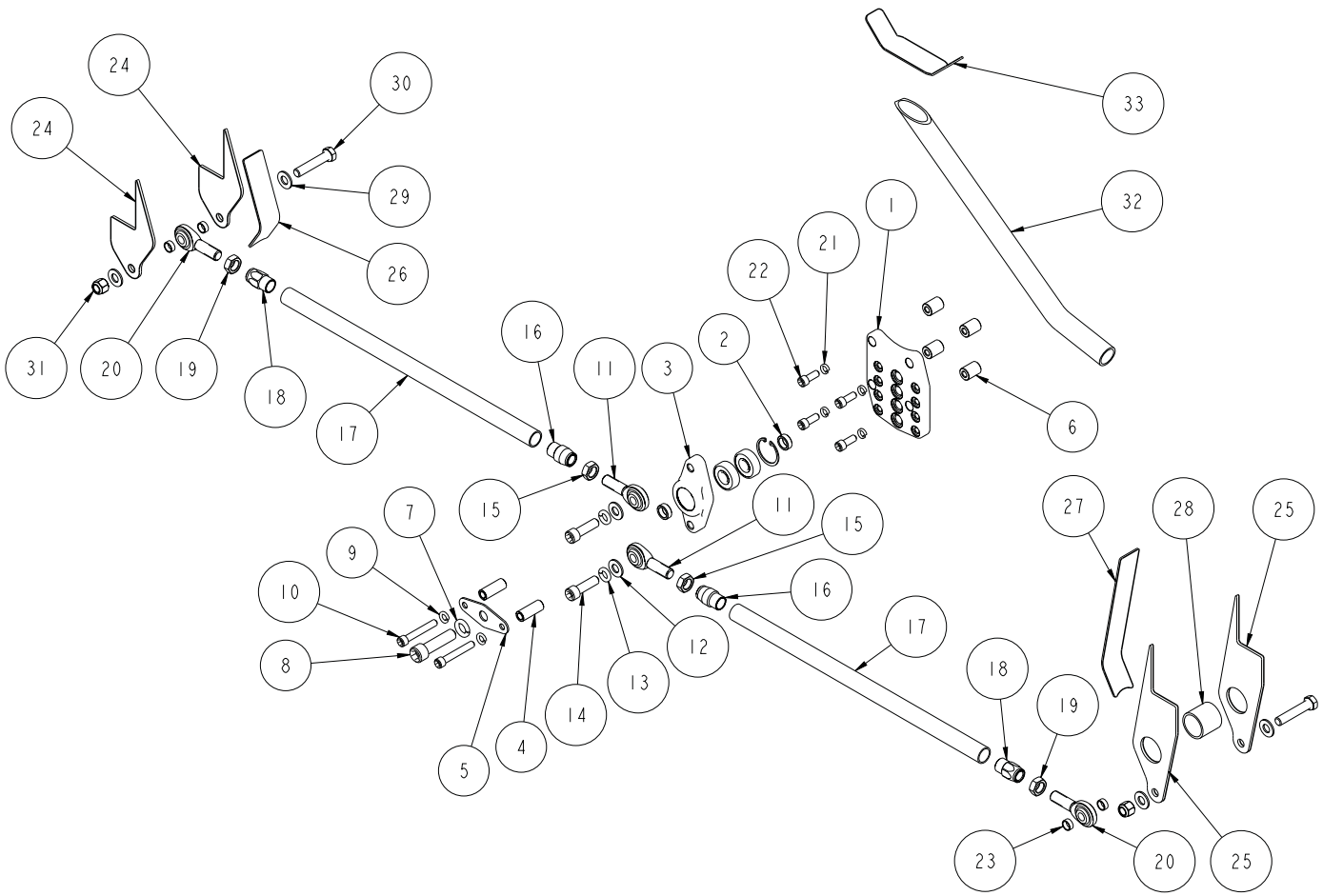
5855-U01

Universal-Fit Billet Watts Link, 50" Max. Width



Description: Universal-Fit Billet Watts Link for inside frame rail spans up to 50". Links are 4130 tubular steel for welded assembly with threaded billet adapters. Laser-cut frame brackets and pre-bent gussets must be custom-fit for installation and final welding. Components are shipped unassembled.

Notes: Product must be custom-fit to vehicle. Trimming and welding required for installation.
- SPECIAL ORDER PART NOT RETURNABLE FOR ANY REASON -



ITEM	QTY	PART NO.	DESCRIPTION
1	1	7959-2012	MOUNTING PLATE, WATTS LINK, 4 POSITION ADJUSTABLE, FAB-9
2	2	7959-2014	SPACER, $\varnothing 7/8$ OD x .120 WALL x .313 LONG
3	1	7959-2026	BELL CRANK ASSEMBLY, WATTS LINK, G-STREET
4	2	7959-2015	SPACER, $\varnothing 5/8$ OD x .120 WALL x 1.625 LONG
5	1	7959-2016	TOP PLATE, G-STREET WATTS LINK
6	4	7959-2017	STANDOFF, G-STREET WATTS LINK
7	1	3108-063L-C	LOCK WASHER $\varnothing 5/8$, SPRING
8	1	3103-063C2.50B	SOCKET HEAD CAP SCREW, 5/8-11 x 2 1/2, BLACK OXIDE
9	2	3108-038L-C	LOCK WASHER, HELICAL SPRING $\varnothing 3/8$, STEEL, ZINC
10	2	3103-038C2.50C	SOCKET HEAD CAP SCREW, GRADE 8, 3/8-16 x 2 1/2, CLEAR ZINC
11	2	3136-063X050-RT	ROD END, 5/8-18 RIGHT x 1/2 BORE CMX10-8T-FI
12	2	3157-050S-C	WASHER, 1/2 SAE, ZINC PLATED, 1/2 ID x 1 1/16 OD x 3/32 THICK
13	2	3108-050L-C	LOCKWASHER, 1/2 MEDIUM, PLATED
14	2	3103-050C1.75B	SOCKET HEAD CAP SCREW, 1/2-13 x 1 3/4, BLACK OXIDE
15	2	3102-063-18RC	JAM NUT, 5/8-18 RIGHT, CLEAR ZINC
16	2	1136	TUBE ADAPTER .830 x 5/8-18 RIGHT
17	2	A16.083-020.000	CUT TUBE, 20.000 x $\varnothing 1$ x .083 WALL 4130
18	2	1506	TUBE ADAPTER .830 x 5/8-18 LEFT
19	2	3102-063-18LY	JAM NUT, 5/8-18 LEFT, YELLOW ZINC
20	2	3136-063X050-LT	ROD END, 5/8-18 LEFT x 1/2 BORE CMX10-8T-FI
21	4	3108-038H-S	HIGH COLLAR LOCKWASHER, 3/8 STAINLESS
22	4	3103-038C1.00C	SOCKET HEAD CAP SCREW, GRADE 8, 3/8-16 x 1, CLEAR ZINC,
23	4	1000	MISALIGNMENT BUSHING $\varnothing 1/2$ BORE x .250
24	2	7959-2018	FRAME BRACKET, DRIVER FRONT, FI G-STREET WATTS LINK
25	2	7959-2020	FRAME BRACKET, PSGR FRONT, FI G-STREET WATTS LINK
26	1	7959-2022	GUSSET, WATTS LINK FRAME BRACKET, DRIVER, FI G-STREET
27	1	7959-2024	GUSSET, WATTS LINK FRAME BRACKET, PASSENGER, FI G-STREET
28	1	D26.125-001.500	CUT TUBE, $\varnothing 1 5/8$ x .125 WALL DOM x 1.500
29	4	3120-050S-Y	FLAT WASHER, 1/2 SAE, HARDENED, YELLOW ZINC
30	2	3100-050F2.50Y	HEX BOLT, 1/2-20 x 2 1/2, GRADE 8, YELLOW ZINC
31	2	3101-050-20C	LOCKNUT, 1/2-20, GRADE 5, NYLON INSERT, CLEAR ZINC
32	1	7959-2025	CROSS TUBE, G-STREET WATTS LINK, FI
33	1	7959-2023	GUSSET, WATTS LINK CROSS BAR, FI G-STREET

DESCRIPTION		WATTS LINK ASSEMBLY, G-LINK, UNIVERSAL	
<i>Chris Nelson's</i> CHASSISWORKS INC. 8661 YOUNGER CREEK DRIVE SACRAMENTO, CA 95828 (916) 388-0288 FAX 388-0295		PART NO.	5855-U01
		5/28/15	DWG: 7951-5855U01

PARTS LIST

Prior to installation use the following parts lists to verify that you have received all components.

Universal-Fit Watts Link - 5855-U01

1	300-0185	Hardware box
1 (pair)	300-0193-220W	Link rods welded 22" x 5/8
2	7959-2018	Frame bracket profile, driver side
2	7959-2020	Frame bracket profile, passenger side
1	7959-2022	Frame bracket gusset, driver side
1	7959-2023	Watts crossbrace gusset
1	7959-2024	Frame bracket gusset, passenger side
1	7959-2025	Watts cross support tube
1	D26.125-001.500	Tube gusset, 1-5/8" x 1.5" long
4	7959-2017	Threaded standoff, 3/4" OD x 1" long

Hardware Box - 300-0185

4	1000	Misalignment bushing, 1/2" bore x 1/4" long
2	3100-050F2.50Y	Hex head cap screw, 1/2-20 x 2-1/2", Grade 8
2	3101-050-20C	Locknut 1/2-20 nylon insert, plated
2	3102-063-18LY	Jam nut 5/8-18 LH, yellow zinc
2	3102-063-18RC	Jam nut 5/8-18 RH, yellow zinc
4	3103-038C1.00C	Socket head cap screw, 3/8-16 x 1"
2	3103-038C2.50C	Socket head cap screw, 3/8-16 x 2-1/2"
2	3103-050C1.75C	Socket head cap screw, 1/2-13 x 1-3/4"
1	3103-063C2.50C	Socket head cap screw, 5/8-11 x 2-1/2"
4	3108-038H-C	Lock washer, 3/8" high collar
2	3108-038L-C	Lock washer, 3/8" regular
2	3108-050L-C	Lock washer, 1/2" regular
1	3108-063L-C	Lock washer, 3/8" regular
2	3136-063X050-LT	Rod end, 5/8" LH shank x 1/2" bore
2	3136-063X050-RT	Rod end, 5/8" RH shank x 1/2" bore
6	3157-050S-C	Flat washer, 1/2" SAE, zinc plated
1	7959-2012	Watts link base plate, billet aluminum
2	7959-2014	Spacer, 7/8" OD x 5/8" ID x .313" long
2	7959-2015	Spacer, 5/8" OD x 3/8" ID x 1.625" long
1	7959-2016	Watts link top plate
1	7959-2026	Watts link pivot assembly, billet steel

Watts Link Rods - 300-0193-220W

2	1136	Weld-in tube adapter, 5/8-18 RH
2	1506	Weld-in tube adapter, 5/8-18 LH
2	A16.083-020.000	4130 tube, 1" OD x 20" long

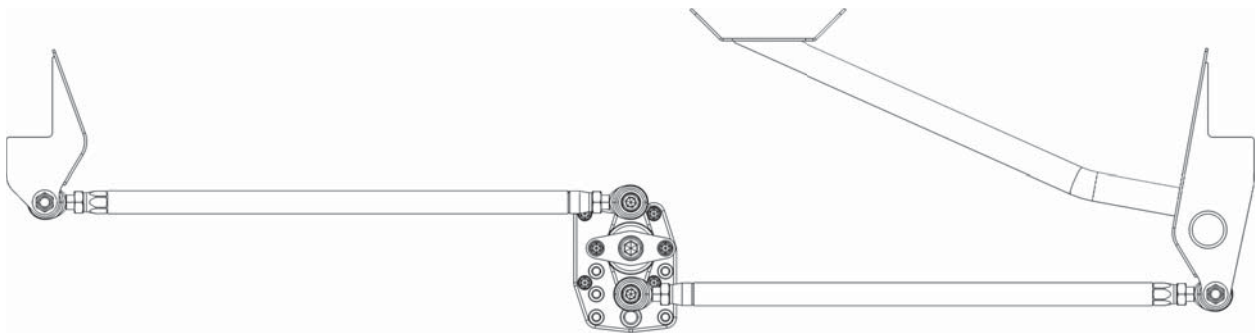
INSTRUCTIONS

The rearend housing must be positioned at intended ride height and correct pinion angle before proceeding.

Mockup and tack weld all components to verify position for correct operation.

Positioning Requirements

- Driver-side frame bracket mounting hole must be 4" higher than passenger side.
- Frame brackets must be positioned in same vertical plane as the Watts pivot.
- Pivot assembly must be centered between the wheels.
- Assembled (welded) Watts link rods must be same length.
- Watts link rods must be parallel when pivot is in 2nd or 3rd adjustment position.



Watts Link Base Plate

Use the billet Watts link base plate as a fixture for welding the mounting bosses to the rearend housing. Standoffs may need to be ground or trimmed to fit. Refer to the assembly drawings for installation.

Frame Brackets

You may need to trim the bracket components to ensure the mounting holes are at the correct height for the base plate adjustment range.

Adjustment

The housing should already be centered in relation to the chassis from previous steps. During assembly, thread engagement of each rod end into the aluminum radius rod must be equal.

The Watts link provides positive lateral location with the least amount of side-to-side variance while within its intended travel range. Expect a noticeable improvement in cornering stability and more linear motion when transitioning into and out of turns. Cornering characteristics will also be identical in left or right turns, providing the vehicles other components and settings are symmetrical.

SQUARING THE PIVOT - With the rearend housing at ride height, the Watts pivot must be perpendicular to the ground or straight up and down to ensure the maximum amount of perfectly centered suspension travel. Lengthening or shortening both links will rotate the pivot without offsetting the rearend.

CENTERING REAREND - Lengthening one link while shortening the other will adjust the left to right position of the rearend housing. The center pivot may need to be resquared.

Tighten panhard bar mounting hardware and jam nuts after adjusting.

ROLL CENTER HEIGHT - The Watts pivot can be moved to one of four positions to affect the handling of the vehicle. Raising the pivot adjusts to vehicle oversteer. Lowering the pivot adjusts toward understeer.

WARRANTY NOTICE:

There are NO WARRANTIES, either expressed or implied. Neither the seller nor manufacturer will be liable for any loss, damage or injury, direct or indirect, arising from the use or inability to determine the appropriate use of any products. Before any attempt at installation, all drawings and/or instruction sheets should be completely reviewed to determine the suitability of the product for its intended use. In this connection, the user assumes all responsibility and risk. We reserve the right to change specification without notice. Further, Chris Alston's Chassisworks, Inc., makes **NO GUARANTEE** in reference to any specific class legality of any component. **ALL PRODUCTS ARE INTENDED FOR RACING AND OFF-ROAD USE AND MAY NOT BE LEGALLY USED ON THE HIGHWAY.** The products offered for sale are true race-car components and, in all cases, require some fabrication skill. **NO PRODUCT OR SERVICE IS DESIGNED OR INTENDED TO PREVENT INJURY OR DEATH.**

Chris Alston's Chassisworks
8661 Younger Creek Drive
Sacramento, CA 95828
Phone: 916-388-0288
Technical Support: sales@cachassisworks.com

