

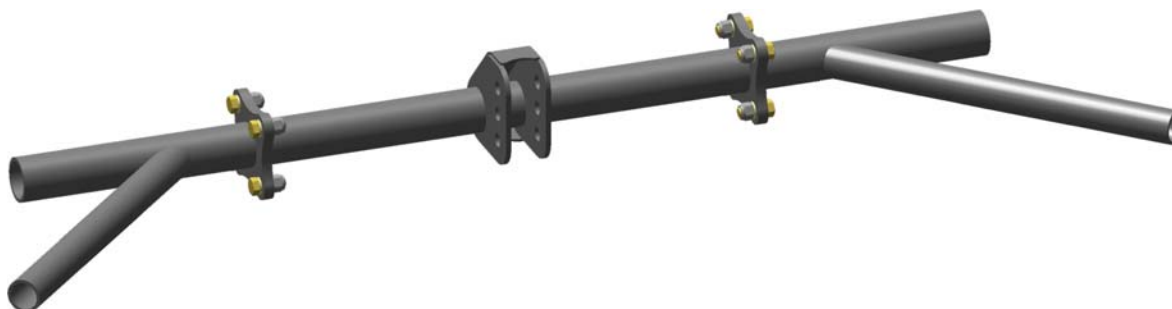
READ ALL INSTRUCTIONS COMPLETELY AND THOROUGHLY UNDERSTAND THEM BEFORE DOING ANYTHING.
CALL CHASSISWORKS TECH SUPPORT (916) 388-0288 IF YOU NEED ASSISTANCE.

INSTALLATION GUIDE



5858-U01

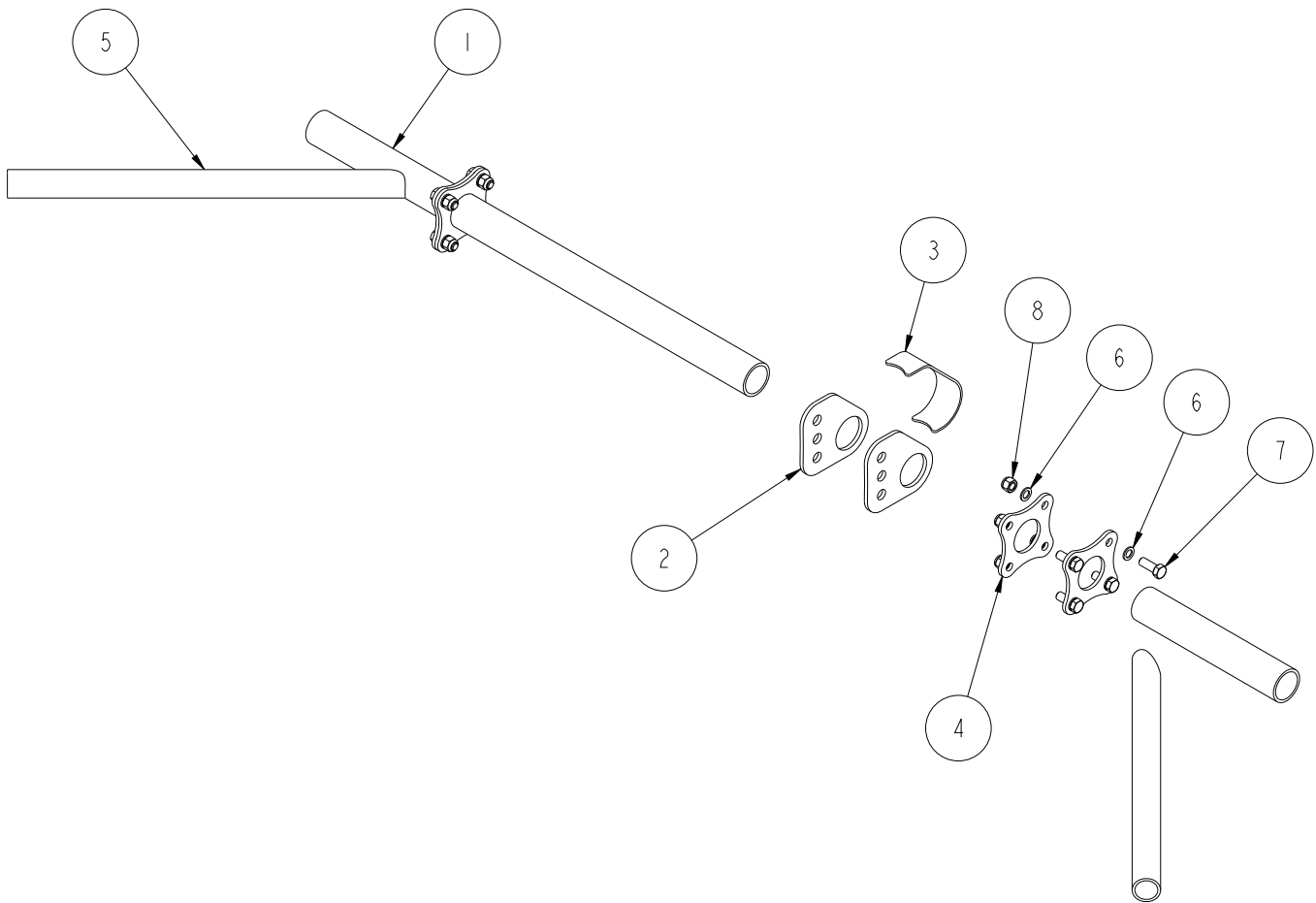
Universal-Fit Torque Arm Crossmember, 52" Max. Width



Description: Universal-fit removable crossmember for torque arm suspension. Features 3-position mounting bracket and accommodates spans up to 52". Components are shipped unassembled.

Notes: Product must be custom-fit to vehicle. Trimming and welding required for installation.
- SPECIAL ORDER PART NOT RETURNABLE FOR ANY REASON -

ITEM	QTY	PART NO.	DESCRIPTION
1	1	E26.134-052.000	STEEL TUBE \varnothing 1 5/8 x 52
2	2	7959-0328	PIVOT BRACKET, TORQUE ARM, 3 HOLE
3	1	7959-0329	GUSSET, PIVOT BRACKET, TORQUE ARM, 3 HOLE
4	4	7959-0184	TUBE CONNECTOR FLANGE, 1 5/8 MILD STEEL
5	1	E20.120-048.000	STEEL TUBE, \varnothing 1 1/4 x .120 ERW x 48.000 LONG
6	16	3109-038-S-2-Y	AIRCRAFT WASHER 3/8 x .062 THICK
7	8	3100-038C1.00Y	HEX BOLT, 3/8-16 x 1, GRADE 8, YELLOW ZINC
8	8	3101-038-16C	LOCKNUT 3/8-16, GRADE 5, NYLON INSERT, CLEAR ZINC



DESCRIPTION	CROSSMEMBER, TORQUE ARM, UNIVERSAL, 3 HOLE	
<i>Chris Alston's</i> CHASSISWORKS INC. 8661 YOUNGER CREEK DRIVE SACRAMENTO, CA 95828 (916) 388-0288 FAX 388-0295	PART NO.	5858-U01
	7/20/15	DWG: 7951-5858U01

PARTS LIST

Prior to installation use the following parts lists to verify that you have received all components.

Universal-Fit Torque Arm Crossmember - 5858-U01

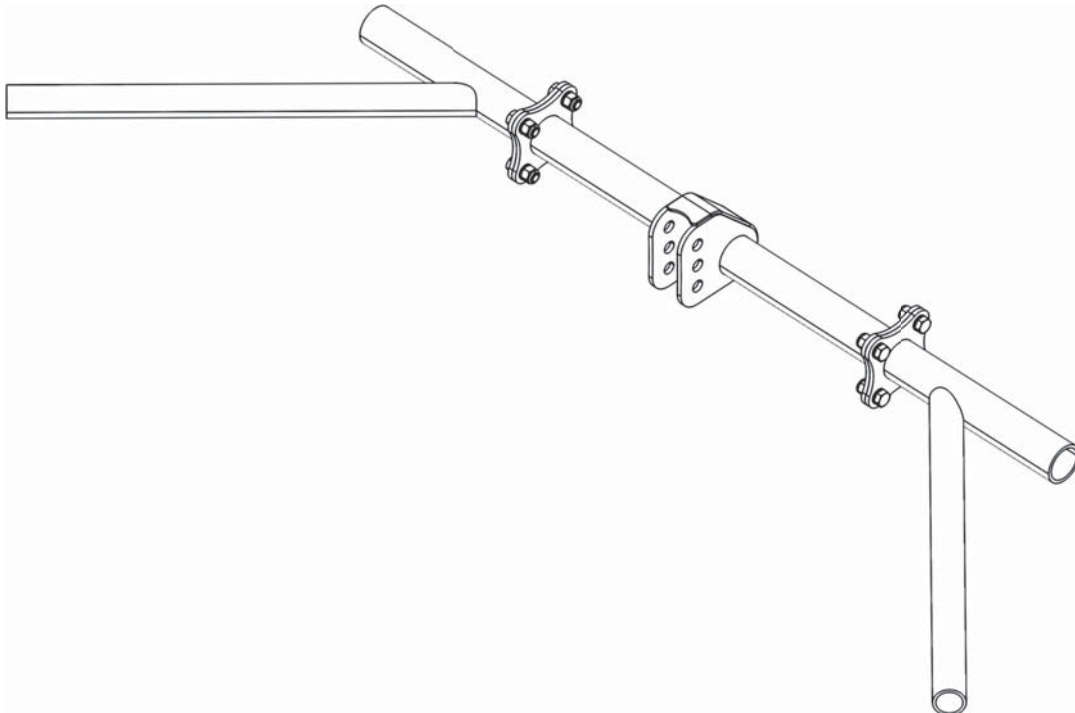
8	3100-038C1.00Y	Hex head cap screw, 3/8-16 x 1", Grade 8
8	3101-038-16C	Locknut 3/8-16 nylon insert, plated
16	3109-038-S-2-Y	Aircraft washer, 3/8", yellow zinc
4	7959-0184	Tube connector flange, 1-5/8" ID, mild steel
2	7959-0328	Torque arm pivot bracket profile
1	7959-0329	Gusset, torque arm bracket
1	E.20.120-048.000	ERW tube 1-1/4" x 48" long
1	E.26.134-052.000	ERW tube 1-5/8" x 52" long

INSTRUCTIONS

*The rearend housing must be positioned at intended ride height and correct pinion angle before proceeding.
Mockup and tack weld all components to verify position for correct operation.*

Installation Recommendations:

- Set pinion angle before positioning crossmember. Large changes to pinion angle greatly affect fore/aft position of the torque arm.
- Outer tubes can be angle slightly upward or downward for improved drivetrain or exhaust clearance.
- Position connector flanges so as not to interfere with exhaust.
- Fit and tack weld ALL tubes, brackets, and connectors to verify clearance before final welding.



WARRANTY NOTICE:

There are NO WARRANTIES, either expressed or implied. Neither the seller nor manufacturer will be liable for any loss, damage or injury, direct or indirect, arising from the use or inability to determine the appropriate use of any products. Before any attempt at installation, all drawings and/or instruction sheets should be completely reviewed to determine the suitability of the product for its intended use. In this connection, the user assumes all responsibility and risk. We reserve the right to change specification without notice. Further, Chris Alston's Chassisworks, Inc., makes **NO GUARANTEE** in reference to any specific class legality of any component. **ALL PRODUCTS ARE INTENDED FOR RACING AND OFF-ROAD USE AND MAY NOT BE LEGALLY USED ON THE HIGHWAY.** The products offered for sale are true race-car components and, in all cases, require some fabrication skill. **NO PRODUCT OR SERVICE IS DESIGNED OR INTENDED TO PREVENT INJURY OR DEATH.**

Chris Alston's Chassisworks
8661 Younger Creek Drive
Sacramento, CA 95828
Phone: 916-388-0288
Technical Support: sales@cachassisworks.com

