

READ ALL INSTRUCTIONS COMPLETELY AND THOROUGHLY UNDERSTAND THEM BEFORE DOING ANYTHING.
CALL CHASSISWORKS TECH SUPPORT (916) 388-0288 IF YOU NEED ASSISTANCE.

INSTALLATION GUIDE



6297

PRO Panhard Bar, 43" Length for 1982-2002 Camaro (F-Body)

Description:

PRO Panhard Bar with double-adjustable pivotball ends for PRO Torque Arm suspension; hardware included.

Applications: Camaro (F-Body 1982-2002)

PARTS LIST

6297 - PRO Panhard Bar, 43"

Qty	Part Number	Description
4	3120-056S-Y	Washer, 9/16" hardened, flat SAE
2	3138-14-2.00-Z	Locknut, 14mm-2.0 pitch, nylon insert
2	3139-14C-080-Y	Bolt, 14mm-2.0 pitch x 80mm
1	3144-25-28-0	Grease zerk, 1/4-28 straight
1	7959-0133	Panhard bar assembly, double-adjustable pivot ball, 43" center length

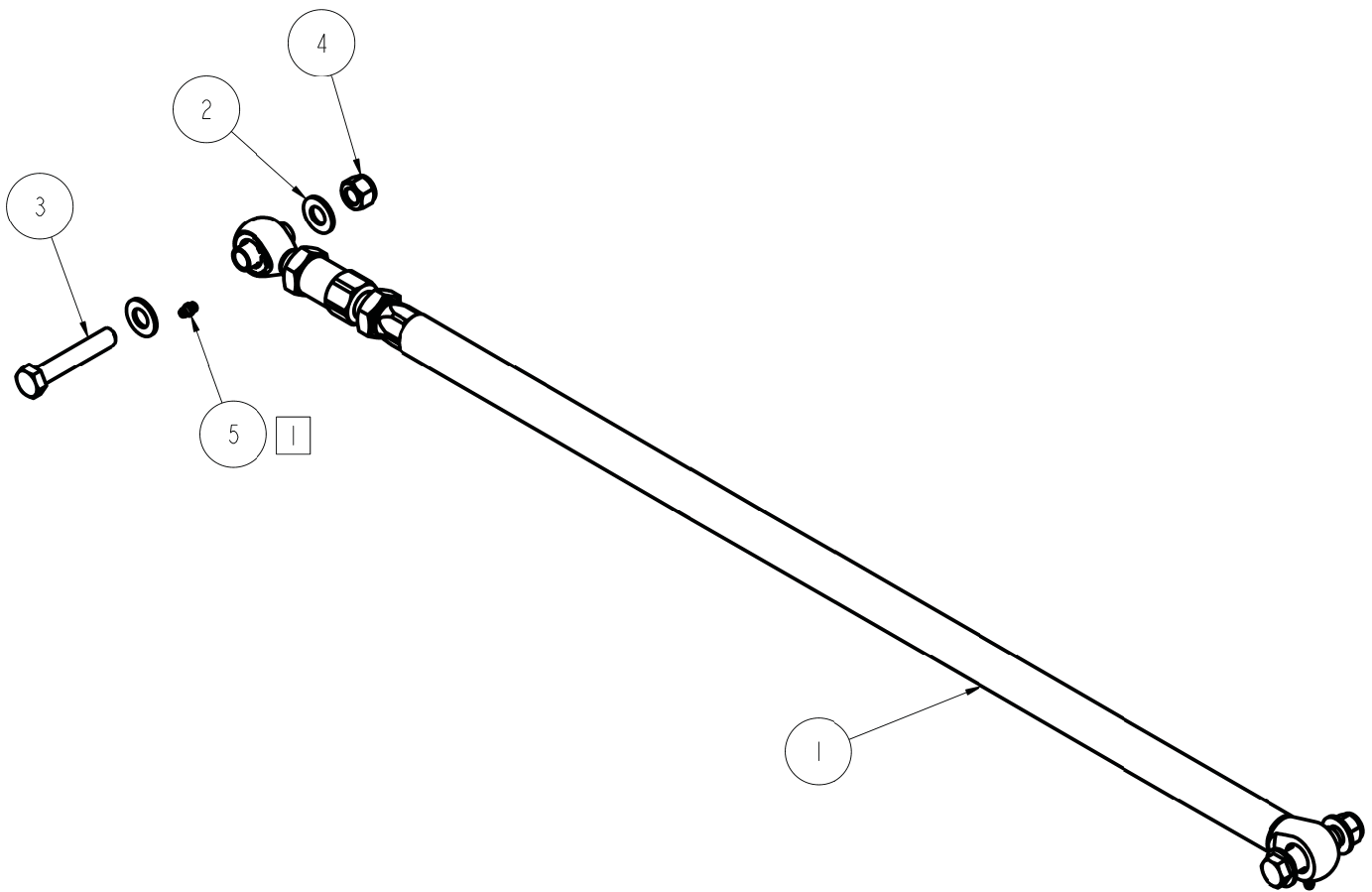
WARRANTY NOTICE:

There are NO WARRANTIES, either expressed or implied. Neither the seller nor manufacturer will be liable for any loss, damage or injury, direct or indirect, arising from the use or inability to determine the appropriate use of any products. Before any attempt at installation, all drawings and/or instruction sheets should be completely reviewed to determine the suitability of the product for its intended use. In this connection, the user assumes all responsibility and risk. We reserve the right to change specification without notice. Further, Chris Alston's Chassisworks, Inc., makes **NO GUARANTEE** in reference to any specific class legality of any component. **ALL PRODUCTS ARE INTENDED FOR RACING AND OFF-ROAD USE AND MAY NOT BE LEGALLY USED ON THE HIGHWAY.** The products offered for sale are true race-car components and, in all cases, require some fabrication skill. **NO PRODUCT OR SERVICE IS DESIGNED OR INTENDED TO PREVENT INJURY OR DEATH.**

Chris Alston's Chassisworks
8661 Younger Creek Drive
Sacramento, CA 95828
Phone: 916-388-0288
Technical Support: sales@cachassisworks.com



ITEM	QTY	PART NO.	DESCRIPTION
1	1	7959-0133	PANHARD BAR, DBL ADJ, 43.00 LONG, BALL PIVOT, 82-02 CAMARO/FIREBIRD
2	4	3120-056S-Y	FLAT WASHER, 9/16 SAE, HARDENED, YELLOW ZINC
3	2	3139-14C-080-Y	HEX BOLT, M14-2.00 x 80MM, GRADE 10.9, YELLOW ZINC
4	2	3138-14-2.00-Z	LOCKNUT, 14MM-2.00, CLASS 8, NYLON INSERT, CLEAR ZINC
5	1	3144-25-28-0	GREASE ZERK 1/4-28 STRAIGHT



NOTES:
 I. TO LUBRICATE: REMOVE SET SCREW AND INSTALL SUPPLIED GREASE ZERK (3144-25-28-0) REPLACE SET SCREW WHEN COMPLETE

DESCRIPTION		PRO PANHARD BAR, DA, PIVOT BALL, G3/G4 CHEVROLET CAMARO	
<i>Chris Aston's</i> CHASSISWORKS INC. 8661 YOUNGER CREEK DRIVE SACRAMENTO, CA 95828 (916) 388-0288 FAX 388-0295		PART NO.	6297
		2/11/16	DWG: 916297