

READ ALL INSTRUCTIONS COMPLETELY AND THOROUGHLY UNDERSTAND THEM BEFORE DOING ANYTHING.
CALL CHASSISWORKS TECH SUPPORT (916) 388-0288 IF YOU NEED ASSISTANCE.

INSTALLATION GUIDE



8378-15 g-Street 15" Front Brake Kit for Centerlock Aluminum Upright



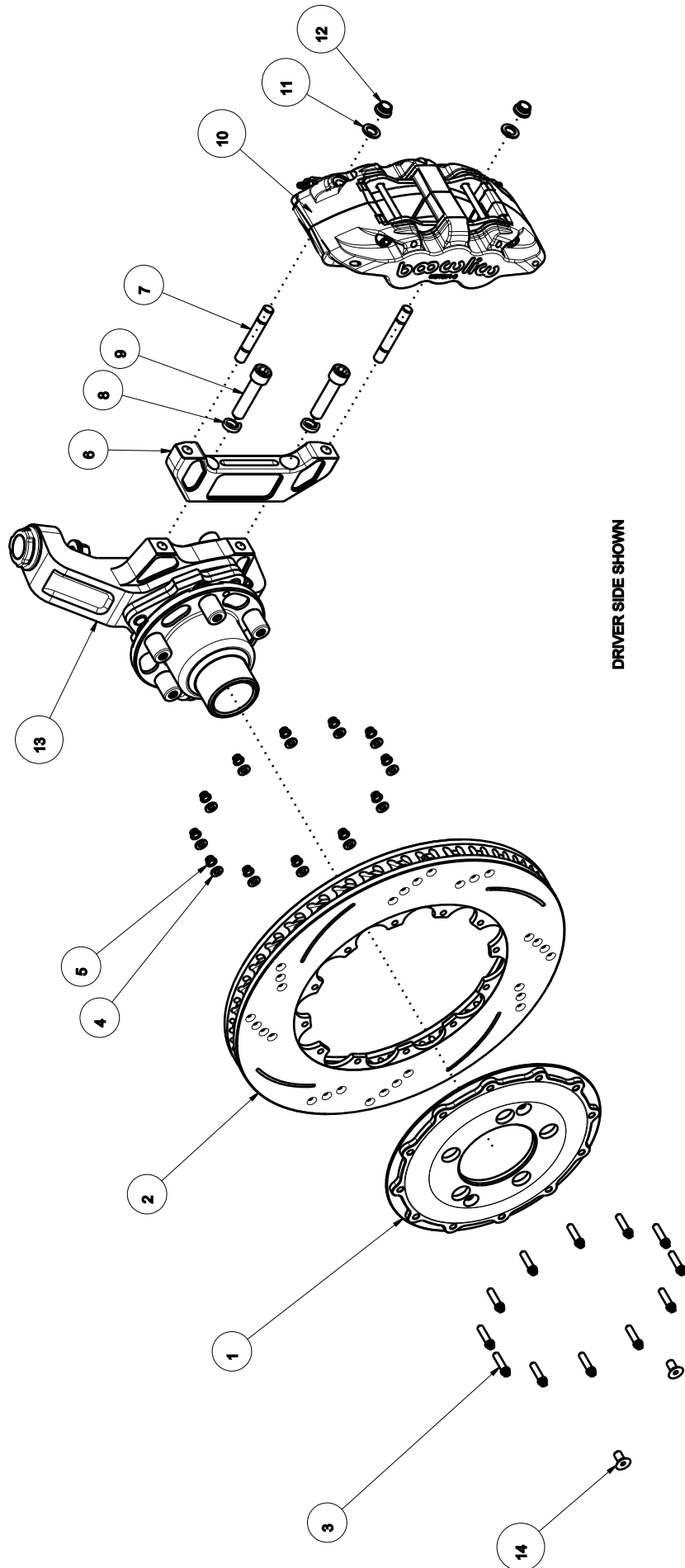
Description: g-Street 15" Front Brake Kit for Chassisworks gStreet Centerlock Aluminum Upright System

Includes: 15" vented rotor, billet-aluminum hat, 6-piston radial mount caliper, caliper mounting bracket, brake pads, aircraft grade mounting hardware

Clearance Notes: Caliper extends past hub face 1.48". Caliper outside maximum diameter is 16.72". Minimum wheel diameter is 19".

ITEM	QTY	PART NO.	DESCRIPTION
1	1	7963-238	HAT, 12 x 1/4 x ϕ 8 3/4 BC, ϕ 9.770 OD, .25 OFFSET, 5x13/16x4.75 BC, CENTERLOCK
2	1	160-11757-BK	ϕ 15 x 1.25 SRP ROTOR, 12 x ϕ 8.75 HAT MNT, WILWOOD
3	12	3122-025F1.00Y	12 POINT CAP SCREW, HIGH TORQUE, 1/4-28 x 1.0, GRADE 8, YELLOW ZINC
4	12	3109-025-S-2-Y	AIRCRAFT WASHER 1/4 x .062 THICK
5	12	3188-025-028Y	FLANGED LOCKNUT, 12 POINT H20, 1/4-28, YELLOW ZINC
6	1	7964-023	CALIPER ADAPTER, 15" ROTOR, WW 6 PISTON W6A RADIAL MNT, GSTREET ALUM KNUCKLE
7	2	3163-07FC-3.00	STUD 7/16-20 x .625 x 7/16-14 x .6, 3.00 OAL
8	2	3108-050H-C	HIGH COLLAR LOCK WASHER, n 1/2, STEEL, ZINC
9	2	3103-050C2.25C	SOCKET HEAD CAP SCREW, 1/2-13 x 2 1/4, GRADE 8, CLEAR ZINC
10	1	WW 120-13290-BK	CALIPER, WILWOOD AERO6, LH, RADIAL MOUNT, 1.25 ROTOR, BLACK
11	2	3109-044-S-2-Y	AIRCRAFT WASHER 7/16 x .062 THICK
12	2	3188-044-020K	FLANGED LOCKNUT, 12 POINT H93, 7/16-20, YELLOW ZINC
13	1	7964-086-4.75	UPRIGHT ASSEMBLY, DRIVER, GSTREET, ALUMINUM, UNIT HUB-D, CENTERLOCK
14	2	3105-031F0.63B	FLAT HEAD SOCKET SCREW, 5/16-24 x 5/8, BLACK OXIDE

DESCRIPTION		BRAKE KIT, 15 x 1 1/4 SLOTTED/DRILLED, 6 PISTON RS, G/S ALUM KNUCKLE, CENTERLOCK	
PART NO.		8378-15	
Chris Adams's CHASSISWORKS INC.		6661 YOUNGER CREEK DRIVE SACRAMENTO, CA 95828 (916) 388-0288 FAX 388-0295	
DWG:		918378-15	
DATE:		6/27/17	



DRIVER SIDE SHOWN

PARTS LIST

8378-15 - gStreet 15" Front Brake Kit for Centerlock Aluminum Upright

Qty	Part Number	Description
1	3931-AERO-15	Hardware bag for gStreet 15" front brake kit
1	WW 160-13472-BK	Rotor SRP black e-coated, 15" x 1.25" passenger side
1	WW 160-13473-BK	Rotor SRP black e-coated, 15" x 1.25" driver side

3931-AERO-15 - Hardware Bag

Qty	Part Number	Description
4	3103-050C1.75C	Socket head, 1/2-13 x 1-3/4", clear zinc
4	3105-031F0.63B	Flat head, 5/16-24 x 5/8", black
4	3108-050H-C	High collar lockwasher, 1/2", clear zinc
24	3109-025-S-2-Y	Aircraft washer, 1/4" small OD
4	3109-044-S-2-Y	Aircraft washer, 7/16" small OD
24	3122-025F1.00Y	Flanged bolt 12-point, 1/4-28 x 1" Grade 8, yellow zinc
4	3163-07FC-3.00	Stud, 7/16-20 x 7/16-14 x 3.00"
24	3188-025-28Y	Flanged locknut, 12-point, 1/4-28
4	3188-044-20-B	Flanged locknut, 12-point, 7/16-20
2	7963-238	Rotor hat, .25" offset with 3.465" pilot
2	7964-023	Caliper adapter bracket for 15" rotor, gStreet billet upright

Caliper Options

Qty	Part Number	Description
1	WW 120-13289-BK	Wilwood Aero6 6-piston, passenger side, black powder coat (included)
1	WW 120-13290-BK	Wilwood Aero6 6-piston, driver side, black powder coat (included)
1	WW 120-13289-RD	Wilwood Aero6 6-piston, passenger side, red powder coat
1	WW 120-13290-RD	Wilwood Aero6 6-piston, driver side, red powder coat
1	WW 120-13289-N	Wilwood Aero6 6-piston thermlock, passenger side, nickle plate
1	WW 120-13290-N	Wilwood Aero6 6-piston thermlock, driver side, nickle plate

Brake Pad Options

Qty	Part Number	Description
1	WW 150-9489K	Street performance/racing brake pads (street) (included)
1	WW 15E-12604K	Street performance/racing brake pads, PolyMatrix E (autocross)
1	WW 150B-9978K	High temperature racing pads, PolyMatrix B (race)

INSTRUCTIONS

Brake Installation

1. NOTE: Wheel clearance with the 14"-diameter rotor is critical. Most 18"-diameter wheels will fit. You must check the wheel to be sure you have proper clearance. The caliper will extend 1.48" toward the wheel from the hub surface and the minimum diameter at this position is 16.0". Check your wheel before trying them over the brake kit. Verify you have at least 1/4" of wheel clearance from all brake components. Scratched or damaged hubs, rotors, calipers or mounts are non-returnable for any reason. Using masking tape when test fitting components is recommended.
2. The 14 x 1.25-inch drilled-slotted rotors are directional. There is an arrow on the flat side of the rotor that must point in the correct rotation direction.
3. Bolt the rotor and hat together using the twelve 1/4" 12-point screws, washers, and locknuts. Refer to assembly diagram for hardware orientation. Tighten to 155 lb-in (12.9 lb-ft) of torque. You must hold the bolts with a wrench while tightening the locknuts. Repeat this for the passenger side.
4. Use the 1/2-13 x 1-3/4" socket head Allens and high-collar lockwashers provided in your brake kit to mount the caliper adapters to the spindle bosses. The beveled side of the bracket faces away from the rotor; refer to diagram for clarification. Tighten to 70 lb-ft of torque. Loctite™ is also recommended.
5. Set the hat and rotor assembly onto the hub in preparation for the caliper. A couple lug nuts can be used to secure the rotor.
6. Place the caliper over the studs and secure using 7/16" 12-point locknuts and flat washers. If you are trial fitting use regular nuts; not included. Locknuts are intended for single use.
7. Install the brake pads into the caliper by removing the retaining rings and calipers pins.
8. Rotate the rotor assembly slowly to check for any clearance problems between the rotor and the caliper. Make sure the rotor does not drag on the brake pads.
9. Once everything is checked, tighten the caliper-stud flange nuts to 47 lb-ft.
10. Finally, bolt your wheel and tire on the hub and check again to be sure there is at least 1/4" clearance between the caliper and the wheel. There are differences in wheel manufacturer's tolerances. Make sure your wheel turns freely and does not rub on the caliper. Test both sides.



WARRANTY NOTICE:

There are NO WARRANTIES, either expressed or implied. Neither the seller nor manufacturer will be liable for any loss, damage or injury, direct or indirect, arising from the use or inability to determine the appropriate use of any products. Before any attempt at installation, all drawings and/or instruction sheets should be completely reviewed to determine the suitability of the product for its intended use. In this connection, the user assumes all responsibility and risk. We reserve the right to change specification without notice. Further, Chris Alston's Chassisworks, Inc., makes **NO GUARANTEE** in reference to any specific class legality of any component. **ALL PRODUCTS ARE INTENDED FOR RACING AND OFF-ROAD USE AND MAY NOT BE LEGALLY USED ON THE HIGHWAY.** The products offered for sale are true race-car components and, in all cases, require some fabrication skill. **NO PRODUCT OR SERVICE IS DESIGNED OR INTENDED TO PREVENT INJURY OR DEATH.**

Chris Alston's Chassisworks
8661 Younger Creek Drive
Sacramento, CA 95828
Phone: 916-388-0288
Technical Support: sales@cachassisworks.com

