

READ ALL INSTRUCTIONS COMPLETELY AND THOROUGHLY UNDERSTAND THEM BEFORE DOING ANYTHING.
CALL CHASSISWORKS TECH SUPPORT (916) 388-0288 IF YOU NEED ASSISTANCE.

INSTALLATION GUIDE



8324-136

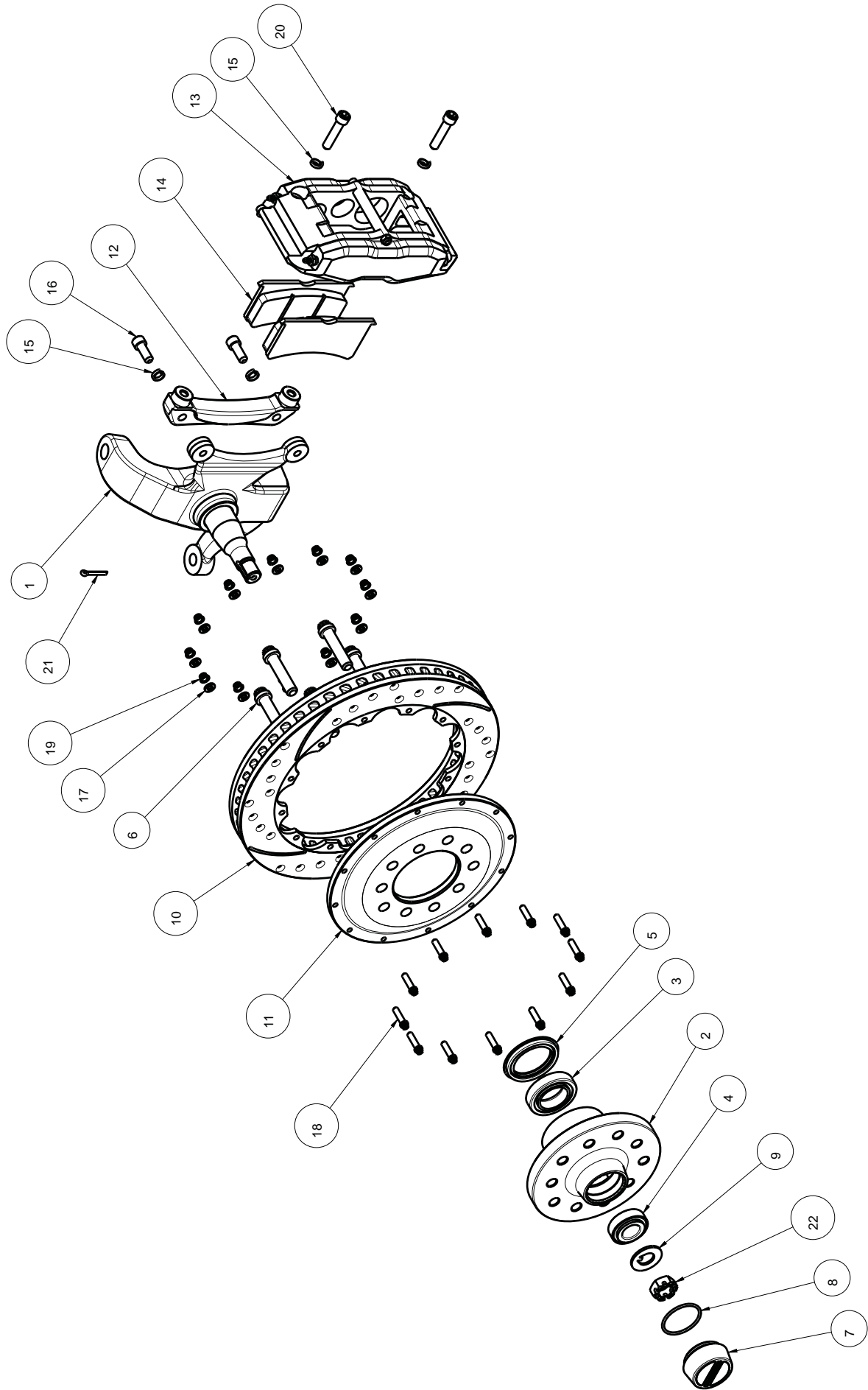
**g-Street 13" 6 Piston Front Disc Brake for
Chassisworks Sculpted Spindles**



Description: g-Street front disc-brake for Street Machine spindle. Minimum wheel diameter of 17" is required for use. Not for use with positive offset wheels.

Includes: 6-piston calipers with pads, 13" vented rotors, billet-aluminum hat and hub, wheel studs and bearings, and necessary mounting hardware.

Applications: Chassisworks front suspension systems with Street Machine spindles.



DRIVER SIDE SHOWN

ITEM	QTY	PART NO.	DESCRIPTION
1	1	3703	SPINDLE, CHASSISWORKS 2" DROP FRONT STEER DRIVER W/SHAFT
2	1	1317	HUB FOR CHASSISWORKS SPINDLE
3	1	3352-3353	TIMKEN BEARING, CUP=L68110, CONE=L68149
4	1	3354-3355	TIMKEN BEARING, CUP=LM12710, CONE= LM12749
5	1	3631	SEAL, GREASE 2.500x1.940x.250
6	5	3130-050F2.25B	12 POINT CAP SCREW, 1/2-20 x 2 1/4, GRADE 8, BLACK OXIDE
7	1	1306	FRONT HUB CAP
8	1	3537	O-RING, HUB CAP 1.943 x 1.737 x .103
9	1	2019	SPINDLE WASHER ϕ 1 1/2 x ϕ 3/4 .105 THICK, .180 x .110 KEY TANG
10	1	160-7173-BK	ϕ 12.88 x 1.25 SRP ROTOR 12 x ϕ 8.75 HAT MNT, WILWOOD
11	1	1332	HAT, 12 x 1/4-28 x 8 7/8 BC, .738 OFFSET, 5 x 1/2 x 4.5/4.75 BC
12	1	1416	CALIPER ADAPTER, SL6R 6 PISTON, 12.88 x 1.25 ROTOR
13	1	120-11779-BK	CALIPER, SL6R RADIAL MOUNT - 14 x 1.25 ROTOR
14	2	WW 150-9415K	BRAKE PAD, SL6, STREET PERFORMANCE, BP-20
15	4	3108-038H-C	HIGH COLLAR LOCKWASHER, 3/8 STEEL, CLEAR ZINC
16	2	3103-038F1.00C	SOCKET HEAD CAP SCREW, GRADE 8, 3/8-24 x 1, CLEAR ZINC
17	12	3109-025-S-2-Y	AIRCRAFT WASHER 1/4 x .062 THICK
18	12	3122-025F1.00Y	12 POINT CAP SCREW, HIGH TORQUE, 1/4-28 x 1.0, GRADE 8, YELLOW ZINC
19	12	3188-025-028Y	FLANGED LOCKNUT, 12 POINT H20, 1/4-28, YELLOW ZINC
20	2	3103-038C1.75C	SOCKET HEAD CAP SCREW, GRADE 8, 3/8-16 x 1 3/4, CLEAR ZINC
21	1	3145.156-1.00	COTTER PIN, 5/32 x 1
22	1	3630	SPINDLE NUT, 3/4-20 CASTLE STYLE

DESCRIPTION	G-STREET 13.0 x 1.25 BRAKES, S/M SPINDLE, SL6R CALIPER	
	Chris Alston's CHASSISWORKS INC. 8661 YOUNGER CREEK DRIVE SACRAMENTO, CA 95828 (916) 388-0288 FAX 388-0295	PART NO. 8324-136
	11/14/17	DWG: 918324-136

PARTS LIST

8324-136 - g-Street 13" Disc Brake

Qty	Part Number	Description
1	3920	Anodized hub kit with 2-1/4" wheel studs (pair)
1	3928	Adapter kit 12.88 x 1-1/4" rotor with 6 piston calipers (pair)
1	WW 160-7172-BK	Rotor SRP 1.25 x 12.88" passenger side, slotted & drilled, black E-coated
1	WW 160-7173-BK	Rotor SRP 1.25 x 12.88" driver side, slotted & drilled, black E-coated

3920 - Anodized Hub Kit

2	3353	Inner bearing cone 1.3775 ID
2	3355	Outer bearing cone .8656 ID
2	3631	Grease seal 2.5 x 1.94 x .250
2	3754	Front hub assembly anodized with races and screw-on cap
1	903920	Hardware bag

903920 - Hardware Bag

4	3103-038C1.38C	Socket head 3/8-16 x 1-3/8 clear zinc plated
4	3108-038H-S	Lock washer 3/8 high collar .377 x .550" OD
10	3130-050F2.25B	Bolt 12-point head 1/2-20 x 2-1/4" long with integral washer
4	3157-038S-S	Stainless 3/8 washer .406 x .812" OD x 1/16" thick

3928 - Adapter Kit

2	1332	Hat .738 offset, 12 x 1/4-28 x 8-7/8" bolt circle, with 5 x 4.5" & 4.75" bolt circles
2	1416	Calper adapter SL6R 6 piston, 12.88 x 1.25" rotor
1	903928	Hardware bag

903928 - Hardware Bag

4	3103-038C1.00C	Socket head 3/8-16 x 1" cap screw, Grade 8, clear zinc plated
4	3103-038C1.75C	Socket head 3/8-16 x 1-3/4" cap screw, Grade 8, clear zinc plated
8	3108-038H-S	High collar lock washer 3/8", 18-8 stainless
24	3109-025-S-2-Y	Aircraft washer 1/4" small OD
24	3122-025F1.00Y	12 point flange bolt 1/4-28 x 1"
24	3188-025-28Y	Flanged locknut 1/4-28, 12-point

Calipers and Pads (OPTION - Black)

1	WW 120-11778-BK	Forged SL6R 1-1/4" wide caliper passenger side rear mount, black finish
1	WW 120-11779-BK	Forged SL6R 1-1/4" wide caliper driver side rear mount, black finish
1	WW 15Q-6828K	SL6 Pad premium street Polymatrix-Q, (set of 4)

Calipers and Pads (OPTION - Red)

1	WW 120-11778-RD	Forged SL6R 1-1/4" wide caliper passenger side rear mount, red finish
1	WW 120-11779-RD	Forged SL6R 1-1/4" wide caliper driver side rear mount, red finish
1	WW 15Q-6828K	SL6 Pad premium street Polymatrix-Q, (set of 4)

INSTRUCTIONS

Brake Installation

1. NOTE: Wheel clearance with the 13"-diameter rotor is critical. Most 17"-diameter wheels will fit. You must check the wheel to be sure you have proper clearance. The caliper will extend .50" toward the wheel from the hub surface and the minimum diameter at this position is 14.75". Check your wheel before trying them over the brake kit. Verify you have at least 1/4" of wheel clearance from all brake components. Scratched or damaged hubs, rotors, calipers or mounts are non-returnable for any reason.
2. The 12.88 x 1.25 inch drilled-slotted rotors are directional. There is an arrow on the flat side of the rotor that must point in the correct rotation direction.
3. Thread the twelve 1/4 x 1" 12-point bolts into the hat. Tighten to 8.5 lb-ft or 103 lb-in of torque. Set the driver side rotor on the bolts you just installed with the flanged side of the rotor toward the hat. Slide the 1/4" aircraft washers over the bolts and then the slide on the 12-point flanged locknuts. Tighten those to 14 lb-ft or 168 lb-in of torque. You must hold the bolts with a wrench while tightening the locknuts. Repeat this for the passenger side.
4. The billet-aluminum hubs have threaded-stud mounting holes for both 4-1/2" and 4-3/4" bolt circles. Choose the bolt circle that matches your wheels and chase the threads with a 1/2-20 tap. After chasing the threads, it is a good idea to blow them out with an air hose, making sure no debris remains in the holes.
5. Set the driver side hat and rotor assembly on the backside of the billet hub. Line up the bolt circles on the hub with those on the rotor. Up near the head of the 1/2-20 x 2 1/4" 12-point wheel studs add a drop of Loctite™ and then insert the studs through the proper series of holes. Insert all the wheel studs and tighten them from the backside of the assembly. Tighten to 40 lb-ft of torque. Three-inch studs can be purchased if you have thick wheels.
6. The bearing races are pressed in the billet hub from the factory. You must pack the wheel bearing before installing it. Use a wheel-bearing packer to do this. If you do not have one available, hand packing the bearing is okay. If you are unsure how to pack the bearing, refer to an auto repair manual for assistance.
7. After the bearing is packed, drop it into the bearing race. The inner wheel bearing seal is then positioned on the hub.
8. Place the hub on a wood surface before installing the seal. Using a hammer and seal installer, drive the seal into the hub making sure its fully seated.
9. With the inner bearing and seal in place, slide the hub and rotor assembly onto the correct spindle (remember, the slotted rotors are directional).
10. Pack the outer wheel bearing as you did the inner one. Slide the bearing into the race.
11. Slide the washer over the spindle shaft and install the castle nut.
12. To fully seat the bearings, tighten the castle nut to 12 lb-ft while turning the rotor assembly forward by hand. This will remove any grease that could cause excessive wheel bearing play. Back off the castle nut to the "just loose" position and then hand tighten. There will be .001 to .005 inches of endplay when the wheel bearings are properly adjusted.
13. After the wheel bearings are tight, insert the cotter pin through the castle nut and the hole in the end of the spindle shaft. Do not tighten the castle nut when aligning the cotter pin, only loosen it. Fold the cotter pin legs to secure the castle nut.
14. Apply anti-seize to the threads of the screw-on dust cap. Screw the dust cap onto the hub. It only needs to be hand tightened, the O-ring inside will keep it from coming loose.

15. Use the 3/8-16 x 1" socket head Allens and high collar lockwashers provided in your brake kit to mount the caliper adapters to the spindle bosses. The high collar lockwasher goes against the head of the fastener. Tighten to 30 lb-ft of torque.
16. Install the Wilwood brake calipers and pads. Start by inserting the brake pads into the caliper, one on each side of the rotor slot with the metal backing toward the pistons.
17. Slide the 3/8" high collar lockwashers over the 3/8"-16 x 1-3/4" caliper mounting bolts. Insert the bolts through the caliper into the caliper adapter. Use an Allen wrench to tighten until snug. Rotate the rotor assembly slowly to check for any clearance problems between the rotor and the caliper. Make sure the rotor does not drag on the brake pads. The caliper can be shimmed where it attaches to the caliper bracket to adjust the pad clearance in relation to the rotor. Once everything is checked, tighten to 30 lb-ft of torque.
18. Finally, bolt your wheel and tire on the hub and check again to be sure there is at least 1/4" clearance between the caliper and the wheel. There are differences in wheel manufacturer's tolerances. Make sure your wheel turns freely and does not rub on the caliper.

WARRANTY NOTICE:

There are NO WARRANTIES, either expressed or implied. Neither the seller nor manufacturer will be liable for any loss, damage or injury, direct or indirect, arising from the use or inability to determine the appropriate use of any products. Before any attempt at installation, all drawings and/or instruction sheets should be completely reviewed to determine the suitability of the product for its intended use. In this connection, the user assumes all responsibility and risk. We reserve the right to change specification without notice. Further, Chris Alston's Chassisworks, Inc., makes **NO GUARANTEE** in reference to any specific class legality of any component. **ALL PRODUCTS ARE INTENDED FOR RACING AND OFF-ROAD USE AND MAY NOT BE LEGALLY USED ON THE HIGHWAY.** The products offered for sale are true race-car components and, in all cases, require some fabrication skill. **NO PRODUCT OR SERVICE IS DESIGNED OR INTENDED TO PREVENT INJURY OR DEATH.**

Chris Alston's Chassisworks
8661 Younger Creek Drive
Sacramento, CA 95828
Phone: 916-388-0288
Technical Support: sales@cachassisworks.com

