

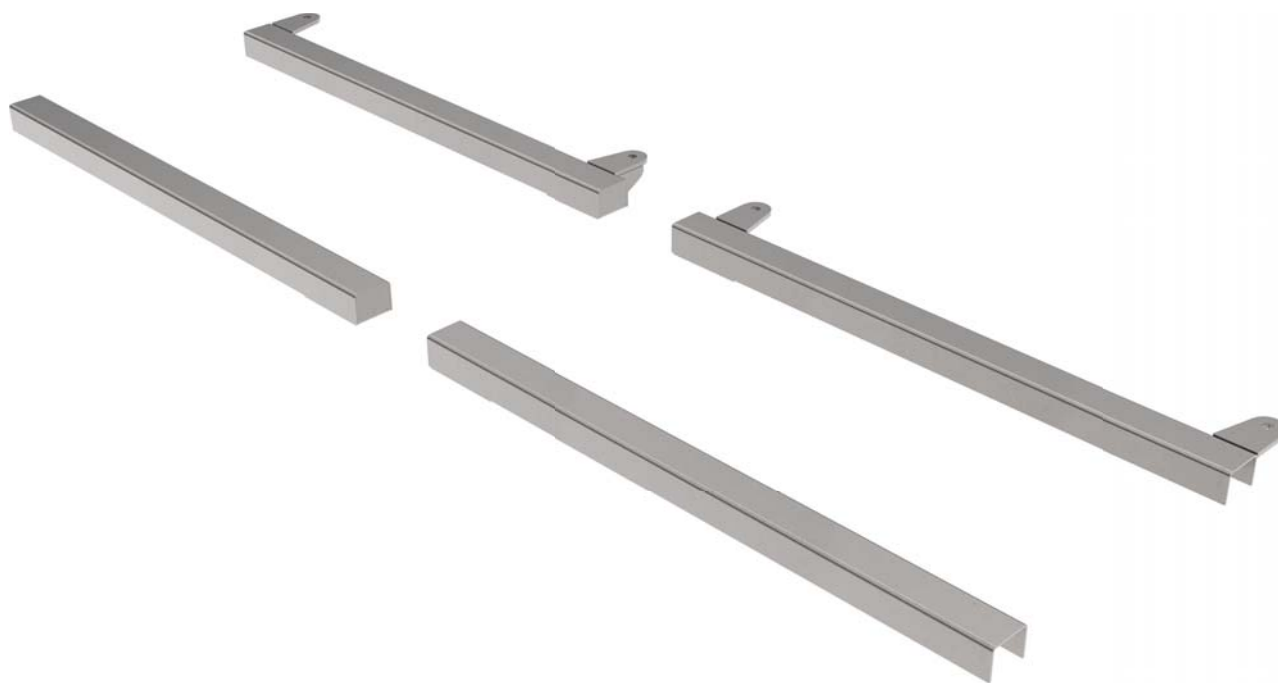
READ ALL INSTRUCTIONS COMPLETELY AND THOROUGHLY UNDERSTAND THEM BEFORE DOING ANYTHING.
CALL CHASSISWORKS TECH SUPPORT (916) 388-0288 IF YOU NEED ASSISTANCE.

INSTALLATION GUIDE



5909-SCH

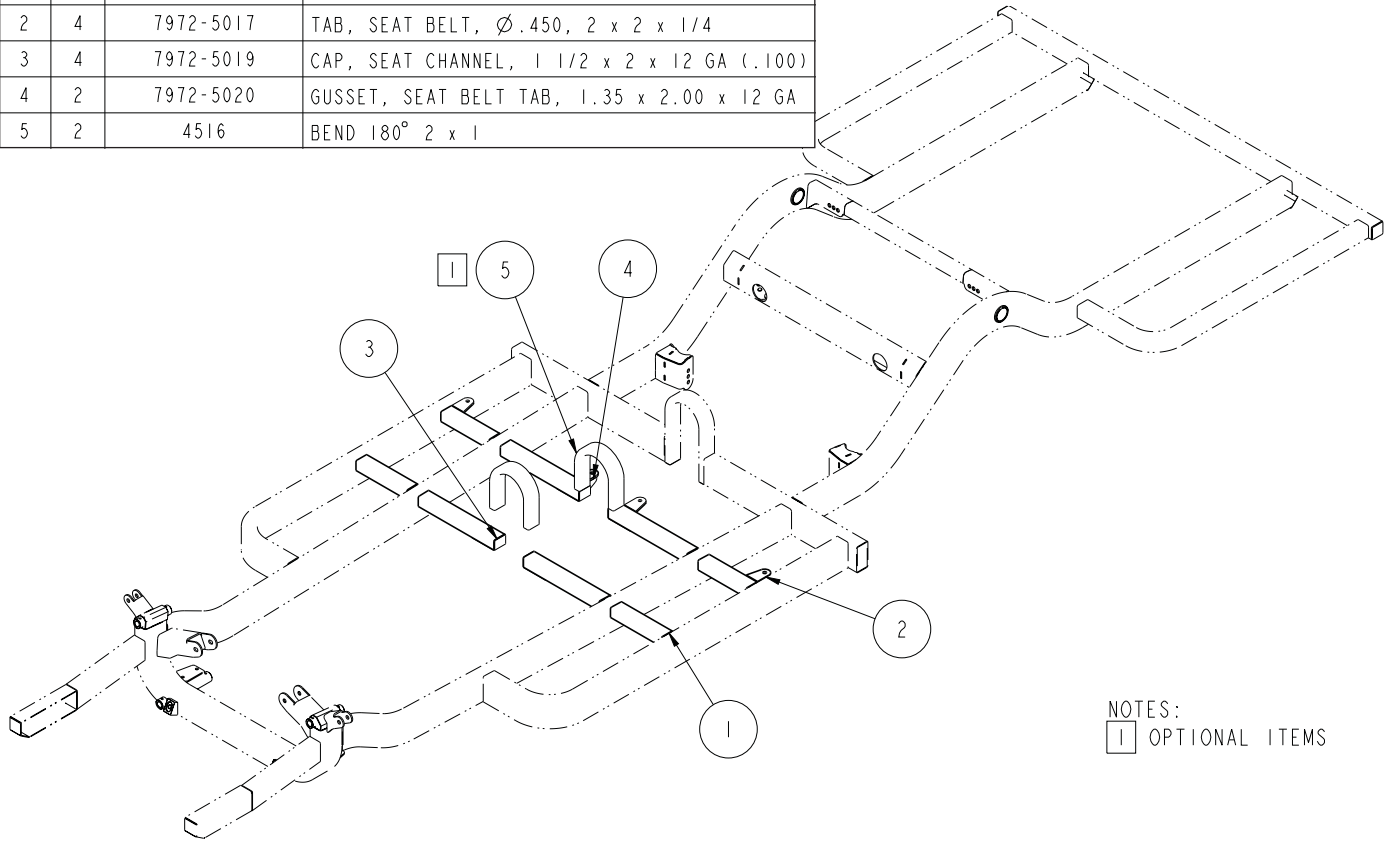
Seat Channels with Seat Belt Mounts



Description: Seat channels and seat belt mounts for custom-fit installation. Channels must be trimmed to fit and possibly cut into multiple segments depending upon frame style. Includes 1-1/2" x 2" x 30" C-channel lengths, driveshaft-side end caps, seat belt mounting tabs and gussets.

Straight-Rail Frame Style

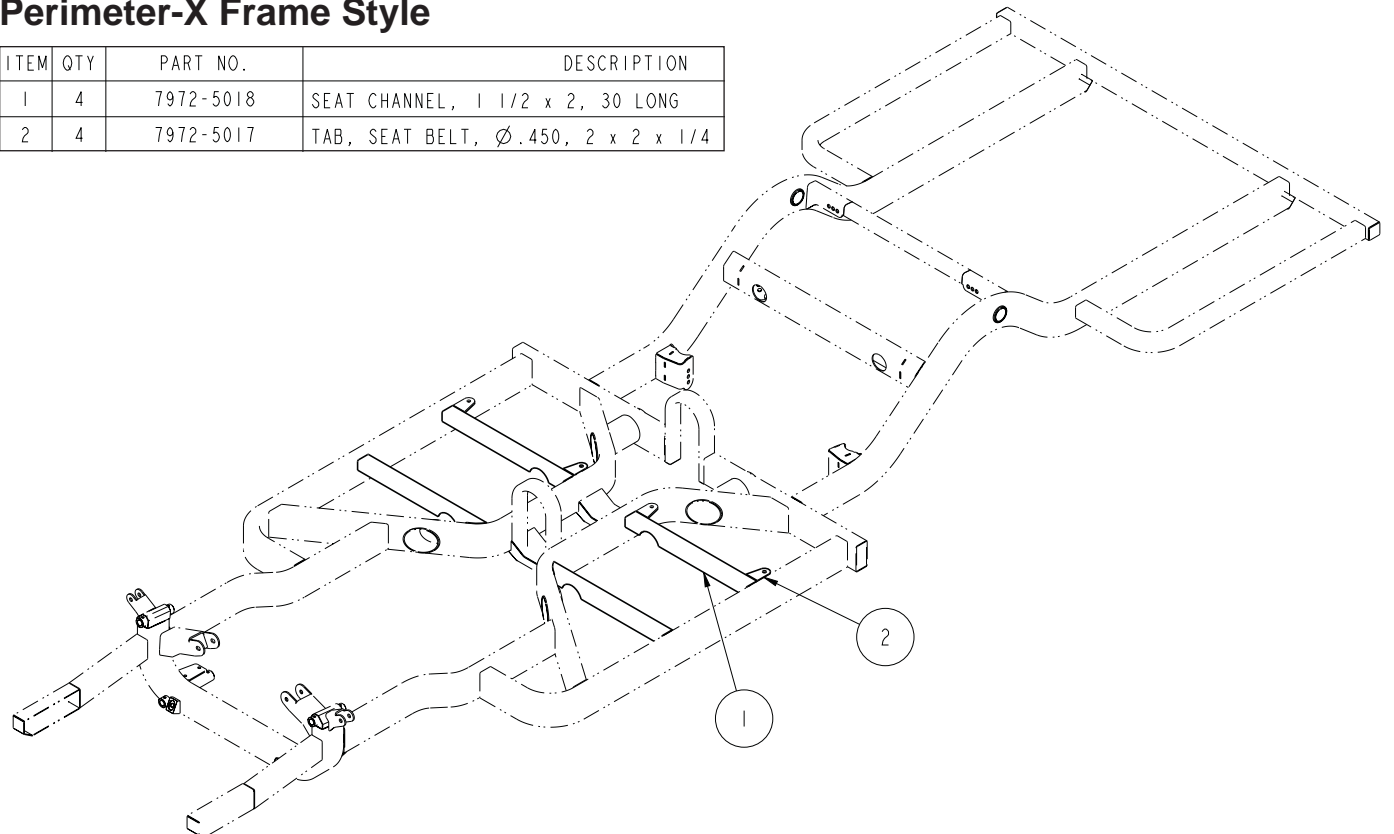
ITEM	QTY	PART NO.	DESCRIPTION
1	4	7972-5018	SEAT CHANNEL, 1 1/2 x 2, 30 LONG
2	4	7972-5017	TAB, SEAT BELT, \varnothing .450, 2 x 2 x 1/4
3	4	7972-5019	CAP, SEAT CHANNEL, 1 1/2 x 2 x 12 GA (.100)
4	2	7972-5020	GUSSET, SEAT BELT TAB, 1.35 x 2.00 x 12 GA
5	2	4516	BEND 180° 2 x 1



NOTES:
 1 OPTIONAL ITEMS

Perimeter-X Frame Style

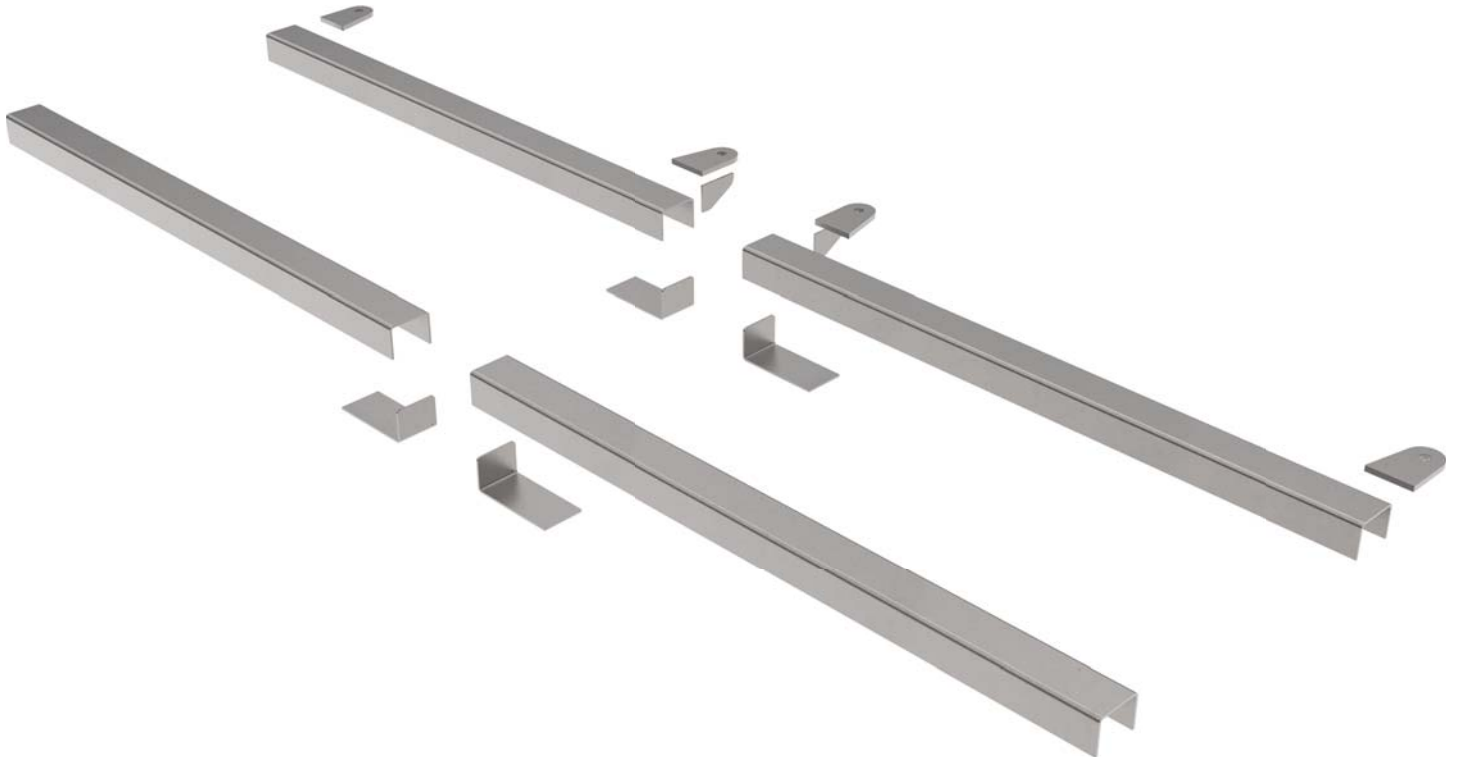
ITEM	QTY	PART NO.	DESCRIPTION
1	4	7972-5018	SEAT CHANNEL, 1 1/2 x 2, 30 LONG
2	4	7972-5017	TAB, SEAT BELT, \varnothing .450, 2 x 2 x 1/4



PARTS LIST

5909-SCH - Seat Channel with Seat Belt Mounts

Qty	Part Number	Description
4	7972-5017	Seat belt mount tab, 3/16"-thick x 2"-long
4	7972-5018	Seat channel, 1-1/2" x 2" x 30"
4	7972-5019	End cap for seat channel
2	7972-5020	Seat belt tab gusset



INSTRUCTIONS

To provide a stable mounting structure and allow access for through-floor mounting hardware 1-1/2" x 2" steel C-channel material was selected for use. Channels are trimmed to required length depending upon frame style and have a maximum assembly width of 67". Channel caps are used on Straight-Rail style frames only for added support at the driveshaft hoop joint; hoop sold separately.

Seat belt mounting tabs are installed along the back edge of the rear seat channel and must be supported along a second edge; either the frame rail or tab gusset used at the driveshaft hoop on Straight-Rail frames.

WARRANTY NOTICE:

There are NO WARRANTIES, either expressed or implied. Neither the seller nor manufacturer will be liable for any loss, damage or injury, direct or indirect, arising from the use or inability to determine the appropriate use of any products. Before any attempt at installation, all drawings and/or instruction sheets should be completely reviewed to determine the suitability of the product for its intended use. In this connection, the user assumes all responsibility and risk. We reserve the right to change specification without notice. Further, Chris Alston's Chassisworks, Inc., makes **NO GUARANTEE** in reference to any specific class legality of any component. **ALL PRODUCTS ARE INTENDED FOR RACING AND OFF-ROAD USE AND MAY NOT BE LEGALLY USED ON THE HIGHWAY.** The products offered for sale are true race-car components and, in all cases, require some fabrication skill. **NO PRODUCT OR SERVICE IS DESIGNED OR INTENDED TO PREVENT INJURY OR DEATH.**

Chris Alston's Chassisworks
8661 Younger Creek Drive
Sacramento, CA 95828
Phone: 916-388-0288
Technical Support: sales@cachassisworks.com

