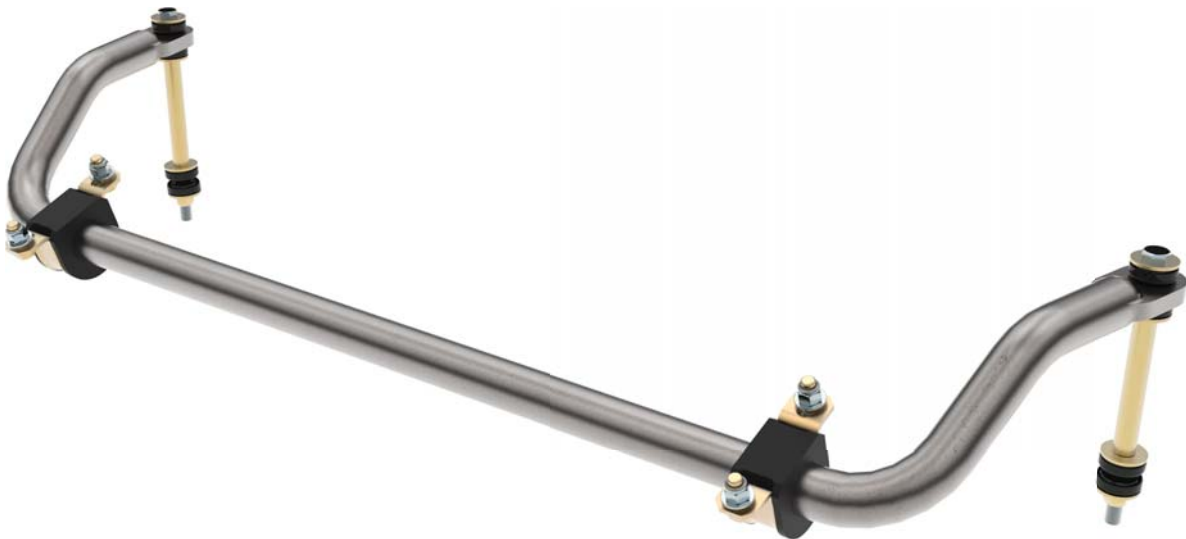


READ ALL INSTRUCTIONS COMPLETELY AND THOROUGHLY UNDERSTAND THEM BEFORE DOING ANYTHING.
CALL KP COMPONENTS TECH SUPPORT (916) 388-0288 IF YOU NEED ASSISTANCE.

INSTALLATION GUIDE



KPC ARFDCS-22 Anti-Roll Bar for Dropped Crossmember 1960-87 Chevrolet C10 Pickup



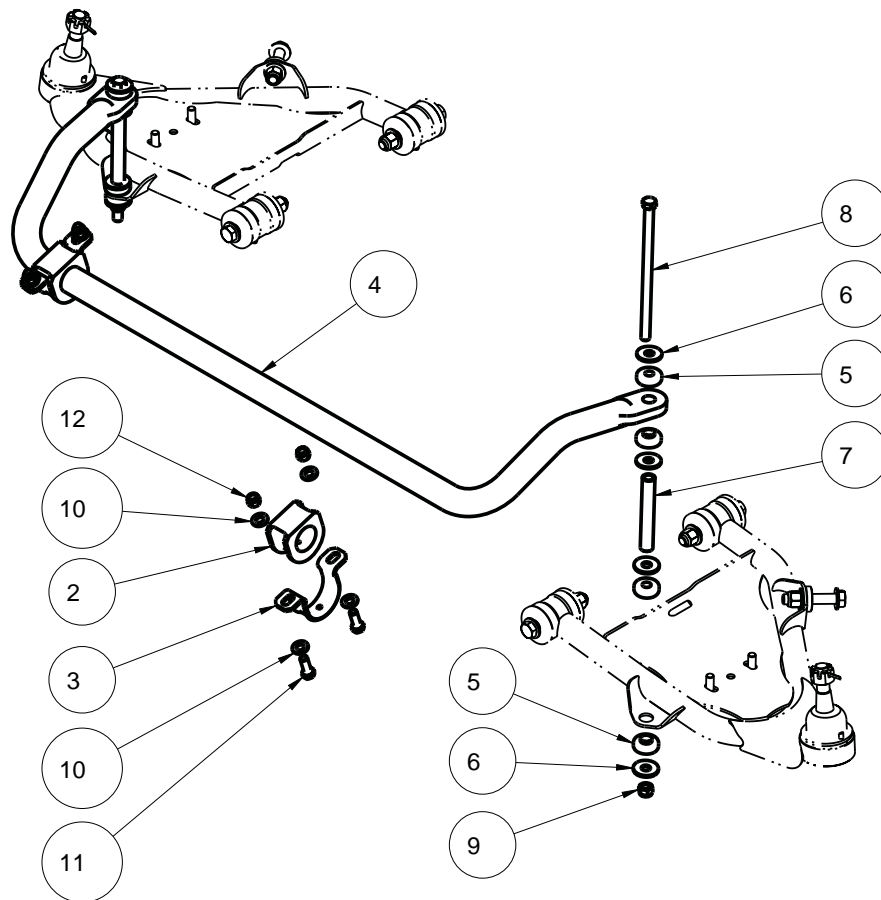
Description:

Front anti-roll bar, 1-3/8"-diameter solid bar with endlinks, bushing mounts, and endlink mounting hardware. For KP Components dropped crossmember with LayArm lower control arms.

Applications:

1960-1987 Chevrolet/GMC C10

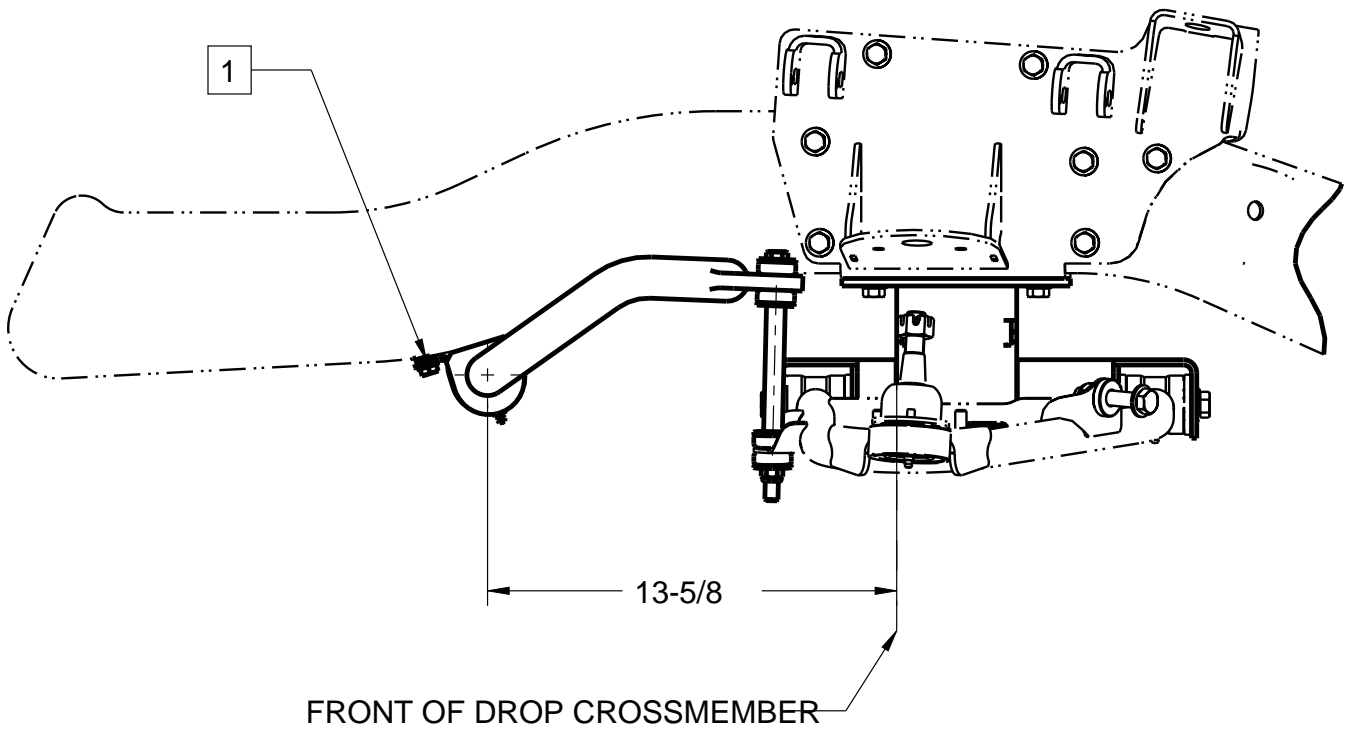
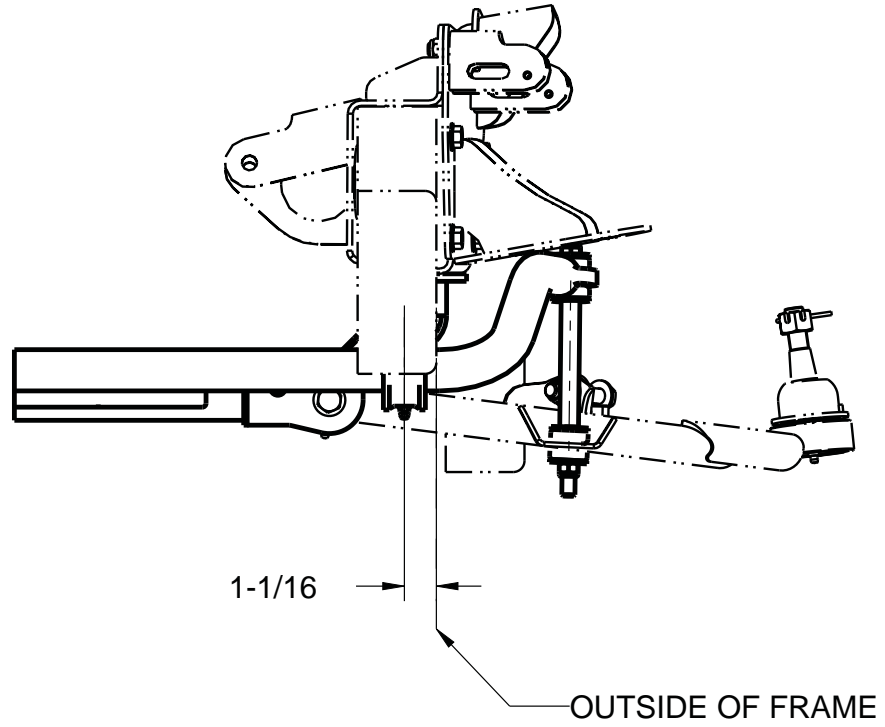
ITEM	QTY	PART NO.	DESCRIPTION
1	1	7933-113	LOWER CONTROL ARM ASSY, PSGR, 71-87 GM C10 DROPPED CROSSMEMBER
2	2	3150-F1.38-B	POLYURETHANE BUSHING, 1 3/8 SWAY BAR, BLACK
3	2	3150-F-CLAMP-G	SWAY BAR F STRAP CLAMP, GREASABLE
4	1	7933-171	ARB, ϕ 1 3/8 SOLID, FRONT, DROPPED CROSSMEMBER 60-87 C10
5	8	3153-44.60-40-B	POLY BUSHING, 7/16 STEM MOUNT, ϕ .59 NIPPLE x ϕ 1.25 OD, BLACK
6	8	3107-044U-Y	WASHER, 7/16 USS, GRADE 9, 1.240 OD, .454 ID, .106 THK, YELLOW ZINC
7	2	3140-1420-136	SLEEVE, ϕ 5/8 x 7/16 x 4.25 LONG
8	2	3123-044C8.00C	HEX BOLT, 7/16-14 x 8, GRADE 5, CLEAR ZINC
9	2	3131-044-20Y	LOCKNUT 7/16-20, GRADE 8, NYLON INSERT, YELLOW ZINC
10	8	3157-038S-C	WASHER, 3/8 SAE, ZINC PLATED, 13/32 ID x 13/16 OD x 1/16 THICK,
11	4	3100-038C1.00Y	HEX BOLT, 3/8-16 x 1, GRADE 8, YELLOW ZINC
12	4	3101-038-16C	LOCKNUT 3/8-16, GRADE 5, NYLON INSERT, CLEAR ZINC



DESCRIPTION		FRONT SWAY BAR, ϕ 1 3/8 SOLID, DROPPED CROSSMEMBER, 60-87 C10	
Chris Alston's CHASSISWORKS INC. 8661 YOUNGER CREEK DRIVE SACRAMENTO, CA 95828 (916) 388-0288 FAX 388-0295		PART NO. KPC ARFDCS-22	
		1/13/20	DWG: KPC_ARFDCS-22

NOTES:

- 1 DRILL 3/8 HOLES IN FRAME FOR ANTI-ROLL BAR BRACKETS
2. LOCATE WITH SUSPENSION AT CENTER OF TRAVEL



PARTS LIST

KPC ARFC31-22 - 1-3/8" Front Anti-Roll Bar, '63-87 C10

Qty	Item Number	Description
1	7926-ARFDCS-22	Hardware bag
1	7933-171	1-3/8" front anti-roll bar, 1960-87 C10 with LayArm lower control arms

5726-F22-3.00 - Anti-Roll Bar 1-3/8" Strap Clamp F-slot

4	3100-038C1.00Y	Bolt 3/8-16 x 1" hex head, Grade 8, yellow zinc
4	3101-038-16C	Locknut 3/8-16 nylon insert, clear zinc
8	3107-044U-Y	Washer 3/8" USS flat, Grade 9, yellow zinc
2	3123-04C8.00C	Bolt 7/16-14 x 8" hex head, clear zinc
2	3131-044-14Y	Locknut 7/16-14 nylon insert, clear zinc
2	3140-1420-136	Sleeve 7/16" ID x 5/8" OD x 4-1/4"
2	3150-F-1.38-B	Anti-roll bar D-shaped bushing 1-3/8" large greasable
2	3150-F-CLAMP-G	Anti-roll bar F-strap clamp
1	3151-5ML	Poly lube, 5ml squirt tube
8	3153-44.60-40-B	Poly bushing 7/16" stem mount, 1-1/4" OD
8	3157-038S-C	Washer 3/8" SAE flat

WARRANTY NOTICE:

There are NO WARRANTIES, either expressed or implied. Neither the seller nor manufacturer will be liable for any loss, damage or injury, direct or indirect, arising from the use or inability to determine the appropriate use of any products. Before any attempt at installation, all drawings and/or instruction sheets should be completely reviewed to determine the suitability of the product for its intended use. In this connection, the user assumes all responsibility and risk. We reserve the right to change specification without notice. Further, Chris Alston's Chassisworks, Inc., makes **NO GUARANTEE** in reference to any specific class legality of any component. **ALL PRODUCTS ARE INTENDED FOR RACING AND OFF-ROAD USE AND MAY NOT BE LEGALLY USED ON THE HIGHWAY.** The products offered for sale are true race-car components and, in all cases, require some fabrication skill. **NO PRODUCT OR SERVICE IS DESIGNED OR INTENDED TO PREVENT INJURY OR DEATH.**

KP Components
 A Chris Alston's Chassisworks Inc., Brand
 8661 Younger Creek Drive
 Sacramento, CA 95828
 Technical Support: KPtech@cachassisworks.com

