

READ ALL INSTRUCTIONS COMPLETELY AND THOROUGHLY UNDERSTAND THEM BEFORE DOING ANYTHING.
CALL KP COMPONENTS TECH SUPPORT (916) 388-0288 IF YOU NEED ASSISTANCE.

INSTALLATION GUIDE



KPC LCA-C31-DCB LayArm Air-Bag Lower Control Arms for Dropped Crossmember 1960-1987 Chevrolet C10 Pickup

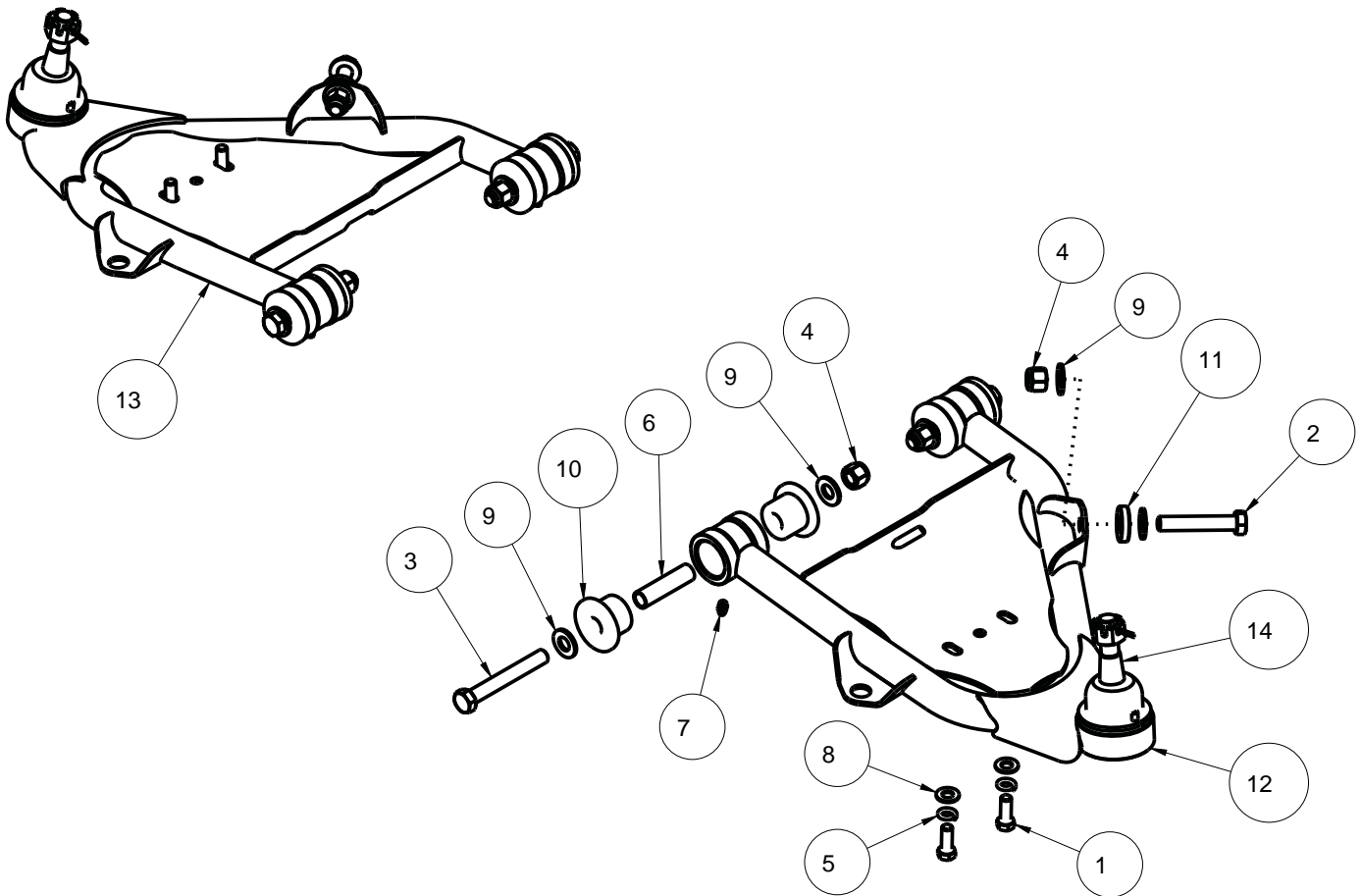


Description:

LayArm air-bag style lower control arms with ball joints for KP dropped crossmember.

----- SPECIAL ORDER PART NOT CANCELABLE OR RETURNABLE FOR ANY REASON -----

ITEM	QTY	PART NO.	DESCRIPTION
1	4	3100-038C1.00Y	HEX BOLT, 3/8-16 x 1, GRADE 8, YELLOW ZINC
2	2	3100-050C2.75Y	HEX BOLT, 1/2-13 x 2 3/4, GRADE 8, YELLOW ZINC
3	4	3100-050C3.75Y	HEX BOLT, 1/2-13 x 3 3/4, GRADE 8, YELLOW ZINC
4	6	3101-050-13C	LOCKNUT 1/2-13, GRADE 5, NYLON INSERT, CLEAR ZINC
5	4	3108-038L-C	LOCK WASHER, HELICAL SPRING ϕ 3/8, STEEL, ZINC
6	4	3140-1620-077	SLEEVE, POLY BUSHING, ϕ 5/8 x 1/2 x 2.406
7	4	3144-25-28-0	GREASE ZERK 1/4-28 STRAIGHT
8	4	3157-038S-C	WASHER, 3/8 SAE, ZINC PLATED, 13/32 ID x 13/16 OD x 1/16 THICK,
9	12	3157-050S-C	WASHER, 1/2 SAE, ZINC PLATED, 1/2 ID x 1 1/16 OD x 3/32 THICK
10	8	3540	POLYURETHANE BUSHING, 1.375 x .625 x .95
11	2	7931-084	SPACER, ϕ 1 1/4 OD x ϕ 1/2 ID x .300 LONG
12	1	7933-110	LOWER CONTROL ARM WELDMNT, DRIVER, 60-87 GM C10 DROPPED CROSSMEMBER
13	1	7933-111	LOWER CONTROL ARM WELDMNT, PSGR, 60-87 GM C10 DROPPED CROSSMEMBER
14	1	KPC BJL-C41	BALLJOINTS, LOWER, 1971-87 CHEVROLET C10



DESCRIPTION		LAYERM, LOWER CONTROL ARM, AIR BAG, DROPPED CROSSMEMBER, 60-87 C10	
Chris Alston's CHASSISWORKS INC. 8661 YOUNGER CREEK DRIVE SACRAMENTO, CA 95828 (916) 388-0288 FAX 388-0295		PART NO. KPC LCAC31-DCB	
		12/19/19	DWG: KPC_LCAC31-DCB

PARTS LIST

KPC LCA-C31-DC - Air-Bag Lower Control Arms for Dropped Crossmember

Qty	Part Number	Description
1	7926-LCAC31DCB	Hardware bag
1	7933-110	Lower control arm weldment, driver side
1	7933-111	Lower control arm weldment, passenger side

7926-LCAC31DCB - Hardware Bag for LayArm Air-Bag Lower Control Arms

Qty	Part Number	Description
4	3100-038C1.00Y	Bolt 3/8-16 x 1" hex head, Grade 8, yellow zinc
2	3100-050C2.75Y	Bolt 1/2-13 x 2-3/4" hex head, Grade 8, yellow zinc
4	3100-050C3.75Y	Bolt 1/2-13 x 3-3/4" hex head, Grade 8, yellow zinc
6	3101-050-13C	Locknut 1/2-13 nylon insert, clear zinc
4	3108-038L-C	Lock washer 3/8" regular, clear zinc
4	3140-1620-077	Sleeve 1/2" ID x 5/8" OD x 2.4" long, yellow zinc
4	3144-25-28-0	Grease zerkl fitting 1/4-28 straight
4	3157-038S-C	Washer 3/8" flat SAE, clear zinc
12	3157-050S-C	Washer 1/2" flat SAE, clear zinc
8	3540	Urethane bushing
2	7931-084	Spacer 1-1/4 x 1/2 x .3", clear zinc

OPTION - Ball Joints

Qty	Part Number	Description
1	KPC BJL-C31	Lower ball joint for 1963-70 C10 spindle (pair)
1	KPC BJL-C41	Lower ball joint for 1971-87 C10 spindle (pair)

INSTRUCTIONS

- Prior to assembling the control arms, verify that the ball joint taper correctly fit the spindle.
- Ball joints can be pressed into the control arm.
- Grease the steel sleeve prior to assembling with urethane bushings.
- SHOCK SPACER - The steel spacer is placed between the control arm mount and shock bushing. (Image to right)



ALIGNMENT SPECS

Caster	Camber	Toe
3 degrees	1/2 degree negative	1/16" IN

WARRANTY NOTICE:

There are NO WARRANTIES, either expressed or implied. Neither the seller nor manufacturer will be liable for any loss, damage or injury, direct or indirect, arising from the use or inability to determine the appropriate use of any products. Before any attempt at installation, all drawings and/or instruction sheets should be completely reviewed to determine the suitability of the product for its intended use. In this connection, the user assumes all responsibility and risk. We reserve the right to change specification without notice. Further, Chris Alston's Chassisworks, Inc., makes **NO GUARANTEE** in reference to any specific class legality of any component. **ALL PRODUCTS ARE INTENDED FOR RACING AND OFF-ROAD USE AND MAY NOT BE LEGALLY USED ON THE HIGHWAY.** The products offered for sale are true race-car components and, in all cases, require some fabrication skill. **NO PRODUCT OR SERVICE IS DESIGNED OR INTENDED TO PREVENT INJURY OR DEATH.**

KP Components
A Chris Alston's Chassisworks Inc., Brand
8661 Younger Creek Drive
Sacramento, CA 95828
Technical Support: KPtech@cachassisworks.com

