

**READ ALL INSTRUCTIONS COMPLETELY AND THOROUGHLY UNDERSTAND THEM BEFORE DOING ANYTHING.
CALL KP COMPONENTS TECH SUPPORT (916) 388-0288 IF YOU NEED ASSISTANCE.**

INSTALLATION GUIDE



KPC RPM-DC

Power Rack Mounting Kit for KP Dropped Crossmember 1960-1987 Chevrolet C10 Pickup

Qty	Part Number	Description
2	3100-050C3.50Y	Bolt 1/2-13 x 3-1/2 hex head, Grade 8, yellow zinc
2	3101-050-13C	Locknut 1/2-13 nylon insert, clear zinc
2	3140-1624-074	Sleeve 1/2" ID x 3/4" OD x 2.3" long
4	3141-2442-1.20	Poly bushing
2	7972-2599	Washer 1.6 x .5 ID x .18" thick

INSTRUCTIONS

- For use with KP Components dropped crossmember rack and pinion.
- Remove existing bushings from rack and pinion if present. Replacement bushings provided.
- Grease the steel sleeve prior to assembling with urethane bushings.

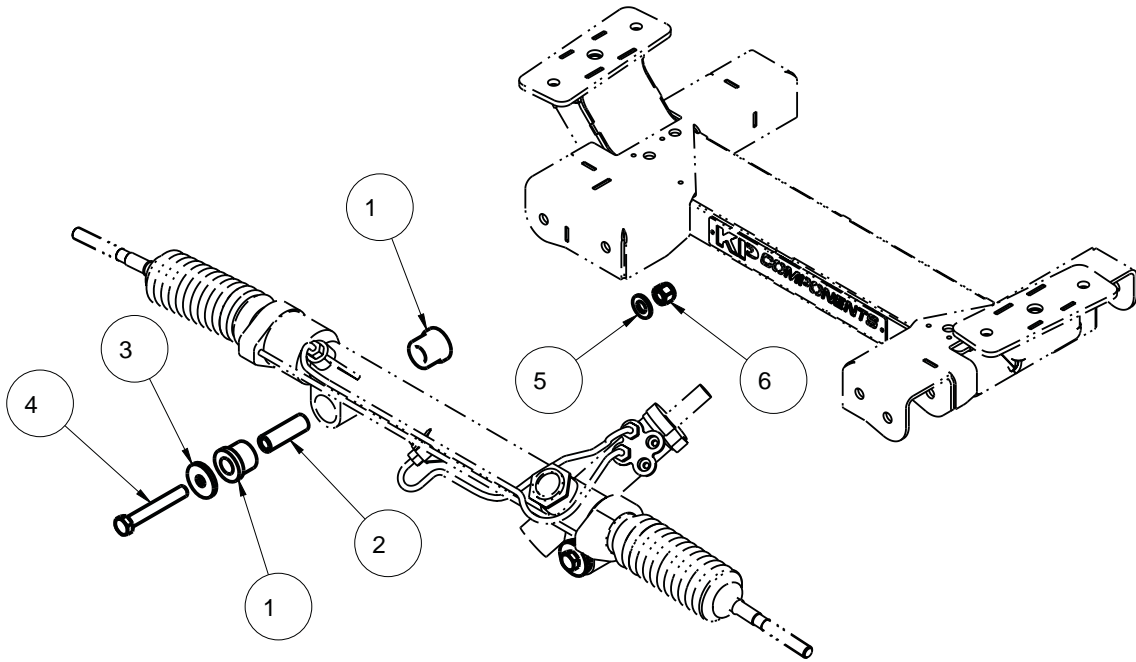
WARRANTY NOTICE:

There are NO WARRANTIES, either expressed or implied. Neither the seller nor manufacturer will be liable for any loss, damage or injury, direct or indirect, arising from the use or inability to determine the appropriate use of any products. Before any attempt at installation, all drawings and/or instruction sheets should be completely reviewed to determine the suitability of the product for its intended use. In this connection, the user assumes all responsibility and risk. We reserve the right to change specification without notice. Further, Chris Alston's Chassisworks, Inc., makes **NO GUARANTEE** in reference to any specific class legality of any component. **ALL PRODUCTS ARE INTENDED FOR RACING AND OFF-ROAD USE AND MAY NOT BE LEGALLY USED ON THE HIGHWAY.** The products offered for sale are true race-car components and, in all cases, require some fabrication skill. **NO PRODUCT OR SERVICE IS DESIGNED OR INTENDED TO PREVENT INJURY OR DEATH.**

KP Components
A Chris Alston's Chassisworks Inc., Brand
8661 Younger Creek Drive
Sacramento, CA 95828
Technical Support: KPtech@cachassisworks.com



ITEM	QTY	PART NO.	DESCRIPTION
1	4	3141-2442-1.20	POLYURETHANE BUSHING 1.503 FLANGE x 1.302 BARREL x .758 BORE
2	2	3140-1624-074	SLEEVE, POLY BUSHING \varnothing 3/4 x 1/2 x 2.313
3	2	7972-2599	WASHER, \varnothing 1.60 x \varnothing 1/2 x .180 THICK
4	2	3100-050C3.50Y	HEX BOLT, 1/2-13 x 3 1/2, GRADE 8, YELLOW ZINC
5	2	3157-050S-C	WASHER, 1/2 SAE, ZINC PLATED, 1/2 ID x 1 1/16 OD x 3/32 THICK
6	2	3101-050-13C	LOCKNUT 1/2-13, GRADE 5, NYLON INSERT, CLEAR ZINC



NOTES:

1. PUMP PRESSURE LINE 9/16-18 PORT
2. RETURN TO RESERVOIR LINE 5/8-18 PORT

DESCRIPTION		POWER RACK MOUNTING KIT, 60-87 GM C10 DROPPED CROSSMEMBER	
Chris Alston's CHASSISWORKS INC. 8661 YOUNGER CREEK DRIVE SACRAMENTO, CA 95828 (916) 388-0288 FAX 388-0295		PART NO. KPC RPM-DC	
		1/30/20	DWG: KPC_RPM-DC