

READ ALL INSTRUCTIONS COMPLETELY AND THOROUGHLY UNDERSTAND THEM BEFORE DOING ANYTHING.
CALL KP COMPONENTS TECH SUPPORT (916) 388-0288 IF YOU NEED ASSISTANCE.

INSTALLATION GUIDE



KPC UCA-C31-DC

LayArm Upper Control Arms for Dropped Crossmember
1960-1987 Chevrolet C10 Pickup

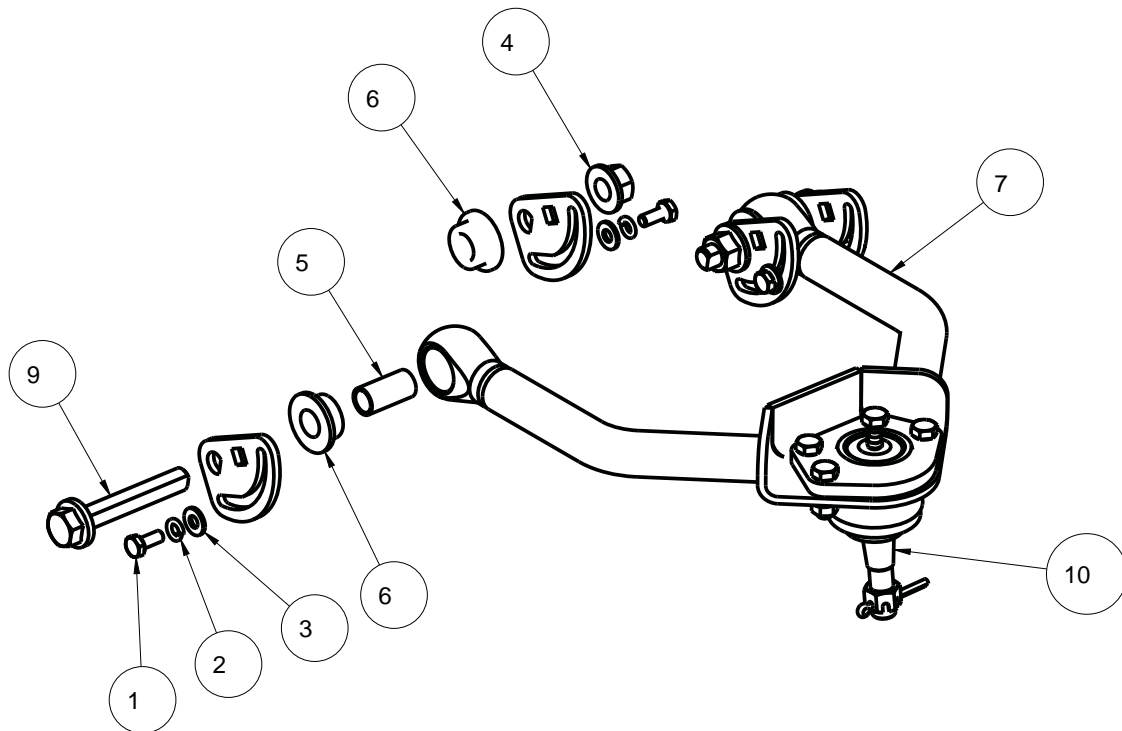


Description:

LayArm upper control arms with ball joints for KP dropped crossmember.

----- SPECIAL ORDER PART NOT CANCELABLE OR RETURNABLE FOR ANY REASON -----

ITEM	QTY	PART NO.	DESCRIPTION
1	4	3100-025F0.63Y	HEX BOLT, 1/4-28 x 5/8, GRADE 8, YELLOW ZINC
2	4	3108-025L-C	LOCK WASHER, HELICAL SPRING \varnothing 1/4, STEEL, ZINC
3	4	3120-025S-Y	FLAT WASHER, 1/4 SAE, HARDENED, YELLOW ZINC
4	2	3132-050-13P	FLANGED TOP LOCKNUT, 1/2-13, GRADE G, PHOSPHATE AND OIL
5	2	3140-1620-040	SLEEVE, POLY BUSHING, \varnothing 5/8 x 1/2 x 1.25
6	4	3533	POLYURETHANE BUSHING 1.0 x .625 x .400
7	1	7933-116	UPPER CONTROL ARM WELDMENT, DRV/PSGR, 60-87 GM C10 DROPPED CROSSMEMBER
8	4	7933-129	ALIGNMENT CAM, UPPER CONTROL ARM, GM C10 DROPPED CROSSMEMBER
9	2	7933-136	CAM BOLT, 1/2-13 x 4, GM C10 DROPMEMBER
10	1	KPC BJU-C51	BALLJOINTS, UPPER, 1973-87 CHEVROLET C10



DESCRIPTION		LAYARM, UPPER CONTROL ARM, DROPPED CROSSMEMBER, 60-87 C10	
Chris Alston's CHASSISWORKS INC. 8661 YOUNGER CREEK DRIVE SACRAMENTO, CA 95828 (916) 388-0288 FAX 388-0295		PART NO. KPC UCAC31-DC	
		12/19/19	DWG: KPC_UCAC31-DC

PARTS LIST

KPC UCA-C31-DC - LayArm Upper Control Arms for Dropped Crossmember

Qty	Part Number	Description
1	7926-UCAC31DC	Hardware bag
2	7933-116	Upper control arm weldment (pair)

7926-UCAC31DC - Hardware Bag for LayArm Upper Control Arms

Qty	Part Number	Description
8	3100-025F0.63Y	Bolt 1/4-28 x 5/8" hex head, Grade 8, yellow zinc
8	3108-025L-C	Lock washer 1/4" regular, clear zinc
8	3120-025S-Y	Washer 1/4" hardened flat SAE, yellow zinc
4	3132-050-13P	Flanged top lock nut 1/2-13
4	3140-1620-040	Sleeve 1/2" ID x 5/8" OD x 1-1/4" long, yellow zinc
8	3533	Urethane bushing
8	7933-129	Alignment cam for C10 dropped crossmember
4	7933-136	Cam bolt 1/2-13 x 4", C10 dropped crossmember upper control arm

OPTION - Ball Joints

Qty	Part Number	Description
1	KPC BJU-C31	Upper ball joint for 1963-70 C10 spindle (pair)
1	KPC BJU-C41	Upper ball joint for 1971-72 C10 spindle (pair)
1	KPC BJU-C51	Upper ball joint for 1973-87 C10 spindle (pair)

INSTRUCTIONS

- Prior to assembling the upper control arms, verify that the ball joint taper correctly fit the spindle.
- Ball joints mount from the top side of the control arm.
- Grease the steel sleeve prior to assembling with urethane bushings.
- Use a 3/8" ratchet or breaker bar to rotate alignment cams.

ALIGNMENT SPECS

Caster	Camber	Toe
3 degrees	1/2 degree negative	1/16" to 1/8" IN

WARRANTY NOTICE:

There are NO WARRANTIES, either expressed or implied. Neither the seller nor manufacturer will be liable for any loss, damage or injury, direct or indirect, arising from the use or inability to determine the appropriate use of any products. Before any attempt at installation, all drawings and/or instruction sheets should be completely reviewed to determine the suitability of the product for its intended use. In this connection, the user assumes all responsibility and risk. We reserve the right to change specification without notice. Further, Chris Alston's Chassisworks, Inc., makes **NO GUARANTEE** in reference to any specific class legality of any component. **ALL PRODUCTS ARE INTENDED FOR RACING AND OFF-ROAD USE AND MAY NOT BE LEGALLY USED ON THE HIGHWAY.** The products offered for sale are true race-car components and, in all cases, require some fabrication skill. **NO PRODUCT OR SERVICE IS DESIGNED OR INTENDED TO PREVENT INJURY OR DEATH.**

KP Components
A Chris Alston's Chassisworks Inc., Brand
8661 Younger Creek Drive
Sacramento, CA 95828
Technical Support: KPtech@cachassisworks.com

