

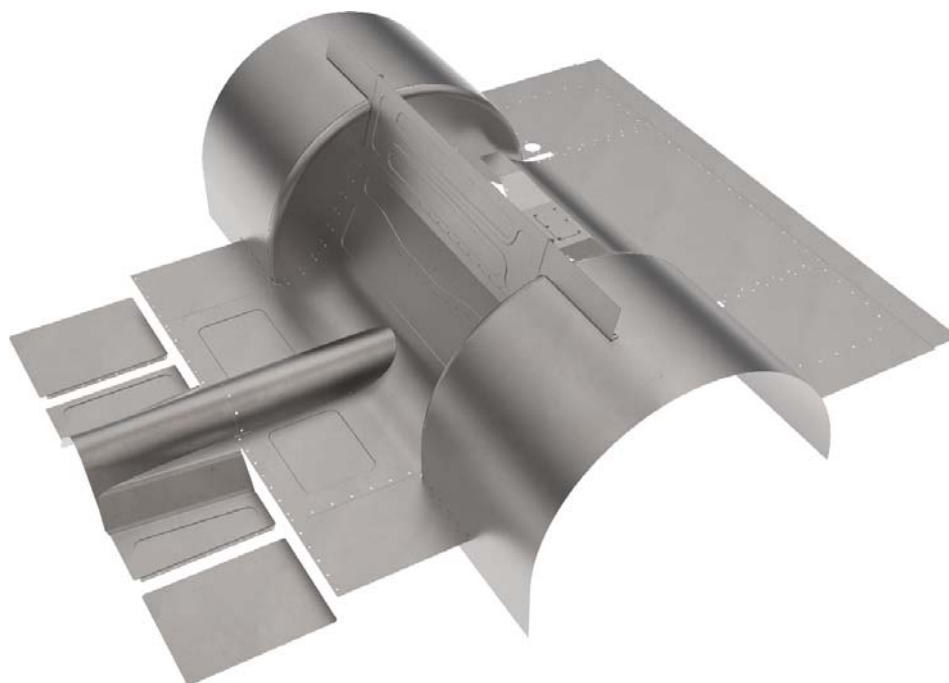
READ ALL INSTRUCTIONS COMPLETELY AND THOROUGHLY UNDERSTAND THEM BEFORE DOING ANYTHING.
CALL CHASSISWORKS TECH SUPPORT (916) 388-0288 IF YOU NEED ASSISTANCE.

INSTALLATION GUIDE



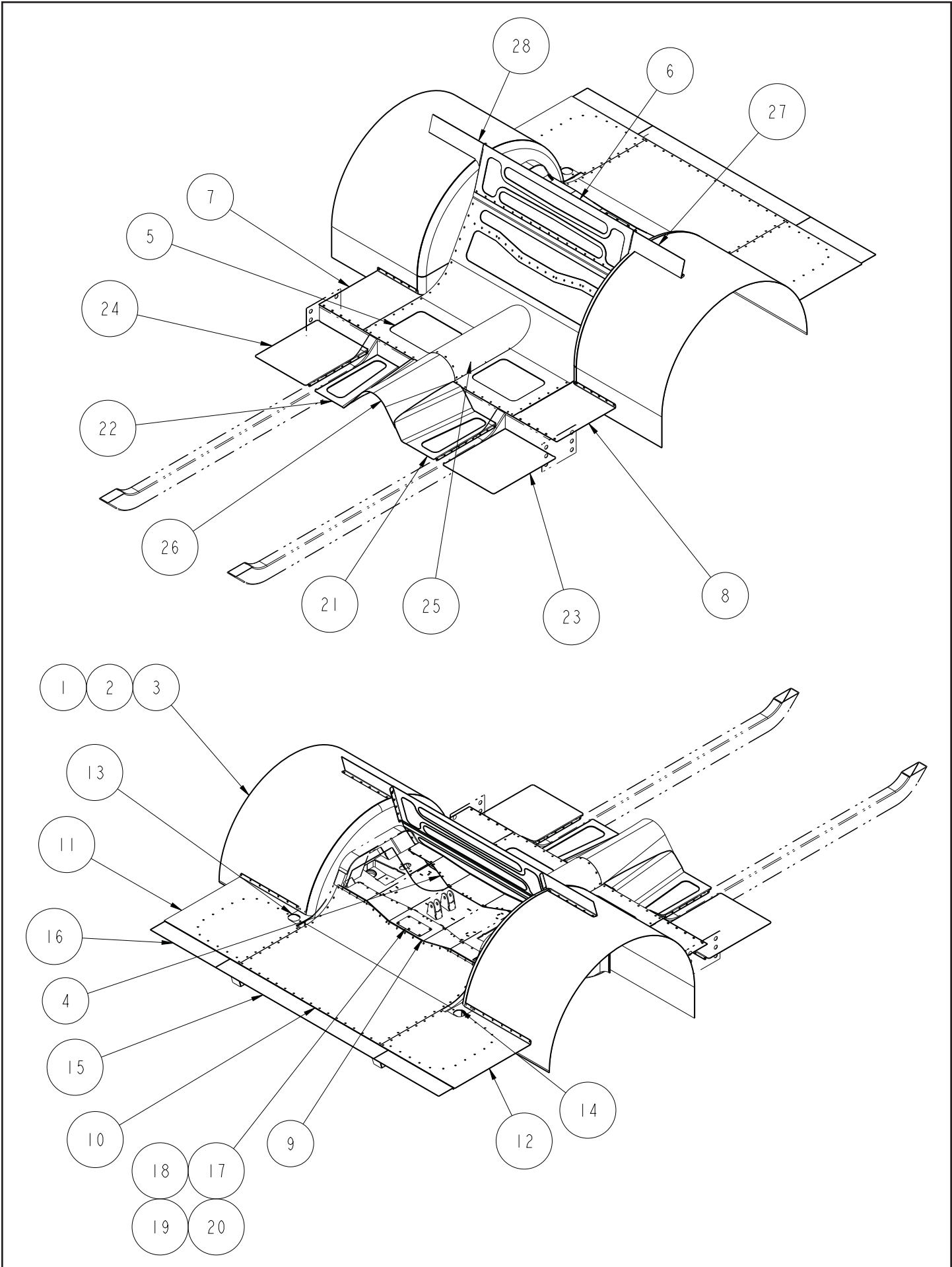
7722-M10R

Rear Floor Kit for '64-70 Mustang IRS



NOTE: Builder Wheel Tubs must be purchased separately.

Description: Rear floor kit for Coil-Over and Rocker-Arm IRS frame clips. Contains complete rear floor to tail light panel with builder tub extensions and rear firewall between tubs. Builder Wheel Tubs must be purchased separately.



ITEM	QTY	PART NO.	DESCRIPTION
1	2	7972-2187	Ø34 WHEEL TUB CAP
2	2	7972-2193	INSERT, WHEEL TUB CORNER
3	2	7972-2191	SKIN, WHEEL TUB, Ø34 x 60 LONG, 3.30 STRAIGHT, 20 WIDE
4	1	7972-2481-35	FILLER PANEL, FRONT, IRS GEN2 CROSSMEMBER, 35 WIDE
5	1	7972-2701-35	REAR FLOOR, AXLE FRONT, S/M GROUND CLEARANCE IRS, M10, 35 WIDE
6	1	7972-2778	BULKHEAD, REAR FIREWALL, S/M GC IRS, M10
7	1	7972-2529	REAR FLOOR FILLER, FRONT AXLE, OUTBOARD PSGR, IRS, M10
8	1	7972-2530	REAR FLOOR FILLER, FRONT AXLE, OUTBOARD DRV, IRS, M10
9	1	7972-2482-35	FILLER PANEL, REAR, IRS GEN2 CROSSMEMBER, 35 WIDE
10	1	7972-2702-35	TRUNK FLOOR, S/M GC IRS, M10, 35 WIDE
11	1	7972-2707	REAR TRUNK FLOOR, DRIVER, S/M GC IRS, M10
12	1	7972-2708	REAR TRUNK FLOOR, PASSENGER, S/M GC IRS, M10
13	1	7972-2709	FILLER, TRUNK, S/M GROUND CLEARANCE IRS, M10, DRIVER
14	1	7972-2710	FILLER, TRUNK, S/M GROUND CLEARANCE IRS, M10 PSGR
15	1	7972-2038	REAR FLOOR FILLER, TRUNK, CENTER, CANTED 4-BAR, F10
16	2	7972-2039	REAR FLOOR FILLER, TRUNK, OUTBOARD, CANTED 4-BAR, F10
17	1	7972-2375	COVER, RESERVOIR POCKET, IRS
18	6	3104-019F0.50S	BUTTON HEAD SOCKET CAP SCREW 10-32 x 1/2, STAINLESS STEEL
19	6	3157-019S-S	WASHER, #10 SAE, STAINLESS, 7/32 ID x .7/16 OD x 3/64 THICK
20	6	3101-019-32S	LOCKNUT 10-32, GRADE 5, STAINLESS STEEL
21	1	7972-2712	FLOOR, REAR SEAT, INBOARD DRIVER, S/M GC IRS, MUSTANG M10
22	1	7972-2713	FLOOR, REAR SEAT, INBOARD PSGR, S/M GC IRS, MUSTANG M10
23	1	7972-2711	FLOOR, REAR SEAT, OUTBOARD DRIVER, S/M GC MUSTANG M10
24	1	7972-2715	FLOOR, REAR SEAT, OUTBOARD PSGR, S/M GC MUSTANG M10
25	1	7972-2703	REAR TUNNEL TERMINATION, S/M GROUND CLEARANCE IRS, M10
26	1	7972-2714	TUNNEL, REAR SEAT, S/M GC IRS, MUSTANG M10
27	1	7972-2655	FILLER PLATE, REAR FIREWALL, DRIVER, CANTED 4-BAR, M10
28	1	7972-2656	FILLER PLATE, REAR FIREWALL, PSGR, CANTED 4-BAR, M10

DESCRIPTION		FLOOR KIT, REAR, STREET MACHINE GROUND CLEARANCE IRS, 64-70 MUSTANG	
<i>Chris Alston's</i> CHASSISWORKS INC. 8661 YOUNGER CREEK DRIVE SACRAMENTO, CA 95828 (916) 388-0288 FAX 388-0295		PART NO.	7722-M10-R
		5/31/19	DWG: 7951-7722M10R

PARTS LIST

7950-7722M10R - Rear Floor Kit

Qty	Part Number	Description
6	3101-019-32S	Locknut, 10/32 stainless, nylon insert
6	3104-019F0.50C	Cap screw, 10/32 x 1/2" button head allen, clear zinc
6	3157-019S--S	Washer, #10 stainless steel
1	7972-2038	Center trunk filler panel
2	7972-2039	Outboard trunk filler panel
2	7972-2193	Wheel tub corner extension
2	7972-2375	Reservoir cover
1	7972-2481-35	Forward frame deck filler panel
1	7972-2482-35	Rear frame deck filler panel
1	7972-2529	Floor fill panel forward of axle, driver side
1	7972-2530	Floor fill panel forward of axle, passenger side
1	7972-2655	Rear firewall filler, driver side
1	7972-2656	Rear firewall filler, passengerside
1	7972-2702-35	Trunk floor center
1	7972-2703	Rear driveshaft tunnel termination
1	7972-2707	Trunk floor, driver side
1	7972-2708	Trunk floor, passenger side
1	7972-2709	Outboard floor fill panel, driver side
1	7972-2710	Outboard floor fill panel, passenger side
1	7972-2711	Rear seat outboard floor, driver side
1	7972-2712	Rear seat inboard floor, driver side
1	7972-2713	Rear seat inboard floor, passenger side
1	7972-2714	Rear seat tunnel
1	7972-2715	Rear seat outboard floor, passenger side
1	7972-2778	Rear firewall panel

INSTRUCTIONS

Cleco Assembly Tabs

Cleco fasteners and pliers make fitting sheet metal pieces together for welding much easier and are highly recommended. Clecos are small, spring-loaded clamps that insert into 1/8" holes to draw multiple panels together. A twenty-five fastener and plier set is available from Chassisworks; Item 6702.

Assembly tabs are included with the transmission tunnel to aid in fitting the tunnel to the floor and firewall. Tabs should be bent, clecoed or tacked as needed.



FITMENT

- Floor and firewall pieces are pre-formed for accurate fit, aligning from the driveshaft tunnel outward.
- Begin by aligning the driveshaft tunnel and adjoining floor sections with the forward edge of the B-pillar crossmember and driveshaft loop. The floor sections must be trimmed flush with outside edge of the frame.
- Outer floor sections just forward of the axle are fit and trimmed to meet the rocker after the wheel tubs have been installed.
- Rear firewall panel must be trimmed flush with the outside edge of the frame. Top edge is bent and trimmed as required to meet the rear deck.
- Outside firewall filler plates are trimmed and fit after the wheel tubs have been installed.
- The four tapered frame deck filler panels are fit against the wheel tub and must be trimmed at the centerline of the rear frame deck.
- Center trunk transition and floor panel can be fit at trimmed along the tail light panel at this time.
- Outside trunk floor panels are fit and trimmed after wheel tubs have been installed.

WELDING

- Use of a heatsink will drastically reduce warpage when welding. A large chunk of aluminum clamped by the welding area makes a simple but effective heatsink. Tack welding every 1/2 to 3/4 of an inch before final welding will also help.

WARRANTY NOTICE:

There are NO WARRANTIES, either expressed or implied. Neither the seller nor manufacturer will be liable for any loss, damage or injury, direct or indirect, arising from the use or inability to determine the appropriate use of any products. Before any attempt at installation, all drawings and/or instruction sheets should be completely reviewed to determine the suitability of the product for its intended use. In this connection, the user assumes all responsibility and risk. We reserve the right to change specification without notice. Further, Chris Alston's Chassisworks, Inc., makes **NO GUARANTEE** in reference to any specific class legality of any component. **ALL PRODUCTS ARE INTENDED FOR RACING AND OFF-ROAD USE AND MAY NOT BE LEGALLY USED ON THE HIGHWAY.** The products offered for sale are true race-car components and, in all cases, require some fabrication skill. **NO PRODUCT OR SERVICE IS DESIGNED OR INTENDED TO PREVENT INJURY OR DEATH.**

Chris Alston's Chassisworks
8661 Younger Creek Drive
Sacramento, CA 95828
Phone: 916-388-0288
Technical Support: sales@cachassisworks.com

